

Datasheet for ABIN462232  
**anti-NPY1R antibody (AA 180-229)**

## 3 Images

[Go to Product page](#)

## Overview

Quantity:	50 µg
Target:	NPY1R
Binding Specificity:	AA 180-229
Reactivity:	Human, Mouse, Rat, Horse, Monkey
Host:	Rabbit
Clonality:	Polyclonal
Conjugate:	This NPY1R antibody is un-conjugated
Application:	Western Blotting (WB), Immunohistochemistry (IHC), Immunohistochemistry (Paraffin-embedded Sections) (IHC (p))

## Product Details

Brand:	IHC-plus™
Immunogen:	Synthetic peptide located between aa180-229 of human NPY1R (P25929, NP_000900). Percent identity by BLAST analysis: Human, Chimpanzee, Gorilla, Gibbon, Monkey, Marmoset (100%), Galago, Sheep, Elephant, Panda, Dog, Bovine, Rabbit, Pig, Guinea pig (92%), Hamster (85%), Mouse, Rat (78%).  Type of Immunogen: Synthetic peptide
Isotype:	IgG
Specificity:	Human NPY1R
Predicted Reactivity:	Percent identity by BLAST analysis: Human (100%) Sheep, Dog, Bovine, Rabbit, Pig, Guinea pig

## Product Details

(92%).

Purification: Immunoaffinity purified

## Target Details

Target: NPY1R

Alternative Name: NPY1R ([NPY1R Products](#))

Background: Name/Gene ID: NPY1R  
Subfamily: Neuropeptide  
Family: GPCR

Synonyms: NPY1R, NPY1, NPY-Y1 receptor, Neuropeptide Y receptor type 1, PY receptor Y1, Neuropeptide Y receptor Y1, Neuropeptide Y-Y1 receptor, Neuropeptide Y1 receptor, NPY1-R, NPYR

Gene ID: 4886

NCBI Accession: [NP\\_000900](#)

UniProt: [P25929](#)

Pathways: [Negative Regulation of Hormone Secretion, Feeding Behaviour](#)

## Application Details

Application Notes: Approved: IHC, IHC-P (5 µg/mL), WB

Usage: Immunohistochemistry: This antibody was validated for use in immunohistochemistry on a panel of 21 formalin-fixed, paraffin-embedded (FFPE) human tissues after heat induced antigen retrieval in pH 6.0 citrate buffer. After incubation with the primary antibody, slides were incubated with biotinylated secondary antibody, followed by alkaline phosphatase-streptavidin and chromogen. The stained slides were evaluated by a pathologist to confirm staining specificity. The optimal working concentration for this antibody was determined to be 5 µg/mL. ELISA titer using peptide based assay: 1:312500. Western Blot: Suggested dilution at 1 µg/mL in 5 % skim milk / PBS buffer, and HRP conjugated anti-Rabbit IgG should be diluted in 1:50000 - 100000 as second antibody.

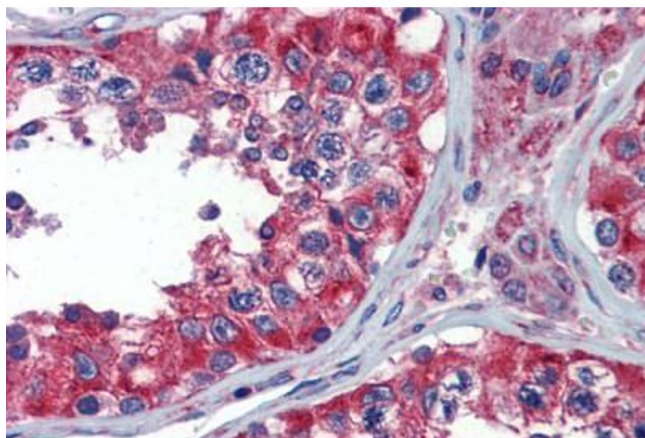
Comment: Target Species of Antibody: Human

Restrictions: For Research Use only

## Handling

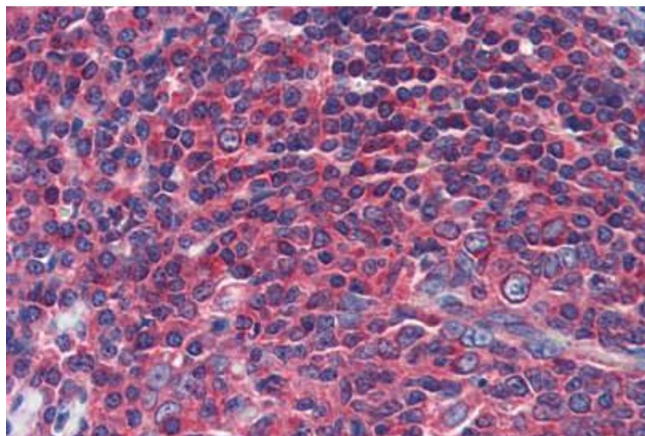
Format:	Lyophilized
Reconstitution:	Distilled Water.
Concentration:	Lot specific
Buffer:	Lyophilized from PBS with 2 % sucrose
Handling Advice:	Avoid repeat freeze-thaw cycles.
Storage:	4 °C,-20 °C
Storage Comment:	Long term: -20°C, the use of 50% glycerol is recommended if storing aliquots in -20°C for long term use (up to 1 year) Short term (less than 1 week): 4°C. Avoid freeze-thaw cycles.

## Images



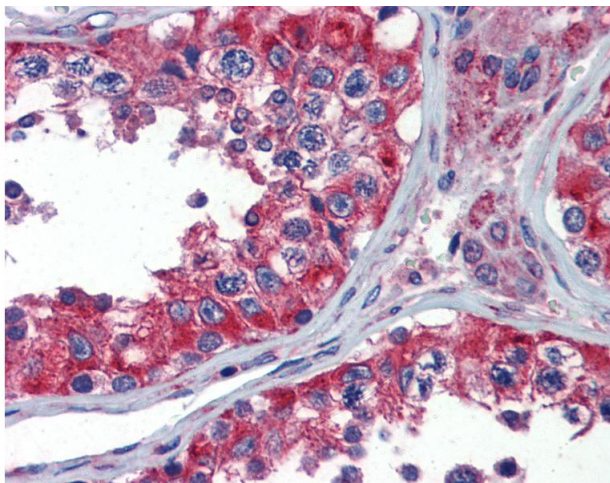
### Immunohistochemistry (Paraffin-embedded Sections)

**Image 1.** Human Testis (formalin-fixed, paraffin-embedded) stained with NPY1R antibody ABIN462232 followed by biotinylated goat anti-rabbit IgG secondary antibody ABIN481713, alkaline phosphatase-streptavidin and chromogen.



### Immunohistochemistry (Paraffin-embedded Sections)

**Image 2.** Human Tonsil (formalin-fixed, paraffin-embedded) stained with NPY1R antibody ABIN462232 followed by biotinylated goat anti-rabbit IgG secondary antibody ABIN481713, alkaline phosphatase-streptavidin and chromogen.



#### Immunohistochemistry

**Image 3.** Anti-NPY1R antibody IHC of human testis. Immunohistochemistry of formalin-fixed, paraffin-embedded tissue after heat-induced antigen retrieval. Antibody concentration 5 ug/ml. This image was taken for the unconjugated form of this product. Other for ...