

Datasheet for ABIN462270 anti-MYL2 antibody (AA 1-166)



[Go to Product page](#)

2 Images

Overview

Quantity:	50 µL
Target:	MYL2
Binding Specificity:	AA 1-166
Reactivity:	Human, Mouse, Rat
Host:	Mouse
Clonality:	Monoclonal
Conjugate:	This MYL2 antibody is un-conjugated
Application:	Western Blotting (WB), ELISA, Immunohistochemistry (IHC), Immunohistochemistry (Paraffin-embedded Sections) (IHC (p))

Product Details

Brand:	IHC-plus™
Immunogen:	Recombinant human MYL2 (1-166aa) purified from E. coli Type of Immunogen: Recombinant protein
Clone:	AT3B2
Isotype:	IgG2b kappa
Specificity:	Human MYL2 (1-166aa)
Purification:	Protein G purified

Target Details

Target:	MYL2
Alternative Name:	MYL2 (MYL2 Products)
Background:	Name/Gene ID: MYL2 Synonyms: MYL2, MLC2, Myosin light chain 2, MLC-2, RLC of myosin, CMH10, MLC-2v
Gene ID:	4633
UniProt:	P10916
Pathways:	Myometrial Relaxation and Contraction

Application Details

Application Notes:	Approved: ELISA, IHC, IHC-P (5 µg/mL), WB (1:1000 - 1:2000) Usage: Immunohistochemistry: This antibody was validated for use in immunohistochemistry on a panel of 21 formalin-fixed, paraffin-embedded (FFPE) human tissues after heat induced antigen retrieval in pH 6.0 citrate buffer. After incubation with the primary antibody, slides were incubated with biotinylated secondary antibody, followed by alkaline phosphatase-streptavidin and chromogen. The stained slides were evaluated by a pathologist to confirm staining specificity. The optimal working concentration for this antibody was determined to be 5 µg/mL. Western Blot: Extracts of Rat heart (60 µg) were resolved by SDS-PAGE, transferred to NC membrane and probed with anti-human MYL2 (1:1000). Proteins were visualized using a goat anti-mouse secondary antibody conjugated to HRP and an ECL detection system.
Comment:	Target Species of Antibody: Human
Restrictions:	For Research Use only

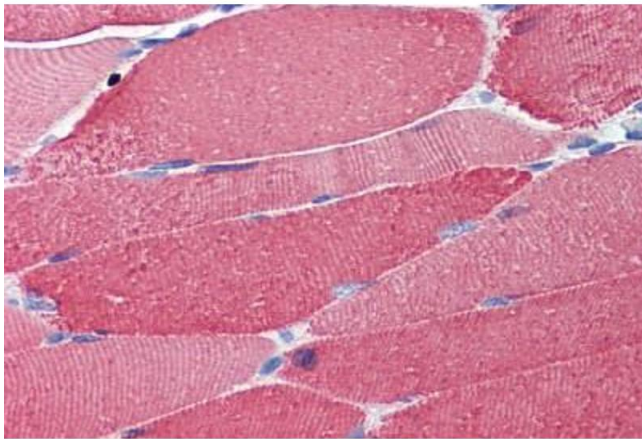
Handling

Format:	Liquid
Concentration:	Lot specific
Buffer:	PBS, pH 7.4, 0.1 % sodium azide
Preservative:	Sodium azide
Precaution of Use:	This product contains Sodium azide: a POISONOUS AND HAZARDOUS SUBSTANCE which should be handled by trained staff only.

Handling

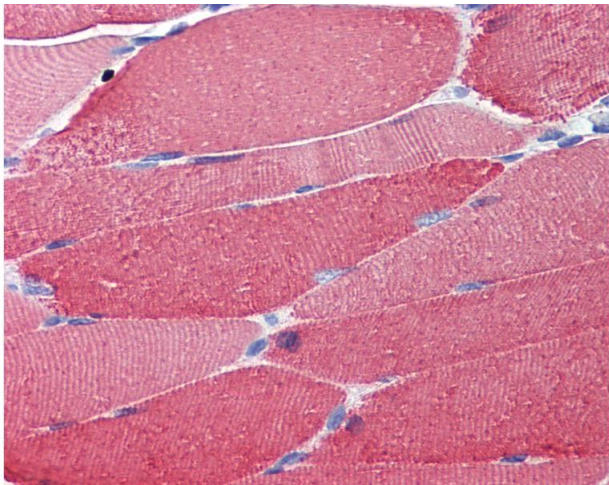
Handling Advice:	Minimize freezing and thawing.
Storage:	-20 °C
Storage Comment:	Aliquot and store at -20°C. Avoid freeze-thaw cycles.

Images



Immunohistochemistry (Paraffin-embedded Sections)

Image 1. Human Skeletal Muscle (formalin-fixed, paraffin-embedded) stained with antibody ABIN462270 followed by biotinylated secondary antibody, alkaline phosphatase-streptavidin and chromogen.



Immunohistochemistry

Image 2. Anti-MYL2 antibody IHC of human skeletal muscle. Immunohistochemistry of formalin-fixed, paraffin-embedded tissue after heat-induced antigen retrieval. Antibody concentration 5 ug/ml.