



[Go to Product page](#)

Datasheet for ABIN462271

## anti-RNH1 antibody (AA 7-461)

### 3 Images

#### Overview

Quantity:	50 µL
Target:	RNH1
Binding Specificity:	AA 7-461
Reactivity:	Human, Mouse
Host:	Mouse
Clonality:	Monoclonal
Conjugate:	This RNH1 antibody is un-conjugated
Application:	Western Blotting (WB), Immunohistochemistry (IHC), ELISA, Immunohistochemistry (Paraffin-embedded Sections) (IHC (p))

#### Product Details

Brand:	IHC-plus™
Immunogen:	Recombinant Ribonuclease inhibitor 1(RNH1) (7-461aa) purified from E. coli Type of Immunogen: Recombinant protein
Clone:	AT1H23
Isotype:	IgG2a kappa
Specificity:	Ribonuclease inhibitor 1(RNH1) (7-461aa)
Purification:	Protein G purified

## Target Details

---

Target:	RNH1
Alternative Name:	RNH1 ( <a href="#">RNH1 Products</a> )
Background:	Name/Gene ID: RNH1  Synonyms: RNH1, Placental RNase inhibitor, PRI, RAI, Ribonuclease inhibitor, RNH
Gene ID:	6050
UniProt:	<a href="#">P13489</a>

## Application Details

---

Application Notes: Approved: ELISA, IHC, IHC-P (5 µg/mL), WB (1:1000 - 1:2000)

Usage: Immunohistochemistry: This antibody was validated for use in immunohistochemistry on a panel of 21 formalin-fixed, paraffin-embedded (FFPE) human tissues after heat induced antigen retrieval in pH 6.0 citrate buffer. After incubation with the primary antibody, slides were incubated with biotinylated secondary antibody, followed by alkaline phosphatase-streptavidin and chromogen. The stained slides were evaluated by a pathologist to confirm staining specificity. The optimal working concentration for this antibody was determined to be 5 µg/mL. Western Blot: Extracts of mouse liver (20 µg) were resolved by SDS-PAGE, transferred to NC membrane and probed with anti-human RNH1 (1:1000). Proteins were visualized using a goat anti-mouse secondary antibody.

Comment: Target Species of Antibody: Human

Restrictions: For Research Use only

## Handling

---

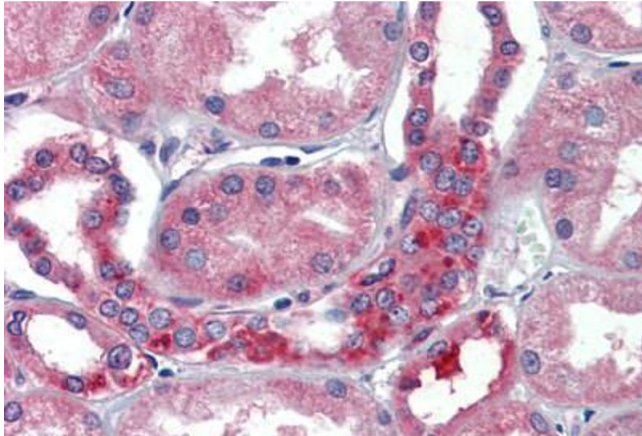
Format:	Liquid
Concentration:	Lot specific
Buffer:	PBS, pH 7.4, 0.1 % sodium azide
Preservative:	Sodium azide
Precaution of Use:	This product contains Sodium azide: a POISONOUS AND HAZARDOUS SUBSTANCE which should be handled by trained staff only.
Handling Advice:	Minimize freezing and thawing.

## Handling

Storage: -20 °C

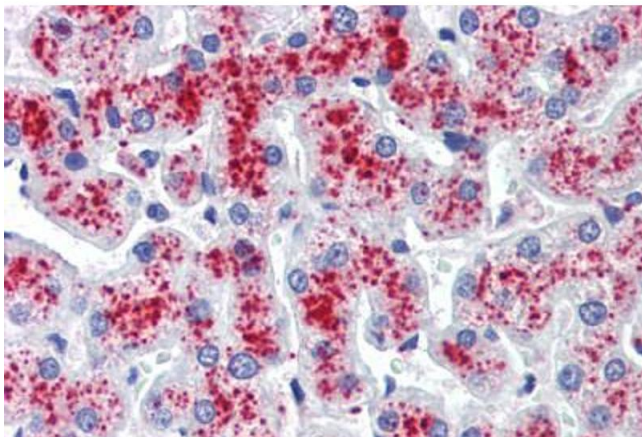
Storage Comment: Aliquot and store at -20°C. Avoid freeze-thaw cycles.

## Images



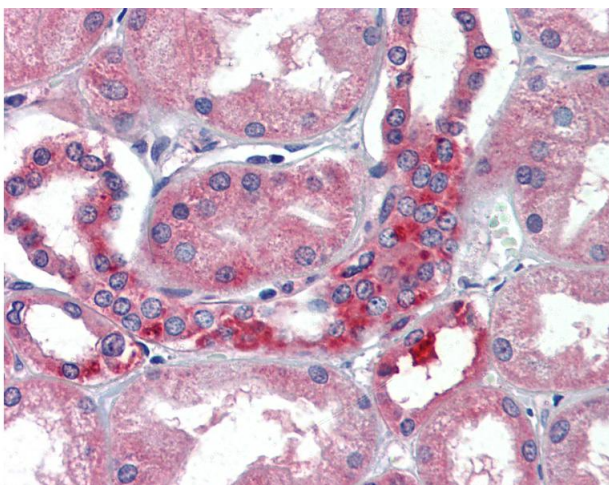
### Immunohistochemistry (Paraffin-embedded Sections)

**Image 1.** Human Kidney (formalin-fixed, paraffin-embedded) stained with antibody ABIN462271 followed by biotinylated secondary antibody, alkaline phosphatase-streptavidin and chromogen.



### Immunohistochemistry (Paraffin-embedded Sections)

**Image 2.** Human Liver (formalin-fixed, paraffin-embedded) stained with antibody ABIN462271 followed by biotinylated secondary antibody, alkaline phosphatase-streptavidin and chromogen.



### Immunohistochemistry

**Image 3.** Anti-RNH1 antibody IHC of human kidney. Immunohistochemistry of formalin-fixed, paraffin-embedded tissue after heat-induced antigen retrieval. Antibody concentration 5 ug/ml.