

Datasheet for ABIN462272
anti-TDP1 antibody (AA 1-298)

3 Images

[Go to Product page](#)

Overview

Quantity:	50 µL
Target:	TDP1
Binding Specificity:	AA 1-298
Reactivity:	Human
Host:	Mouse
Clonality:	Monoclonal
Conjugate:	This TDP1 antibody is un-conjugated
Application:	Western Blotting (WB), ELISA, Immunohistochemistry (IHC), Immunohistochemistry (Paraffin-embedded Sections) (IHC (p))

Product Details

Brand:	IHC-plus™
Immunogen:	Recombinant human TDP1 (1-298aa) purified from E. coli Type of Immunogen: Recombinant protein
Clone:	AT1F2
Isotype:	IgG2b kappa
Specificity:	Human TDP1 (1-298aa)
Purification:	Protein G purified

Target Details

Target:	TDP1
Alternative Name:	TDP1 (TDP1 Products)
Background:	Name/Gene ID: TDP1 Synonyms: TDP1, Tyr-DNA phosphodiesterase 1, SCAN1
Gene ID:	55775
UniProt:	Q9NUW8

Application Details

Application Notes:	Approved: ELISA, IHC, IHC-P (5 µg/mL), WB (1:1000 - 1:2000) Usage: Immunohistochemistry: This antibody was validated for use in immunohistochemistry on a panel of 21 formalin-fixed, paraffin-embedded (FFPE) human tissues after heat induced antigen retrieval in pH 6.0 citrate buffer. After incubation with the primary antibody, slides were incubated with biotinylated secondary antibody, followed by alkaline phosphatase-streptavidin and chromogen. The stained slides were evaluated by a pathologist to confirm staining specificity. The optimal working concentration for this antibody was determined to be 5 µg/mL. Western Blot: Cell lysates of MCF7 (30 µg) were resolved by SDS-PAGE, transferred to NC membrane and probed with anti-human TDP1 (1:1000). Proteins were visualized using a goat anti-mouse secondary antibody conjugated to HRP and an ECL detection system.
Comment:	Target Species of Antibody: Human
Restrictions:	For Research Use only

Handling

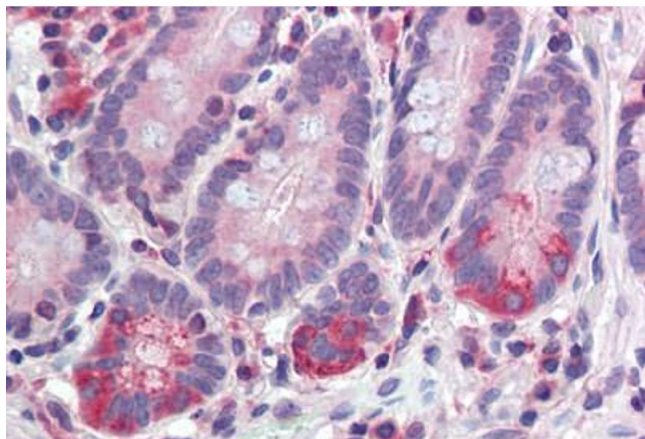
Format:	Liquid
Concentration:	Lot specific
Buffer:	PBS, pH 7.4, 0.1 % sodium azide
Preservative:	Sodium azide
Precaution of Use:	This product contains Sodium azide: a POISONOUS AND HAZARDOUS SUBSTANCE which should be handled by trained staff only.
Handling Advice:	Minimize freezing and thawing.

Handling

Storage: -20 °C

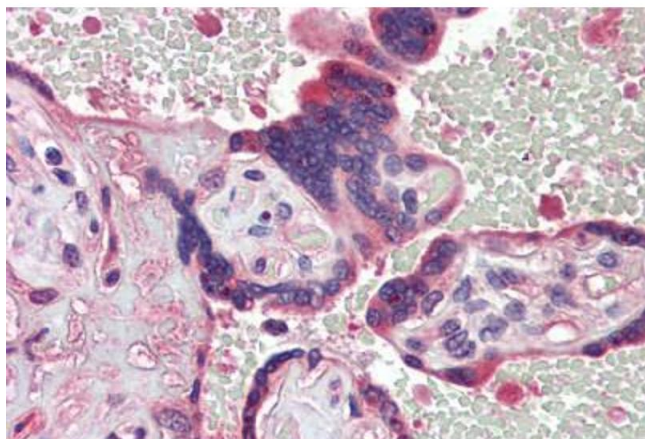
Storage Comment: Aliquot and store at -20°C. Avoid freeze-thaw cycles.

Images



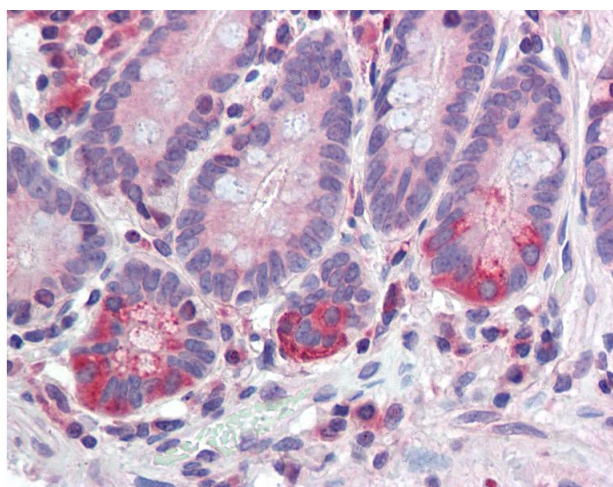
Immunohistochemistry (Paraffin-embedded Sections)

Image 1. Human Small Intestine (formalin-fixed, paraffin-embedded) stained with antibody ABIN462272 followed by biotinylated secondary antibody, alkaline phosphatase-streptavidin and chromogen.



Immunohistochemistry (Paraffin-embedded Sections)

Image 2. Human Placenta (formalin-fixed, paraffin-embedded) stained with antibody ABIN462272 followed by biotinylated secondary antibody, alkaline phosphatase-streptavidin and chromogen.



Immunohistochemistry

Image 3. Anti-TDP1 antibody IHC of human small intestine. Immunohistochemistry of formalin-fixed, paraffin-embedded tissue after heat-induced antigen retrieval. Antibody concentration 5 ug/ml.