



[Go to Product page](#)

Datasheet for ABIN462274

anti-BRCC3 antibody (AA 1-316)

3 Images

Overview

Quantity:	50 µL
Target:	BRCC3
Binding Specificity:	AA 1-316
Reactivity:	Human
Host:	Mouse
Clonality:	Monoclonal
Conjugate:	This BRCC3 antibody is un-conjugated
Application:	Western Blotting (WB), ELISA, Immunohistochemistry (IHC), Immunohistochemistry (Paraffin-embedded Sections) (IHC (p))

Product Details

Brand:	IHC-plus™
Immunogen:	Recombinant BRCC36 (1-316aa) purified from E. coli Type of Immunogen: Recombinant protein
Clone:	AT3B1
Isotype:	IgG1 kappa
Specificity:	BRCC36 (1-316aa)
Purification:	Protein G purified

Target Details

Target:	BRCC3
Alternative Name:	BRCC3 / BRCC36 (BRCC3 Products)
Background:	Name/Gene ID: BRCC3 Synonyms: BRCC3, C6.1A, BRCC36, BRISC complex subunit BRCC36, BRCA1-A complex subunit BRCC36, CXorf53, RP11-143H17.2
Gene ID:	79184
UniProt:	P46736
Pathways:	Positive Regulation of Response to DNA Damage Stimulus

Application Details

Application Notes:	Approved: ELISA, IHC, IHC-P (5 µg/mL), WB (1:1000 - 1:2000) Usage: Immunohistochemistry: This antibody was validated for use in immunohistochemistry on a panel of 21 formalin-fixed, paraffin-embedded (FFPE) human tissues after heat induced antigen retrieval in pH 6.0 citrate buffer. After incubation with the primary antibody, slides were incubated with biotinylated secondary antibody, followed by alkaline phosphatase-streptavidin and chromogen. The stained slides were evaluated by a pathologist to confirm staining specificity. The optimal working concentration for this antibody was determined to be 5 µg/mL. Western Blot: Cell lysates of HeLa(20 µg) were resolved by SDS-PAGE, transferred to NC membrane and probed with anti-human BRCC36 (1:1000). Proteins were visualized using a goat anti-mouse secondary antibody conjugated to HRP and an ECL detection system.
Comment:	Target Species of Antibody: Human
Restrictions:	For Research Use only

Handling

Format:	Liquid
Concentration:	Lot specific
Buffer:	PBS, pH 7.4, 0.1 % sodium azide. Sourced in Ascites.
Preservative:	Sodium azide
Precaution of Use:	This product contains Sodium azide: a POISONOUS AND HAZARDOUS SUBSTANCE which

Handling

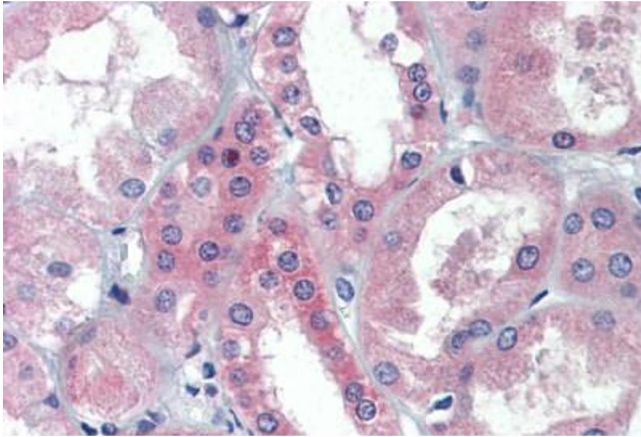
should be handled by trained staff only.

Handling Advice: Minimize freezing and thawing.

Storage: -20 °C

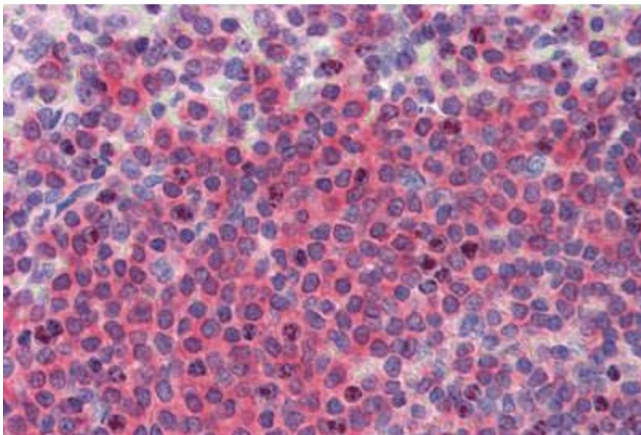
Storage Comment: Aliquot and store at -20°C. Avoid freeze-thaw cycles.

Images



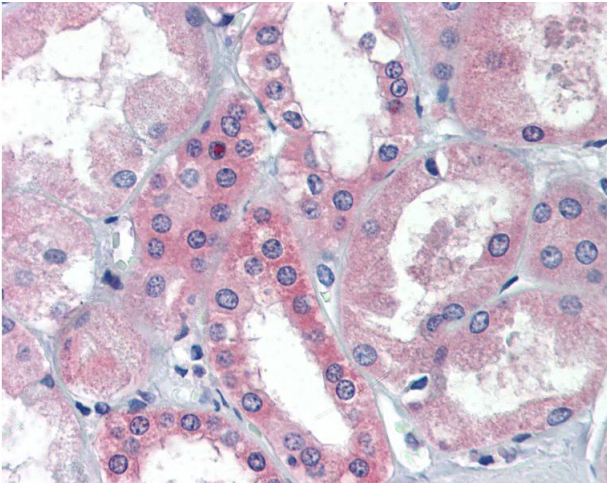
Immunohistochemistry (Paraffin-embedded Sections)

Image 1. Human Kidney (formalin-fixed, paraffin-embedded) stained with antibody ABIN462274 followed by biotinylated secondary antibody, alkaline phosphatase-streptavidin and chromogen.



Immunohistochemistry (Paraffin-embedded Sections)

Image 2. Human Spleen (formalin-fixed, paraffin-embedded) stained with antibody ABIN462274 followed by biotinylated secondary antibody, alkaline phosphatase-streptavidin and chromogen.



Immunohistochemistry

Image 3. Anti-BRCC3 / BRCC36 antibody IHC of human kidney. Immunohistochemistry of formalin-fixed, paraffin-embedded tissue after heat-induced antigen retrieval. Antibody concentration 5 ug/ml.