

Datasheet for ABIN462276
anti-CRABP1 antibody (AA 1-137)

4 Images

[Go to Product page](#)

Overview

Quantity:	50 µL
Target:	CRABP1
Binding Specificity:	AA 1-137
Reactivity:	Human, Mouse
Host:	Mouse
Clonality:	Monoclonal
Conjugate:	This CRABP1 antibody is un-conjugated
Application:	ELISA, Western Blotting (WB), Immunohistochemistry (IHC), Immunohistochemistry (Paraffin-embedded Sections) (IHC (p))

Product Details

Brand:	IHC-plus™
Immunogen:	Recombinant human CRABP1 (1-137aa) purified from E. coli Type of Immunogen: Recombinant protein
Clone:	AT1A1
Isotype:	IgG2b kappa
Specificity:	Human CRABP1 (1-137aa)
Purification:	Protein G purified

Target Details

Target:	CRABP1
Alternative Name:	CRABP1 / CRABP (CRABP1 Products)
Background:	Name/Gene ID: CRABP1 Synonyms: CRABP1, CRABP-I, CRABPI, CRABP
Gene ID:	1381
UniProt:	P29762

Application Details

Application Notes:	Approved: ELISA, IHC, IHC-P (5 µg/mL), WB (1:500 - 1:1000) Usage: Immunohistochemistry: This antibody was validated for use in immunohistochemistry on a panel of 21 formalin-fixed, paraffin-embedded (FFPE) human tissues after heat induced antigen retrieval in pH 6.0 citrate buffer. After incubation with the primary antibody, slides were incubated with biotinylated secondary antibody, followed by alkaline phosphatase-streptavidin and chromogen. The stained slides were evaluated by a pathologist to confirm staining specificity. The optimal working concentration for this antibody was determined to be 5 µg/mL. Western Blot: Extracts of mouse eye (30 µg) were resolved by SDS-PAGE, transferred to NC membrane and probed with anti-human CRABP1 (1:500). Proteins were visualized using a goat anti-mouse secondary antibody conjugated to HRP and an ECL detection system.
Comment:	Target Species of Antibody: Human
Restrictions:	For Research Use only

Handling

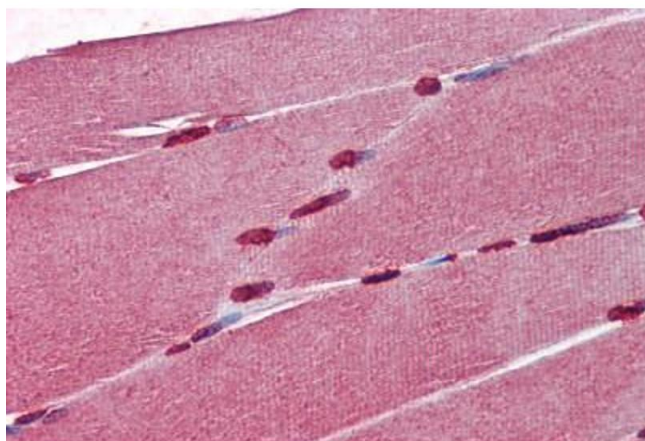
Format:	Liquid
Concentration:	Lot specific
Buffer:	PBS, pH 7.4, 0.1 % sodium azide
Preservative:	Sodium azide
Precaution of Use:	This product contains Sodium azide: a POISONOUS AND HAZARDOUS SUBSTANCE which should be handled by trained staff only.
Handling Advice:	Minimize freezing and thawing.

Handling

Storage: -20 °C

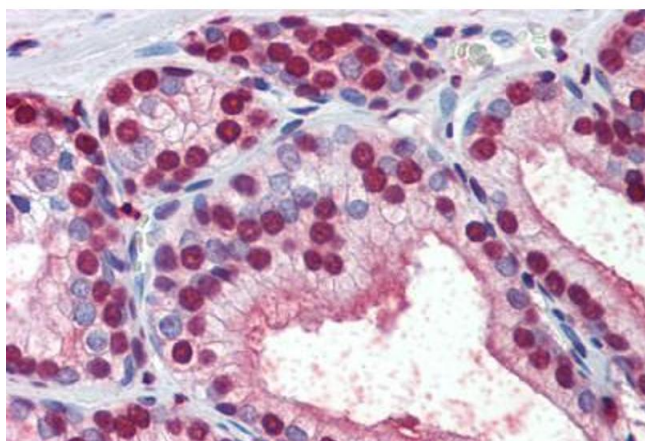
Storage Comment: Aliquot and store at -20°C. Avoid freeze-thaw cycles.

Images



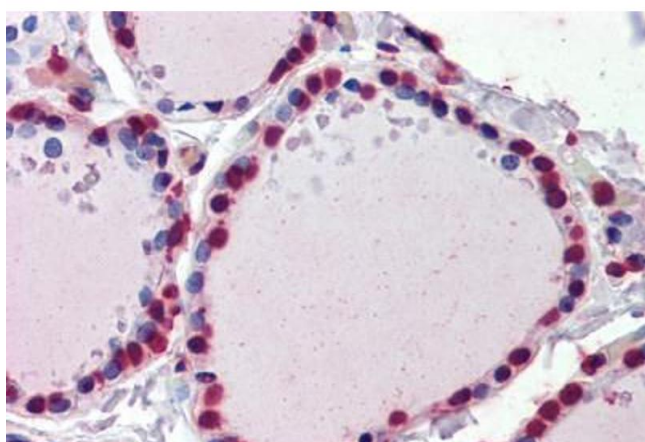
Immunohistochemistry (Paraffin-embedded Sections)

Image 1. Human Skeletal Muscle (formalin-fixed, paraffin-embedded) stained with antibody ABIN462276 followed by biotinylated secondary antibody, alkaline phosphatase-streptavidin and chromogen.



Immunohistochemistry (Paraffin-embedded Sections)

Image 2. Human Prostate (formalin-fixed, paraffin-embedded) stained with antibody ABIN462276 followed by biotinylated secondary antibody, alkaline phosphatase-streptavidin and chromogen.



Immunohistochemistry (Paraffin-embedded Sections)

Image 3. Human Thyroid (formalin-fixed, paraffin-embedded) stained with antibody ABIN462276 followed by biotinylated secondary antibody, alkaline phosphatase-streptavidin and chromogen.

Please check the [product details page](#) for more images. Overall 4 images are available for ABIN462276.