

Datasheet for ABIN462302
anti-DPYSL2 antibody (AA 463-492)[Go to Product page](#)

3 Images

Overview

Quantity:	200 µL
Target:	DPYSL2
Binding Specificity:	AA 463-492
Reactivity:	Human, Mouse
Host:	Mouse
Clonality:	Monoclonal
Conjugate:	This DPYSL2 antibody is un-conjugated
Application:	Western Blotting (WB), Immunohistochemistry (IHC), Immunohistochemistry (Paraffin-embedded Sections) (IHC (p))

Product Details

Brand:	IHC-plus™
Clone:	33CT11-40-3
Isotype:	IgG2b
Specificity:	This DRP-2 antibody is generated from mice immunized with a KLH conjugated synthetic peptide between 463-492 amino acids from human DRP-2.
Purification:	Protein G purified

Target Details

Target:	DPYSL2
---------	--------

Target Details

Alternative Name:	DPYSL2 / CRMP2 (DPYSL2 Products)
Background:	Name/Gene ID: DPYSL2 Synonyms: DPYSL2, CRMP2, CRMP-2, DHPRP2, Dihydropyrimidinase-like 2, DRP-2, N2A3, ULIP2, ULIP-2, Unc-33-like phosphoprotein 2
Gene ID:	1808
UniProt:	Q16555
Pathways:	Regulation of Cell Size

Application Details

Application Notes:	Approved: IHC, IHC-P (1:200), WB (1:2000) Usage: Immunohistochemistry: This antibody was validated for use in immunohistochemistry on a panel of 21 formalin-fixed, paraffin-embedded (FFPE) human tissues after heat induced antigen retrieval in pH 6.0 citrate buffer. After incubation with the primary antibody, slides were incubated with biotinylated secondary antibody, followed by alkaline phosphatase-streptavidin and chromogen. The stained slides were evaluated by a pathologist to confirm staining specificity. The optimal working dilution for LS-B3616 was determined to be 1:200. Please note that we do not recommend the use of mouse antibodies with mouse tissues in IHC due to the likelihood of high background.
Comment:	Target Species of Antibody: Human
Restrictions:	For Research Use only

Handling

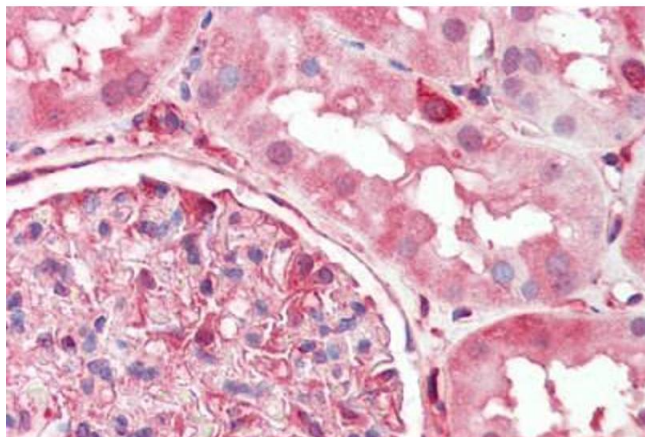
Format:	Liquid
Concentration:	Lot specific
Buffer:	Ascites, 0.9 % sodium azide.
Preservative:	Sodium azide
Precaution of Use:	This product contains Sodium azide: a POISONOUS AND HAZARDOUS SUBSTANCE which should be handled by trained staff only.
Storage:	4 °C, -20 °C

Handling

Storage Comment: Maintain refrigerated at 2-8°C for up to 6 months. For long term storage store at -20°C in small aliquots to prevent freeze-thaw cycles.

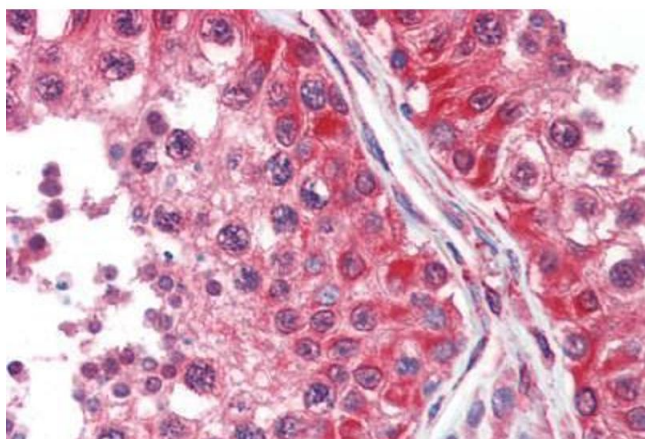
Expiry Date: 6 months

Images



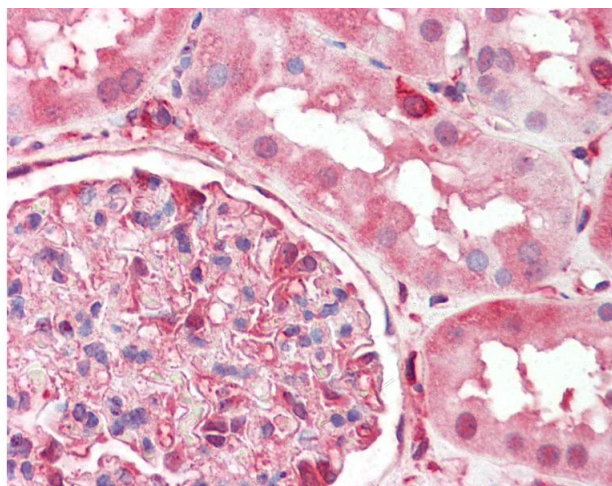
Immunohistochemistry (Paraffin-embedded Sections)

Image 1. Human Kidney (formalin-fixed, paraffin-embedded) stained with DPYSL2 antibody ABIN462302 followed by biotinylated anti-mouse IgG secondary antibody ABIN481714, alkaline phosphatase-streptavidin and chromogen.



Immunohistochemistry (Paraffin-embedded Sections)

Image 2. Human Testis (formalin-fixed, paraffin-embedded) stained with DPYSL2 antibody ABIN462302 followed by biotinylated anti-mouse IgG secondary antibody ABIN481714, alkaline phosphatase-streptavidin and chromogen.



Immunohistochemistry

Image 3. Anti-CRMP-2 antibody IHC of human kidney. Immunohistochemistry of formalin-fixed, paraffin-embedded tissue after heat-induced antigen retrieval. Antibody dilution 1:200.