

Datasheet for ABIN462314
anti-MCAM antibody (Tyr641)



[Go to Product page](#)

2 Images

Overview

Quantity:	50 µg
Target:	MCAM
Binding Specificity:	Tyr641
Reactivity:	Human
Host:	Rabbit
Clonality:	Polyclonal
Conjugate:	This MCAM antibody is un-conjugated
Application:	Immunohistochemistry (IHC), Western Blotting (WB), Immunohistochemistry (Paraffin-embedded Sections) (IHC (p))

Product Details

Brand:	IHC-plus™
Immunogen:	KLH conjugated synthetic peptide corresponding to amino acid residues surrounding Y641 of human MCAM. Type of Immunogen: Synthetic peptide
Purification:	Immunoaffinity purified

Target Details

Target:	MCAM
Alternative Name:	MCAM / CD146 (MCAM Products)

Target Details

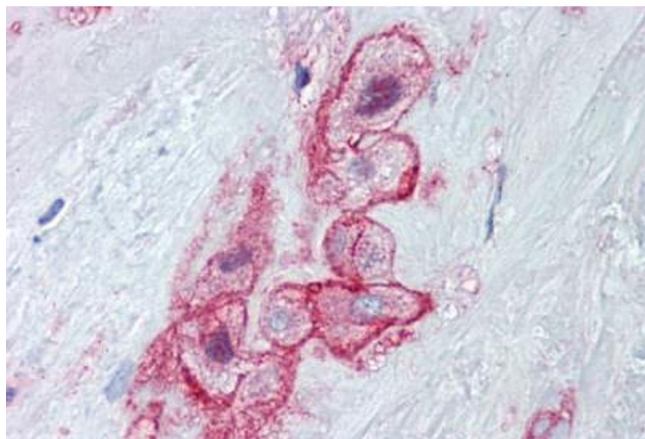
Background:	Name/Gene ID: MCAM Family: Immunoglobulin Synonyms: MCAM, CD146, CD146 antigen, Gicerin, Melanoma adhesion molecule, MUC18, p1h12
Gene ID:	4162
UniProt:	P43121

Application Details

Application Notes:	Approved: IHC, IHC-P (10 µg/mL), WB (1:1000) Usage: Immunohistochemistry: This antibody was validated for use in immunohistochemistry on a panel of 21 formalin-fixed, paraffin-embedded (FFPE) human tissues after heat induced antigen retrieval in pH 6.0 citrate buffer. After incubation with the primary antibody, slides were incubated with biotinylated secondary antibody, followed by alkaline phosphatase-streptavidin and chromogen. The stained slides were evaluated by a pathologist to confirm staining specificity. The optimal working concentration for this antibody was determined to be 10 µg/mL.
Comment:	Target Species of Antibody: Human
Restrictions:	For Research Use only

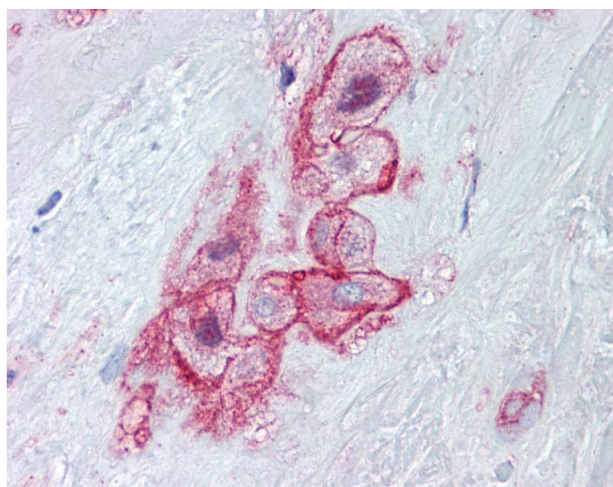
Handling

Format:	Liquid
Concentration:	Lot specific
Buffer:	PBS, 0.09 % sodium azide
Preservative:	Sodium azide
Precaution of Use:	This product contains Sodium azide: a POISONOUS AND HAZARDOUS SUBSTANCE which should be handled by trained staff only.
Storage:	4 °C,-20 °C
Storage Comment:	Maintain refrigerated at 2-8°C for up to 6 months. For long term storage store at -20°C.
Expiry Date:	6 months



Immunohistochemistry (Paraffin-embedded Sections)

Image 1. Human Placenta (formalin-fixed, paraffin-embedded) stained with MCAM antibody ABIN462314 followed by biotinylated goat anti-rabbit IgG secondary antibody ABIN481713, alkaline phosphatase-streptavidin and chromogen.



Immunohistochemistry

Image 2. Anti-MCAM / CD146 antibody IHC staining of human placenta. Immunohistochemistry of formalin-fixed, paraffin-embedded tissue after heat-induced antigen retrieval. Antibody concentration 10 ug/ml.