

Datasheet for ABIN462315
anti-MEF2C antibody (Ser396)

3 Images

[Go to Product page](#)

Overview

Quantity:	50 µg
Target:	MEF2C
Binding Specificity:	Ser396
Reactivity:	Human
Host:	Rabbit
Clonality:	Polyclonal
Conjugate:	This MEF2C antibody is un-conjugated
Application:	Western Blotting (WB), Immunohistochemistry (IHC), Immunohistochemistry (Paraffin-embedded Sections) (IHC (p))

Product Details

Brand:	IHC-plus™
Specificity:	This MEF2C antibody is generated from rabbits immunized with a KLH conjugated synthetic peptide between 374-403 amino acids from human MEF2C.
Purification:	Protein A purified

Target Details

Target:	MEF2C
Alternative Name:	MEF2C (MEF2C Products)
Background:	Name/Gene ID: MEF2C

Target Details

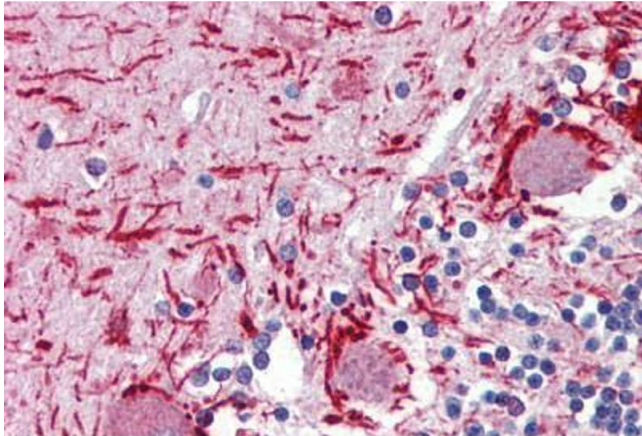
	Synonyms: MEF2C, C5DELq14.3, DEL5q14.3, Myocyte enhancer factor 2C
Gene ID:	4208
UniProt:	Q06413
Pathways:	Neurotrophin Signaling Pathway , Activation of Innate immune Response , Cellular Response to Molecule of Bacterial Origin , Carbohydrate Homeostasis , Chromatin Binding , Regulation of Muscle Cell Differentiation , Skeletal Muscle Fiber Development , Toll-Like Receptors Cascades , BCR Signaling

Application Details

Application Notes:	Approved: IHC, IHC-P (10 µg/mL), WB (1:50 - 1:100) Usage: Immunohistochemistry: This antibody was validated for use in immunohistochemistry on a panel of 21 formalin-fixed, paraffin-embedded (FFPE) human tissues after heat induced antigen retrieval in pH 6.0 citrate buffer. After incubation with the primary antibody, slides were incubated with biotinylated secondary antibody, followed by alkaline phosphatase-streptavidin and chromogen. The stained slides were evaluated by a pathologist to confirm staining specificity. The optimal working concentration for this antibody was determined to be 10 µg/mL.
Comment:	Target Species of Antibody: Human
Restrictions:	For Research Use only

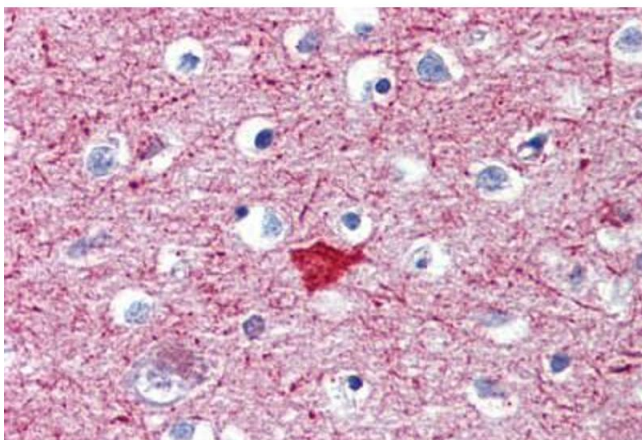
Handling

Format:	Liquid
Concentration:	Lot specific
Buffer:	PBS, 0.09 % sodium azide
Preservative:	Sodium azide
Precaution of Use:	This product contains Sodium azide: a POISONOUS AND HAZARDOUS SUBSTANCE which should be handled by trained staff only.
Storage:	4 °C,-20 °C
Storage Comment:	Maintain refrigerated at 2-8°C for up to 6 months. For long term storage store at -20°C.
Expiry Date:	6 months



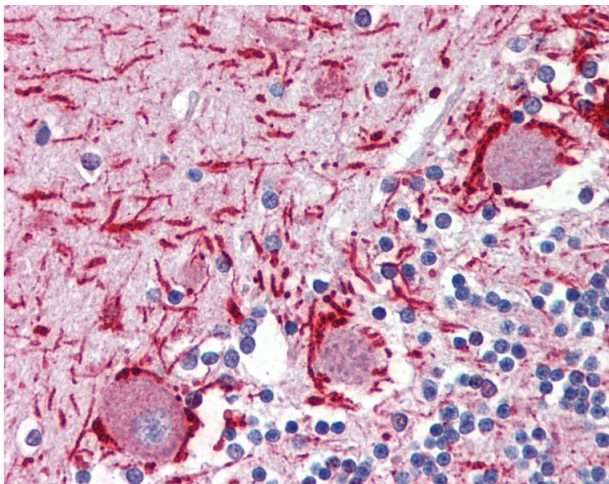
Immunohistochemistry (Paraffin-embedded Sections)

Image 1. Human Brain, Cerebellum (formalin-fixed, paraffin-embedded) stained with MEF2C antibody ABIN462315 followed by biotinylated goat anti-rabbit IgG secondary antibody ABIN481713, alkaline phosphatase-streptavidin and chromogen.



Immunohistochemistry (Paraffin-embedded Sections)

Image 2. Human Brain, Cortex (formalin-fixed, paraffin-embedded) stained with MEF2C antibody ABIN462315 followed by biotinylated goat anti-rabbit IgG secondary antibody ABIN481713, alkaline phosphatase-streptavidin and chromogen.



Immunohistochemistry

Image 3. Anti-MEF2C antibody IHC of human brain, cerebellum. Immunohistochemistry of formalin-fixed, paraffin-embedded tissue after heat-induced antigen retrieval. Antibody concentration 10 ug/ml.