

Datasheet for ABIN462321  
**anti-Elf4 antibody (AA 211-237)**[Go to Product page](#)

## 3 Images

## Overview

Quantity:	200 µL
Target:	Elf4
Binding Specificity:	AA 211-237
Reactivity:	Human
Host:	Rabbit
Clonality:	Polyclonal
Conjugate:	This Elf4 antibody is un-conjugated
Application:	Western Blotting (WB), Immunohistochemistry (IHC), Flow Cytometry (FACS), Immunohistochemistry (Paraffin-embedded Sections) (IHC (p))

## Product Details

Brand:	IHC-plus™
Specificity:	This ELF4 antibody is generated from rabbits immunized with a KLH conjugated synthetic peptide between 211-237 amino acids from the Central region of human ELF4.
Purification:	Ammonium sulfate precipitation

## Target Details

Target:	Elf4
Alternative Name:	ELF4 / MEF ( <a href="#">Elf4 Products</a> )
Background:	Name/Gene ID: ELF4

## Target Details

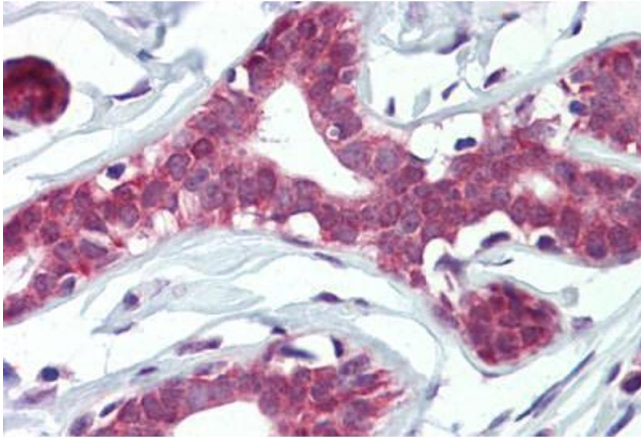
	Synonyms: ELF4, E74-like factor 4, ELFR, MEF, Myeloid Elf-1-like factor
Gene ID:	2000
UniProt:	<a href="#">Q99607</a>
Pathways:	<a href="#">Positive Regulation of Endopeptidase Activity</a>

## Application Details

Application Notes:	Approved: Flo (1:10 - 1:50), IHC, IHC-P (10 µg/mL), WB (1:1000)  Usage: Immunohistochemistry: This antibody was validated for use in immunohistochemistry on a panel of 21 formalin-fixed, paraffin-embedded (FFPE) human tissues after heat induced antigen retrieval in pH 6.0 citrate buffer. After incubation with the primary antibody, slides were incubated with biotinylated secondary antibody, followed by alkaline phosphatase-streptavidin and chromogen. The stained slides were evaluated by a pathologist to confirm staining specificity. The optimal working concentration for this antibody was determined to be 10 µg/mL.
Comment:	Target Species of Antibody: Human
Restrictions:	For Research Use only

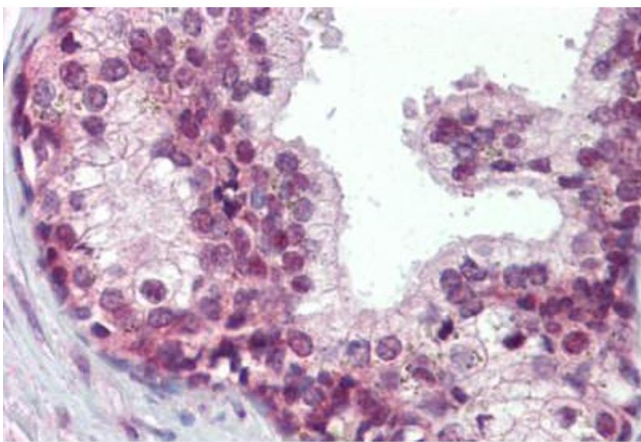
## Handling

Format:	Liquid
Concentration:	Lot specific
Buffer:	PBS, 0.09 % sodium azide
Preservative:	Sodium azide
Precaution of Use:	This product contains Sodium azide: a POISONOUS AND HAZARDOUS SUBSTANCE which should be handled by trained staff only.
Storage:	4 °C,-20 °C
Storage Comment:	Maintain refrigerated at 2-8°C for up to 6 months. For long term storage store at -20°C.
Expiry Date:	6 months



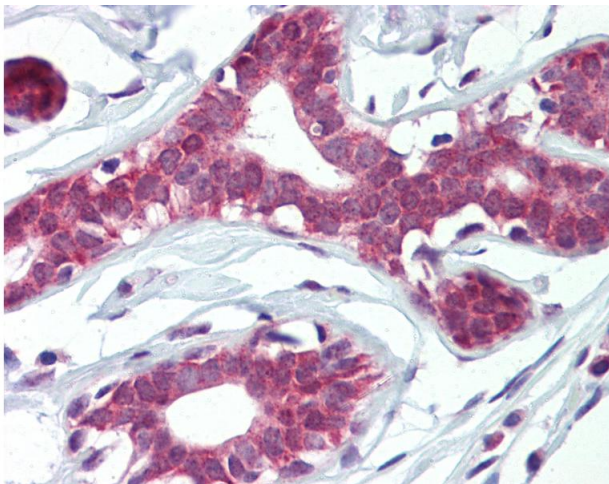
#### Immunohistochemistry (Paraffin-embedded Sections)

**Image 1.** Human Breast (formalin-fixed, paraffin-embedded) stained with ELF4 antibody ABIN462321 followed by biotinylated goat anti-rabbit IgG secondary antibody ABIN481713, alkaline phosphatase-streptavidin and chromogen.



#### Immunohistochemistry (Paraffin-embedded Sections)

**Image 2.** Human Prostate (formalin-fixed, paraffin-embedded) stained with ELF4 antibody ABIN462321 followed by biotinylated goat anti-rabbit IgG secondary antibody ABIN481713, alkaline phosphatase-streptavidin and chromogen.



#### Immunohistochemistry

**Image 3.** Anti-ELF4 antibody IHC of human breast. Immunohistochemistry of formalin-fixed, paraffin-embedded tissue after heat-induced antigen retrieval. Antibody concentration 10 ug/ml.