

Datasheet for ABIN462352

**anti-ALPL antibody****3** Images[Go to Product page](#)

## Overview

Quantity:	50 µg
Target:	ALPL
Reactivity:	Human, Cow
Host:	Mouse
Clonality:	Monoclonal
Conjugate:	This ALPL antibody is un-conjugated
Application:	Western Blotting (WB), ELISA, Immunohistochemistry (IHC), Immunohistochemistry (Paraffin-embedded Sections) (IHC (p))

## Product Details

Brand:	IHC-plus™
Immunogen:	Purified alkaline phosphatase (native) from human bone. Type of Immunogen: Purified protein
Isotype:	IgG1
Specificity:	Recognizes Alkaline Phosphatase from human bone. Species cross-reactivity: Alkaline phosphatase from human placenta and calf intestine.
Purification:	Protein A purified

## Target Details

Target:	ALPL
---------	------

## Target Details

Alternative Name:	ALPL / Alkaline Phosphatase ( <a href="#">ALPL Products</a> )
Background:	Name/Gene ID: ALPL  Synonyms: ALPL, Alkaline phosphomonoesterase, AP-TNAP, Alkaline phosphatase liver, APTNAP, Glycerophosphatase, Tissue-nonspecific ALP, TNAP, HOPS, Liver alkaline phosphatase, TNSALP
Gene ID:	249
UniProt:	<a href="#">P05186</a>

## Application Details

Application Notes:	Approved: ELISA, IHC, IHC-P (10 µg/mL), WB  Usage: Immunohistochemistry: This antibody was validated for use in immunohistochemistry on a panel of 21 formalin-fixed, paraffin-embedded (FFPE) human tissues after heat induced antigen retrieval in pH 6.0 citrate buffer. After incubation with the primary antibody, slides were incubated with biotinylated secondary antibody, followed by alkaline phosphatase-streptavidin and chromogen. The stained slides were evaluated by a pathologist to confirm staining specificity. The optimal working concentration for this antibody was determined to be 10 µg/mL. Suitable for use in ELISA and Western Blot. Western Blot: Stains a band of bone AP at ~90kD.
Comment:	Target Species of Antibody: Human
Restrictions:	For Research Use only

## Handling

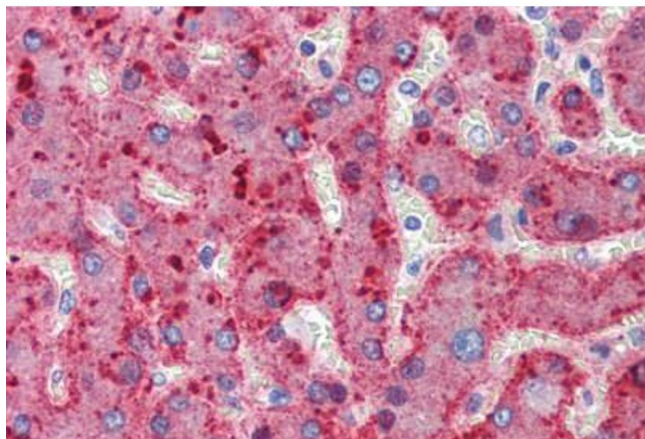
Format:	Liquid
Concentration:	Lot specific
Buffer:	PBS, pH 7.2, 0.09 % sodium azide
Preservative:	Sodium azide
Precaution of Use:	This product contains Sodium azide: a POISONOUS AND HAZARDOUS SUBSTANCE which should be handled by trained staff only.
Handling Advice:	Avoid repeat freeze-thaw cycles.

## Handling

Storage: 4 °C, -20 °C

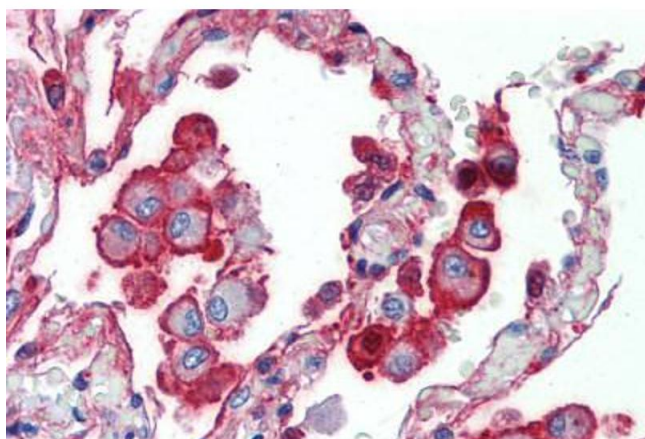
Storage Comment: Short term: 4°C. Long term: Store at -20°C. Avoid freeze-thaw cycles.

## Images



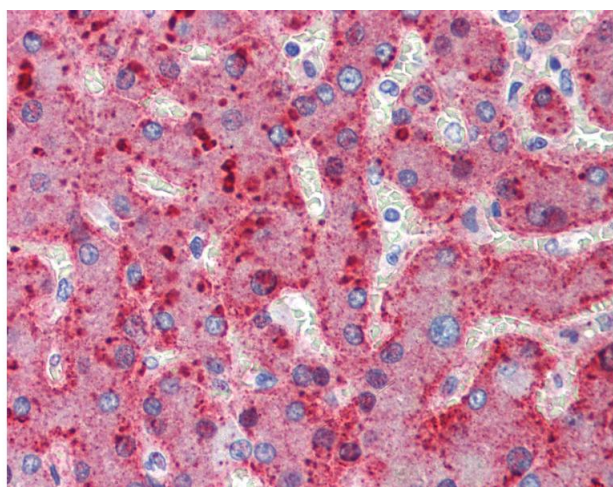
### Immunohistochemistry (Paraffin-embedded Sections)

**Image 1.** Human Liver (formalin-fixed, paraffin-embedded) stained with ALPL antibody ABIN462352 followed by biotinylated anti-mouse IgG secondary antibody ABIN481714, alkaline phosphatase-streptavidin and chromogen.



### Immunohistochemistry (Paraffin-embedded Sections)

**Image 2.** Human Lung (formalin-fixed, paraffin-embedded) stained with ALPL antibody ABIN462352 followed by biotinylated anti-mouse IgG secondary antibody ABIN481714, alkaline phosphatase-streptavidin and chromogen.



### Immunohistochemistry

**Image 3.** Anti-Bone Alkaline Phosphatase antibody IHC of human liver. Immunohistochemistry of formalin-fixed, paraffin-embedded tissue after heat-induced antigen retrieval. Antibody concentration 10 ug/ml.