

Datasheet for ABIN462356  
**anti-Caspase 7 antibody**

## 4 Images

[Go to Product page](#)

## Overview

Quantity:	50 µg
Target:	Caspase 7 (CASP7)
Reactivity:	Human, Mouse, Rat, Monkey, Pig, Dog, Hamster, Rabbit, Sheep
Host:	Mouse
Clonality:	Monoclonal
Conjugate:	This Caspase 7 antibody is un-conjugated
Application:	Western Blotting (WB), Immunohistochemistry (IHC), Immunohistochemistry (Paraffin-embedded Sections) (IHC (p))

## Product Details

Brand:	IHC-plus™
Immunogen:	Recombinant human caspase-7 full length protein.  Type of Immunogen: Recombinant protein
Clone:	7-1-11
Isotype:	IgG
Specificity:	Detects an ~37 kD protein, corresponding to the apparent molecular mass of the caspase-7 on SDS-PAGE immunoblots, in samples from human, mouse, rat, monkey, dog, sheep, rabbit, pig and hamster origins. This antibody recognizes the unprocessed pro-caspase-7 (p35), caspase-7 lacking the short amino- terminal pro domain (32 kD) and the fully processed caspase-7 (p19) in apoptotic cell extracts.

## Product Details

Purification: Protein G purified

## Target Details

Target: Caspase 7 (CASP7)

Alternative Name: CASP7 / Caspase 7 ([CASP7 Products](#))

Background: Name/Gene ID: CASP7  
Subfamily: Cysteine C14  
Family: Protease

Synonyms: CASP7, Apoptotic protease Mch-3, Caspase 7, Caspase-7, ICE-LAP3, LICE2, MCH3, ICE-like apoptotic protease 3, CASP-7, CMH-1

Gene ID: 840

UniProt: [P55210](#)

Pathways: [Apoptosis](#), [Caspase Cascade in Apoptosis](#), [Positive Regulation of Endopeptidase Activity](#)

## Application Details

Application Notes: Approved: IHC, IHC-P (10 µg/mL), WB

Usage: Immunohistochemistry: This antibody was validated for use in immunohistochemistry on a panel of 21 formalin-fixed, paraffin-embedded (FFPE) human tissues after heat induced antigen retrieval in pH 6.0 citrate buffer. After incubation with the primary antibody, slides were incubated with biotinylated secondary antibody, followed by alkaline phosphatase-streptavidin and chromogen. The stained slides were evaluated by a pathologist to confirm staining specificity. The optimal working concentration for this antibody was determined to be 10 µg/mL.

Comment: Target Species of Antibody: Human

Restrictions: For Research Use only

## Handling

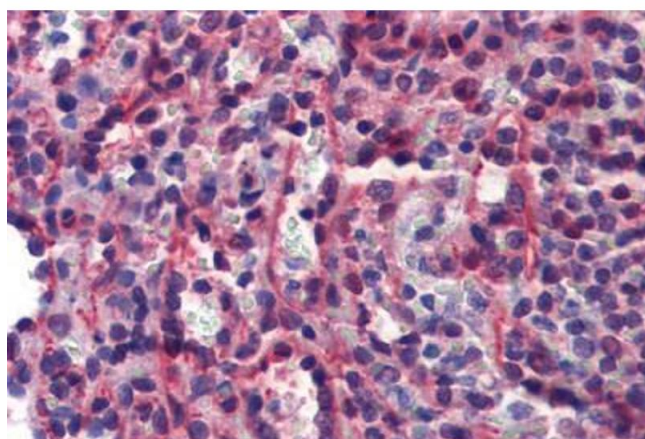
Format: Liquid

Concentration: Lot specific

## Handling

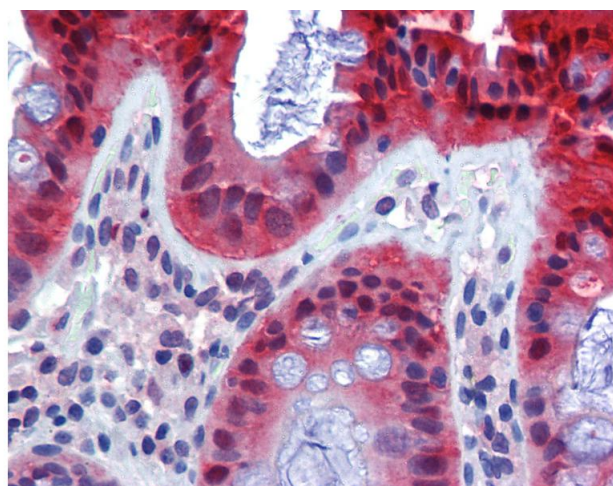
Buffer:	PBS (10 mM sodium phosphate, pH 7.2, 50 mM sodium chloride, 0.1 mM PMSF). Sourced in Ascites.
Preservative:	PMSF
Handling Advice:	avoid freeze thaw cycles. For maximum product recovery, after thawing, centrifuge the product vial before removing cap.
Storage:	4 °C, -20 °C
Storage Comment:	Short term 4°C, long term aliquot and store at -20°C, avoid freeze-thaw cycles. For maximum product recovery, after thawing, centrifuge the product vial before removing cap.

## Images



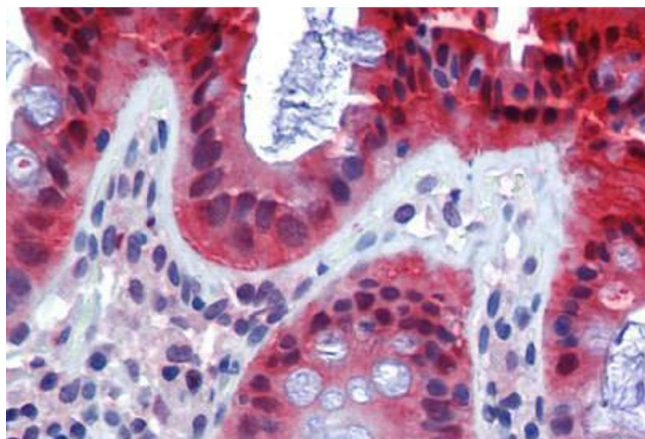
### Immunohistochemistry (Paraffin-embedded Sections)

**Image 1.** Human Spleen (formalin-fixed, paraffin-embedded) stained with CASP7 antibody ABIN462356 followed by biotinylated anti-mouse IgG secondary antibody ABIN481714, alkaline phosphatase-streptavidin and chromogen.



### Immunohistochemistry

**Image 2.** Anti-Caspase 7 antibody IHC of human colon. Immunohistochemistry of formalin-fixed, paraffin-embedded tissue after heat-induced antigen retrieval. Antibody concentration 10 ug/ml.



#### Immunohistochemistry (Paraffin-embedded Sections)

**Image 3.** Human Colon (formalin-fixed, paraffin-embedded) stained with CASP7 antibody ABIN462356 followed by biotinylated anti-mouse IgG secondary antibody ABIN481714, alkaline phosphatase-streptavidin and chromogen.

Please check the [product details page](#) for more images. Overall 4 images are available for ABIN462356.