

Datasheet for ABIN462359  
**anti-Cytochrome C antibody**

## 4 Images

[Go to Product page](#)

## Overview

Quantity:	50 µg
Target:	Cytochrome C (CYCS)
Reactivity:	Human, Rat, Mouse, Horse, Rabbit, Cow, Monkey, Sheep, Pig, Hamster, Guinea Pig
Host:	Mouse
Clonality:	Monoclonal
Conjugate:	This Cytochrome C antibody is un-conjugated
Application:	Western Blotting (WB), Immunohistochemistry (IHC), Immunohistochemistry (Paraffin-embedded Sections) (IHC (p))

## Product Details

Brand:	IHC-plus™
Immunogen:	Horse cytochrome c. Type of Immunogen: Protein
Clone:	7H8-2C12
Isotype:	IgG2b
Specificity:	Detects an ~14kD protein, corresponding to the apparent molecular mass of Cytochrome c on Western blots with samples from human, mouse, rat, bovine, guinea pig, hamster, monkey, rabbit and sheep origins. This antibody detects denatured Cytochrome c in applications such as Western blot, it does not recognize the native protein. The epitope of this antibody was mapped to a region within amino acids 93-104 of horse Cytochrome.

## Product Details

Purification: Protein G purified

## Target Details

Target: Cytochrome C (CYCS)

Alternative Name: CYCS / Cytochrome c ([CYCS Products](#))

Background: Name/Gene ID: CYCS

Synonyms: CYCS, CYC, HCS, THC4, Cytochrome c, Cytochrome c, somatic

Gene ID: 54205

UniProt: [P99999](#)

Pathways: [Apoptosis](#), [Caspase Cascade in Apoptosis](#), [Positive Regulation of Endopeptidase Activity](#)

## Application Details

Application Notes: Approved: IHC, IHC-P (5 µg/mL), WB (1 µg/mL)

Usage: Immunohistochemistry: This antibody was validated for use in immunohistochemistry on a panel of 21 formalin-fixed, paraffin-embedded (FFPE) human tissues after heat induced antigen retrieval in pH 6.0 citrate buffer. After incubation with the primary antibody, slides were incubated with biotinylated secondary antibody, followed by alkaline phosphatase-streptavidin and chromogen. The stained slides were evaluated by a pathologist to confirm staining specificity. The optimal working concentration for this antibody was determined to be 5 µg/mL.

Comment: Target Species of Antibody: Horse

Restrictions: For Research Use only

## Handling

Format: Liquid

Concentration: Lot specific

Buffer: PBS, pH 7.2, 50 % glycerol, 0.09 % azide

Preservative: Sodium azide

Precaution of Use: This product contains Sodium azide: a POISONOUS AND HAZARDOUS SUBSTANCE which should be handled by trained staff only.

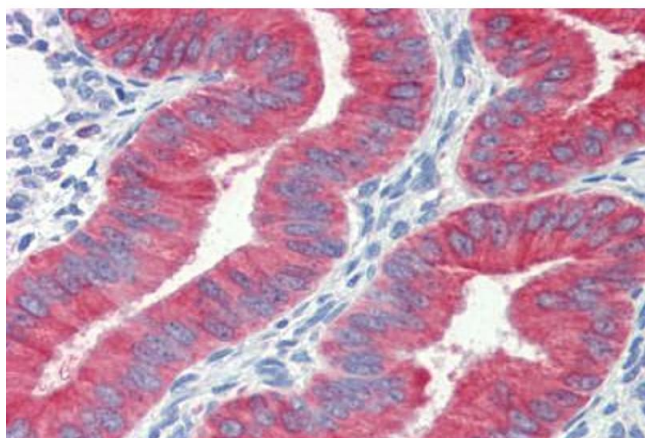
## Handling

Handling Advice: avoid freeze thaw cycles.

Storage: 4 °C, -20 °C

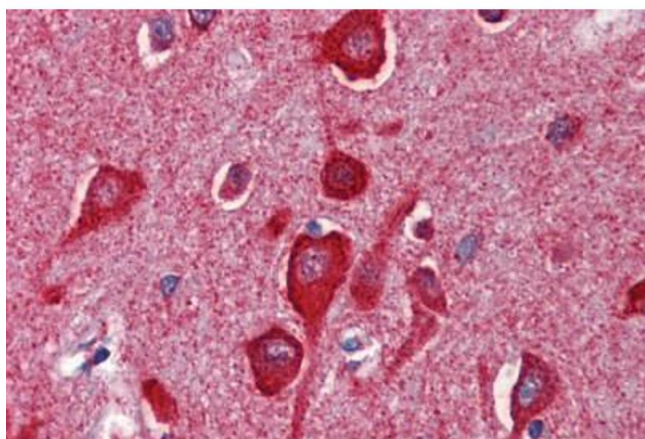
Storage Comment: Short term 4°C, long term aliquot and store at -20°C, avoid freeze-thaw cycles.

## Images



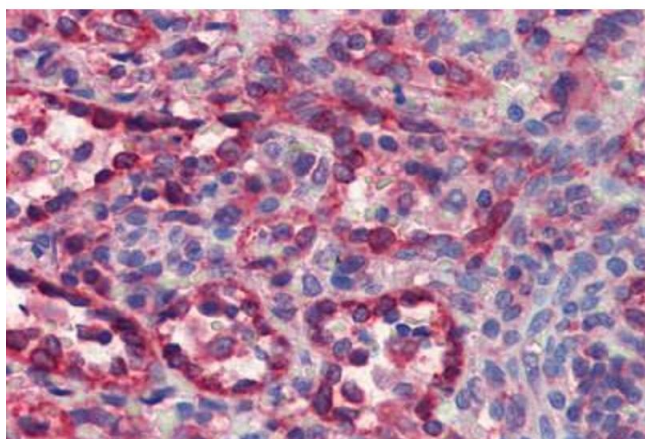
### Immunohistochemistry (Paraffin-embedded Sections)

**Image 1.** Human Uterus (formalin-fixed, paraffin-embedded) stained with CYCS antibody ABIN462359 followed by biotinylated anti-mouse IgG secondary antibody ABIN481714, alkaline phosphatase-streptavidin and chromogen.



### Immunohistochemistry (Paraffin-embedded Sections)

**Image 2.** Human Brain, Cortex (formalin-fixed, paraffin-embedded) stained with CYCS antibody ABIN462359 followed by biotinylated anti-mouse IgG secondary antibody ABIN481714, alkaline phosphatase-streptavidin and chromogen.



### Immunohistochemistry (Paraffin-embedded Sections)

**Image 3.** Human Spleen (formalin-fixed, paraffin-embedded) stained with CYCS antibody ABIN462359 followed by biotinylated anti-mouse IgG secondary antibody ABIN481714, alkaline phosphatase-streptavidin and chromogen.

## Images

---

Please check the [product details page](#) for more images. Overall 4 images are available for ABIN462359.