

Datasheet for ABIN462374

anti-AKT1/2 antibody

5 Images



[Go to Product page](#)

Overview

Quantity:	50 µg
Target:	AKT1/2
Reactivity:	Human, Mouse, Rat
Host:	Rabbit
Clonality:	Polyclonal
Conjugate:	This AKT1/2 antibody is un-conjugated
Application:	Western Blotting (WB), Immunohistochemistry (IHC), Immunoprecipitation (IP), Immunohistochemistry (Paraffin-embedded Sections) (IHC (p))

Product Details

Brand:	IHC-plus™
Immunogen:	Synthetic peptide derived from the sequence of human Akt, conjugated to KLH, sequence identical with rat and bovine. Type of Immunogen: Synthetic peptide - KLH conjugated
Purification:	Protein A purified

Target Details

Target:	AKT1/2
Alternative Name:	AKT1 + AKT2 (AKT1/2 Products)
Background:	Name/Gene ID: AKT1/AKT2

Target Details

Synonyms: AKT1/AKT2

This antibody detects: AKT1 + AKT2

Application Details

Application Notes: Approved: IHC, IHC-P (10 µg/mL), IP, WB (1:1000)

Usage: Immunohistochemistry: This antibody was validated for use in immunohistochemistry on a panel of 21 formalin-fixed, paraffin-embedded (FFPE) human tissues after heat induced antigen retrieval in pH 6.0 citrate buffer. After incubation with the primary antibody, slides were incubated with biotinylated secondary antibody, followed by alkaline phosphatase-streptavidin and chromogen. The stained slides were evaluated by a pathologist to confirm staining specificity. The optimal working concentration for this antibody was determined to be 10 µg/mL

Comment: Target Species of Antibody: Human

Restrictions: For Research Use only

Handling

Format: Liquid

Concentration: Lot specific

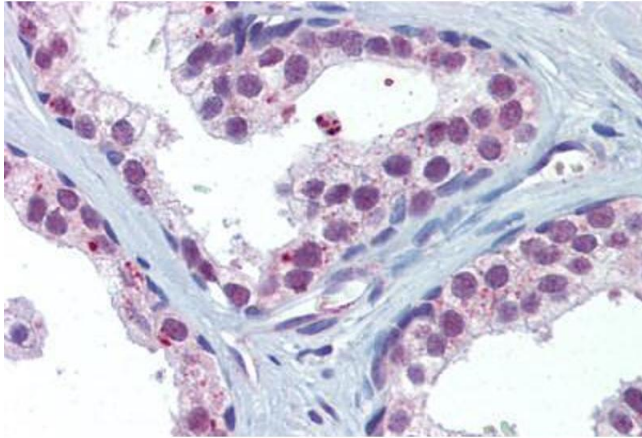
Buffer: PBS, 0.09 % azide, 50 % glycerol

Preservative: Sodium azide

Precaution of Use: This product contains Sodium azide: a POISONOUS AND HAZARDOUS SUBSTANCE which should be handled by trained staff only.

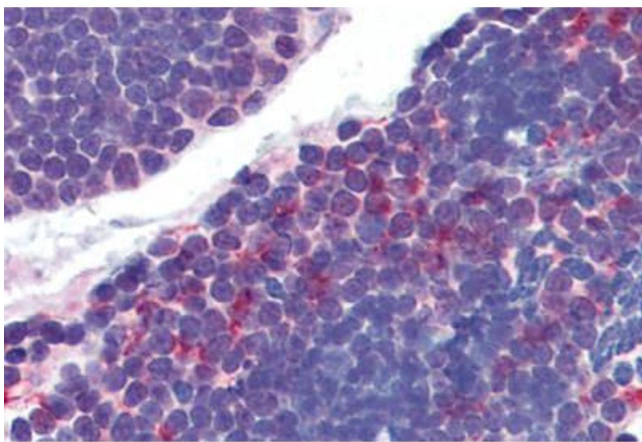
Storage: -20 °C

Storage Comment: Store at -20°C.



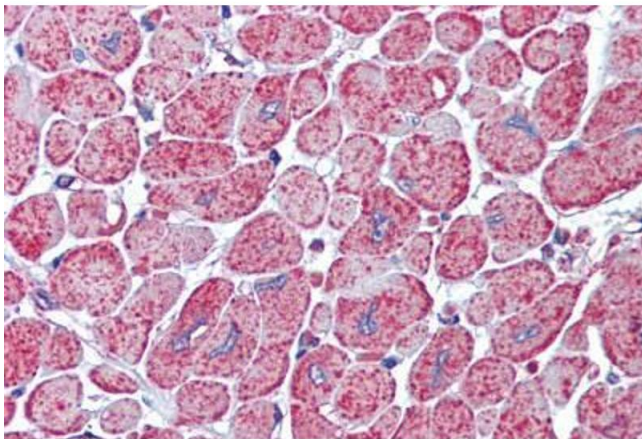
Immunohistochemistry (Formalin-fixed Paraffin-embedded Sections)

Image 1. Prostate, Human: Formalin-Fixed, Paraffin-Embedded (FFPE)



Immunohistochemistry (Formalin-fixed Paraffin-embedded Sections)

Image 2. Thymus, Human: Formalin-Fixed, Paraffin-Embedded (FFPE)



Immunohistochemistry

Image 3. Anti-AKT antibody IHC staining of human heart. Immunohistochemistry of formalin-fixed, paraffin-embedded tissue after heat-induced antigen retrieval. Antibody ABIN462374 concentration 10 ug/ml.

Please check the [product details page](#) for more images. Overall 5 images are available for ABIN462374.