

Datasheet for ABIN462406
anti-Integrin beta 2 antibody (AA 534-546)



[Go to Product page](#)

3 Images

Overview

Quantity:	0.05 mg
Target:	Integrin beta 2 (ITGB2)
Binding Specificity:	AA 534-546
Reactivity:	Human
Host:	Mouse
Clonality:	Monoclonal
Conjugate:	This Integrin beta 2 antibody is un-conjugated
Application:	Flow Cytometry (FACS), Western Blotting (WB), Immunohistochemistry (IHC), Immunoprecipitation (IP), Functional Studies (Func), Immunohistochemistry (Frozen Sections) (IHC (fro)), Immunohistochemistry (Paraffin-embedded Sections) (IHC (p))

Product Details

Brand:	IHC-plus™
Immunogen:	Leukocytes of a patient suffering from a LGL-type leukemia. Type of Immunogen: Cells
Clone:	MEM-48
Isotype:	IgG1
Specificity:	Recognizes an epitope involving residues 534-546 in cysteine-rich repeat 3 of the CD18 antigen (integrin beta2 subunit, beta2 integrin). CD18 is a 90-95 kD type I transmembrane protein expressed on all leukocytes.

Product Details

No Cross-Reactivity: Dog (Canine)

Purification: Protein A purified

Sterility: 0.2 µm filtered

Target Details

Target: Integrin beta 2 (ITGB2)

Alternative Name: ITGB2 / MAC-1 / CD18 ([ITGB2 Products](#))

Background: Name/Gene ID: ITGB2

Family: Integrin

Synonyms: ITGB2, CD18 antigen, CD18, Integrin beta chain, beta 2, LCAMB, MAC-1, MFI7, MF17, Integrin beta-2, LAD, LFA-1

Gene ID: 3689

UniProt: [P05107](#)

Pathways: [NF-kappaB Signaling](#), [Activation of Innate immune Response](#), [Toll-Like Receptors Cascades](#), [Activated T Cell Proliferation](#)

Application Details

Application Notes: Approved: Flo (2 µg/mL), Func, IHC, IHC-Fr, IHC-P (10 µg/mL), IP (2 µg/mL), WB (2 µg/mL)

Usage: Immunohistochemistry: This antibody was validated for use in immunohistochemistry on a panel of 21 formalin-fixed, paraffin-embedded (FFPE) human tissues after heat induced antigen retrieval in pH 6.0 citrate buffer. After incubation with the primary antibody,

Comment: Target Species of Antibody: Human

Restrictions: For Research Use only

Handling

Format: Liquid

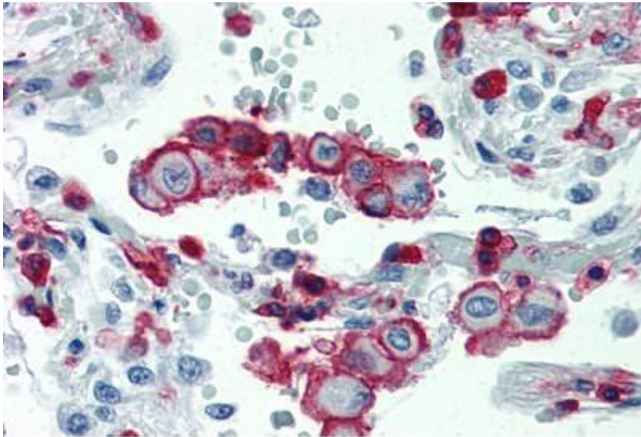
Concentration: Lot specific

Buffer: PBS, pH 7.4, 0.2 µm filtered

Handling

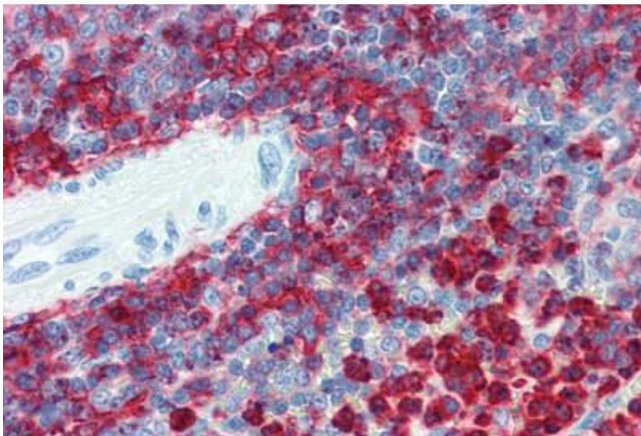
Handling Advice:	avoid freeze thaw cycles.
Storage:	4 °C
Storage Comment:	Store at 2-8°C. Do not freeze.

Images



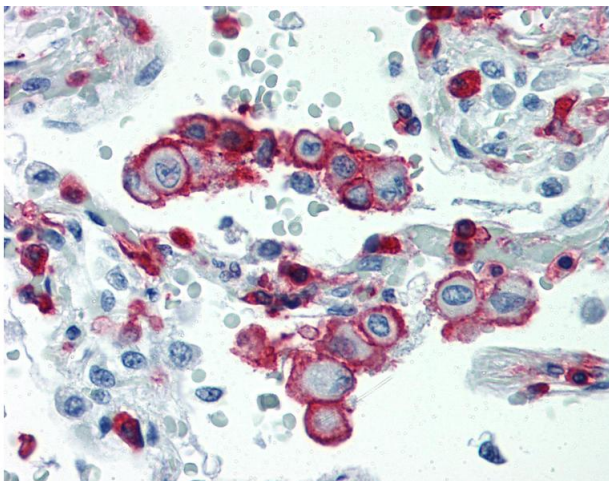
Immunohistochemistry (Formalin-fixed Paraffin-embedded Sections)

Image 1. Lung, Human: Formalin-Fixed, Paraffin-Embedded (FFPE)



Immunohistochemistry (Formalin-fixed Paraffin-embedded Sections)

Image 2. Spleen, Human: Formalin-Fixed, Paraffin-Embedded (FFPE)



Immunohistochemistry

Image 3. Anti-ITGB2 / CD18 antibody IHC staining of human lung. Immunohistochemistry of formalin-fixed, paraffin-embedded tissue after heat-induced antigen retrieval. Antibody concentration 10 ug/ml.