

Datasheet for ABIN462412
anti-CDK1 antibody



[Go to Product page](#)

3 Images

Overview

Quantity:	0.05 mg
Target:	CDK1
Reactivity:	Human, Cow, Primate
Host:	Mouse
Clonality:	Monoclonal
Conjugate:	This CDK1 antibody is un-conjugated
Application:	Western Blotting (WB), Immunohistochemistry (IHC), Immunoprecipitation (IP), Immunohistochemistry (Paraffin-embedded Sections) (IHC (p)), Immunocytochemistry (ICC)

Product Details

Brand:	IHC-plus™
Immunogen:	Recombinant human cdc2 protein. Type of Immunogen: Recombinant protein
Clone:	POH-1
Isotype:	IgG2a
Specificity:	The antibody POH-1 specifically detects Cdk1 (p34Cdc2). Staining of Cdk1 reflects the proliferating potential of respective tissue.
No Cross-Reactivity:	Mouse (Murine), Xenopus laevis, Fruit Fly (Drosophila melanogaster), Rat (Rattus)
Purification:	Protein A purified

Target Details

Target:	CDK1
Alternative Name:	CDK1 / CDC2 (CDK1 Products)
Background:	Name/Gene ID: CDK1 Subfamily: CDC2/CDK Family: Protein Kinase Synonyms: CDK1, CDC28A, CDC2, CDKN1, Cyclin-dependent kinase 1, p34 protein kinase, p34CDC2, CDC2a, Cell cycle controller CDC2, Cell division protein kinase 1, PSTAIR
Gene ID:	983
UniProt:	P06493
Pathways:	Cell Division Cycle , Fc-epsilon Receptor Signaling Pathway , Neurotrophin Signaling Pathway , Activation of Innate immune Response , Mitotic G1-G1/S Phases , DNA Replication , M Phase , Toll-Like Receptors Cascades , Synthesis of DNA

Application Details

Application Notes:	Approved: ICC, IHC, IHC-P (10 µg/mL), IP, WB Usage: Immunohistochemistry: This antibody was validated for use in immunohistochemistry on a panel of 21 formalin-fixed, paraffin-embedded (FFPE) human tissues after heat induced antigen retrieval in pH 6.0 citrate buffer. After incubation with the primary antibody,
Comment:	Target Species of Antibody: Human
Restrictions:	For Research Use only

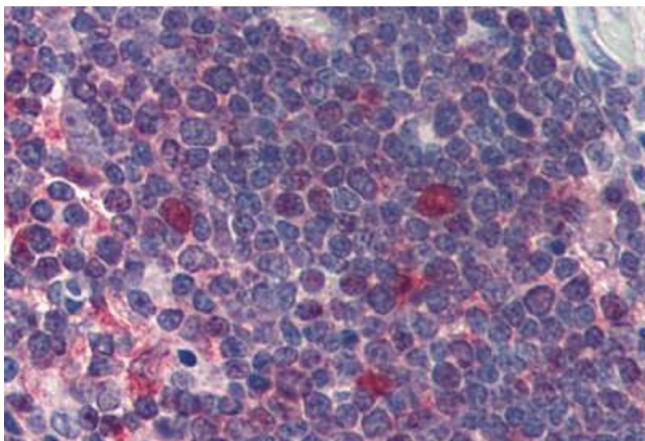
Handling

Format:	Liquid
Concentration:	Lot specific
Buffer:	PBS, 15 mM sodium azide, approx, pH 7.4.
Preservative:	Sodium azide
Precaution of Use:	This product contains Sodium azide: a POISONOUS AND HAZARDOUS SUBSTANCE which should be handled by trained staff only.
Handling Advice:	avoid freeze thaw cycles.

Handling

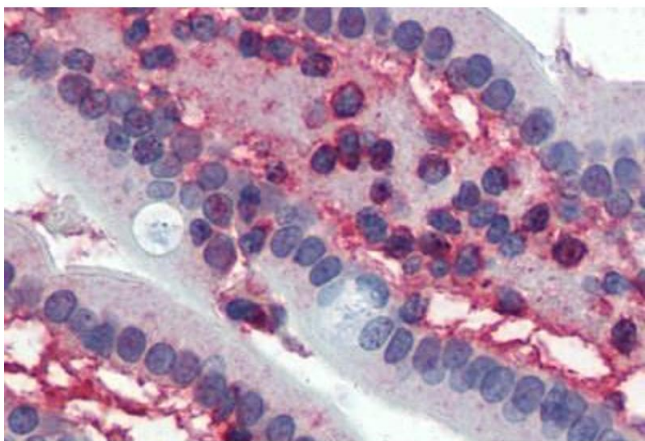
Storage:	4 °C,-20 °C
Storage Comment:	Short term 4°C, long term aliquot and store at -20°C, avoid freeze-thaw cycles.

Images



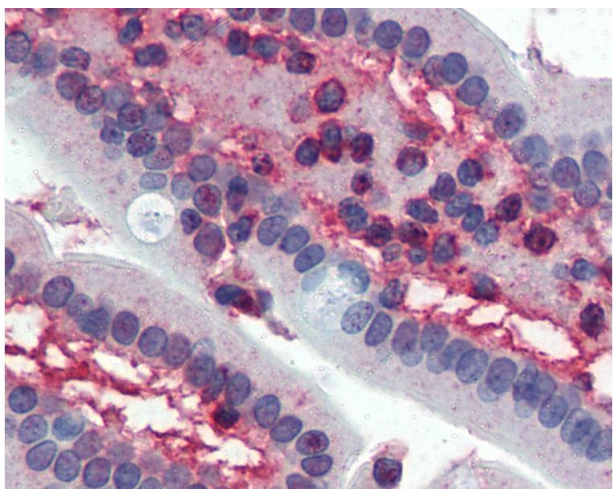
Immunohistochemistry (Formalin-fixed Paraffin-embedded Sections)

Image 1. Thymus, Human: Formalin-Fixed, Paraffin-Embedded (FFPE)



Immunohistochemistry (Formalin-fixed Paraffin-embedded Sections)

Image 2. Small intestine, Human: Formalin-Fixed, Paraffin-Embedded (FFPE)



Immunohistochemistry

Image 3. Anti-Cdc2 antibody IHC of human small intestine. Immunohistochemistry of formalin-fixed, paraffin-embedded tissue after heat-induced antigen retrieval. Antibody concentration 10 ug/ml.