

Datasheet for ABIN462429  
**anti-CAMK2B antibody**

## 2 Images

[Go to Product page](#)

## Overview

Quantity:	50 µg
Target:	CAMK2B
Reactivity:	Human, Mouse, Rat, Cow, Horse, Rabbit, Zebrafish (Danio rerio), Dog, Monkey, Xenopus laevis, Chicken, Pig
Host:	Rabbit
Clonality:	Polyclonal
Conjugate:	This CAMK2B antibody is un-conjugated
Application:	Western Blotting (WB), Immunohistochemistry (IHC), Immunohistochemistry (Paraffin-embedded Sections) (IHC (p))

## Product Details

Brand:	IHC-plus™
Immunogen:	<p>A 14 residue synthetic peptide CTRFTDEYQLFEEL based on the rat multifunctional calmodulin-dependent kinase II delta isoform (residues 7-20) and the peptide coupled to KLH. Percent identity by BLAST analysis: Human, Gorilla, Gibbon, Monkey, Marmoset, Mouse, Rat, Elephant, Dog, Bovine, Horse, Rabbit, Pig, Opossum, Chicken, Xenopus, Pufferfish, Zebrafish (100%), Orangutan (93%).</p> <p>Type of Immunogen: Synthetic peptide - KLH conjugated</p>
Specificity:	Detects proteins of 50-60 kD, corresponding to apparent molecular mass of CaMKII isoforms on SDS-PAGE immunoblots. Recombinant rat calmodulin-dependent protein kinase II alpha subunits expressed in sf9 insect cells are also detected. As the sequences of the rat alpha,

## Product Details

delta, and gamma isoforms are conserved over this amino terminus region, this antibody is expected to recognize the delta, gamma and alpha isoforms. This antibody is not expected to cross-react with the beta isoform. Proteins of unknown identity, ~40, 45 and 90 kD, may be detected on immunoblot analysis with some lysates.

Predicted Reactivity: Percent identity by BLAST analysis: Human, Gorilla, Gibbon, Monkey, Marmoset, Mouse, Rat, Elephant, Dog, Bovine, Horse, Rabbit, Pig, Opossum, Chicken, Xenopus, Pufferfish, Zebrafish (100%) Orangutan (93%).

Purification: Immunoaffinity purified

## Target Details

Target: CAMK2B

Alternative Name: CAMK2 / CAMKII ([CAMK2B Products](#))

Background: Name/Gene ID: CAMK2

Synonyms: CAMK2

Pathways: [WNT Signaling](#), [Interferon-gamma Pathway](#), [Myometrial Relaxation and Contraction](#), [Regulation of G-Protein Coupled Receptor Protein Signaling](#), [Smooth Muscle Cell Migration](#), [Regulation of long-term Neuronal Synaptic Plasticity](#)

## Application Details

Application Notes: Approved: IHC, IHC-P (10 µg/mL), WB (1:1000)

Usage: Immunohistochemistry: This antibody was validated for use in immunohistochemistry on a panel of 21 formalin-fixed, paraffin-embedded (FFPE) human tissues after heat induced antigen retrieval in pH 6.0 citrate buffer. After incubation with the primary antibody, slides were incubated with biotinylated secondary antibody, followed by alkaline phosphatase-streptavidin and chromogen. The stained slides were evaluated by a pathologist to confirm staining specificity. The optimal working concentration for this antibody was determined to be 10 µg/mL.

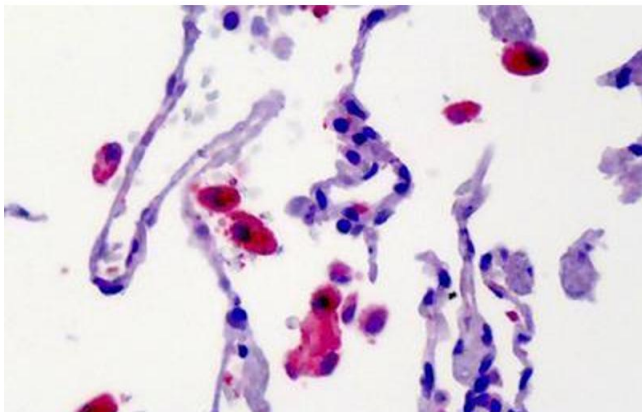
Comment: Target Species of Antibody: Rat

Restrictions: For Research Use only

## Handling

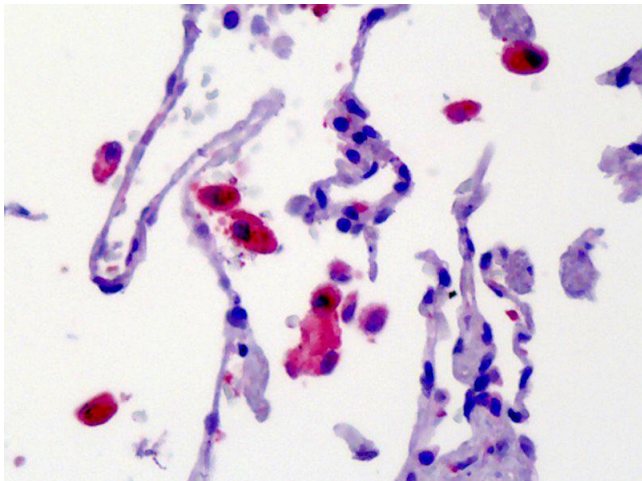
Format:	Liquid
Concentration:	Lot specific
Buffer:	BBS, pH 8.2 (25 mM sodium borate, 100 mM boric acid, 75 mM sodium chloride, 5 mM EDTA)
Storage:	-20 °C
Storage Comment:	Store at -20°C.

## Images



### Immunohistochemistry (Formalin-fixed Paraffin-embedded Sections)

**Image 1.** Human Lung: Formalin-Fixed, Paraffin-Embedded (FFPE)



### Immunohistochemistry

**Image 2.** Anti-CAMK2 antibody IHC of human lung. Immunohistochemistry of formalin-fixed, paraffin-embedded tissue after heat-induced antigen retrieval. Antibody concentration 10 ug/ml.