

Datasheet for ABIN462434

**anti-eIF4EBP1 antibody (AA 101-118)****3** Images[Go to Product page](#)

## Overview

Quantity:	50 µg
Target:	eIF4EBP1 (EIF4EBP1)
Binding Specificity:	AA 101-118
Reactivity:	Human, Mouse, Rat, Rabbit, Hamster
Host:	Rabbit
Clonality:	Polyclonal
Conjugate:	This eIF4EBP1 antibody is un-conjugated
Application:	Western Blotting (WB), Immunohistochemistry (IHC), Immunohistochemistry (Paraffin-embedded Sections) (IHC (p)), Gel Shift (GS)

## Product Details

Brand:	IHC-plus™
Immunogen:	<p>An 18 residue synthetic peptide SPEDKRAGGEESQFEMDI based on the human PHAS-I (residues 101-118) and the peptide coupled to KLH. This sequence is identical to rat and mouse PHAS- I over these residues. Percent identity by BLAST analysis: Human, Gorilla, Mouse, Rat, Hamster, Rabbit (100%), Marmoset, Goat, Elephant, Dog, Bat, Bovine, Horse (94%), Panda (83%).</p> <p>Type of Immunogen: Synthetic peptide - KLH conjugated</p>
Specificity:	<p>Detects multiple bands at 19-25 kD, corresponding to the apparent molecular mass of the various phosphorylation states of PHAS-I protein on SDS-PAGE immunoblots. This antibody provides a simple read-out for PKB (Akt) activity in vivo through the use of gel-shift assays. Antibody specificity has been confirmed in Western blot peptide competition studies.</p>

## Product Details

Predicted Reactivity: Percent identity by BLAST analysis: Human, Gorilla, Mouse, Rat, Hamster, Rabbit (100%)  
Marmoset, Goat, Elephant, Dog, Bat, Bovine, Horse (94%) Panda (83%).

Purification: Immunoaffinity purified

## Target Details

Target: eIF4EBP1 (EIF4EBP1)

Alternative Name: EIF4EBP1 / 4EBP1 ([EIF4EBP1 Products](#))

Background: Name/Gene ID: EIF4EBP1

Synonyms: EIF4EBP1, 4E-BP1, 4EBP1, BP-1, PHAS-I, EIF4E-binding protein 1

Gene ID: 1978

UniProt: [Q13541](#)

Pathways: [MAPK Signaling](#), [PI3K-Akt Signaling](#), [RTK Signaling](#), [AMPK Signaling](#), [Regulation of Cell Size](#),  
[BCR Signaling](#)

## Application Details

Application Notes: Approved: GS, IHC, IHC-P (5 - 10 µg/mL), WB (4 µg/mL)

Usage: Immunohistochemistry: This antibody was validated for use in immunohistochemistry on a panel of 21 formalin-fixed, paraffin-embedded (FFPE) human tissues after heat induced antigen retrieval in pH 6.0 citrate buffer. After incubation with the primary antibody, slides were incubated with biotinylated secondary antibody, followed by alkaline phosphatase-streptavidin and chromogen. The stained slides were evaluated by a pathologist to confirm staining specificity. The optimal working concentration for this antibody was determined to be 10 µg/mL.

Comment: Target Species of Antibody: Human

Restrictions: For Research Use only

## Handling

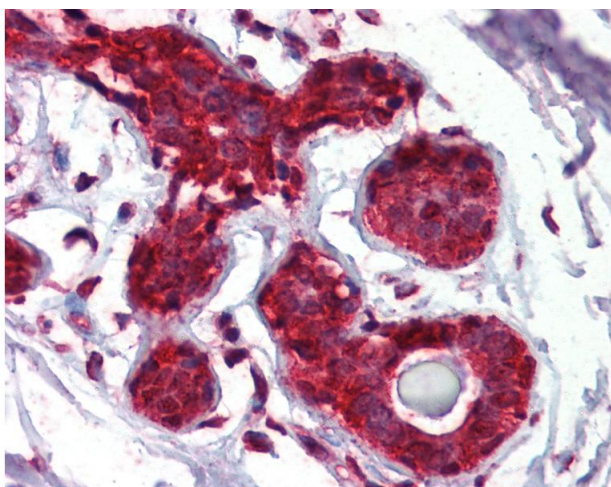
Format: Liquid

Concentration: Lot specific

## Handling

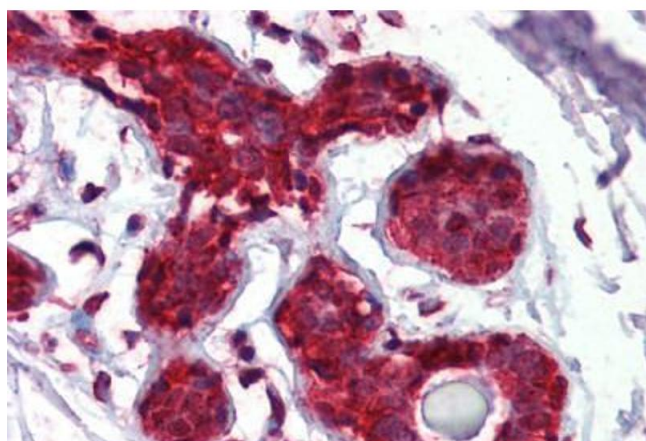
Buffer:	BBS, pH 8.4 (25 mM sodium borate, 100 mM boric acid, 75 mM sodium chloride, 5 mM EDTA)
Handling Advice:	avoid freeze thaw cycles. For maximum product recovery, after thawing, centrifuge the product vial before removing cap.
Storage:	4 °C, -20 °C
Storage Comment:	Short term 4°C, long term aliquot and store at -20°C, avoid freeze-thaw cycles. For maximum product recovery, after thawing, centrifuge the product vial before removing cap.

## Images



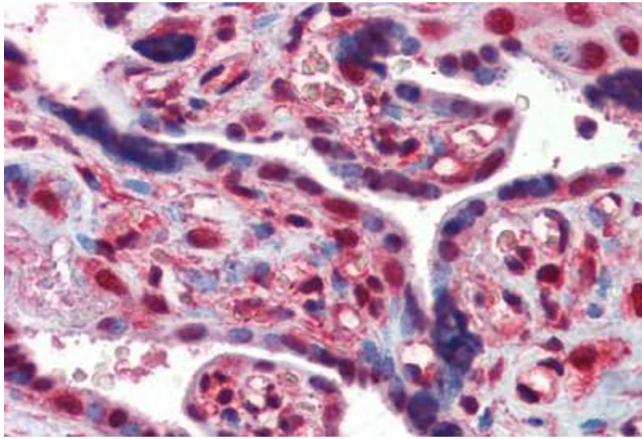
### Immunohistochemistry

**Image 1.** Anti-EIF4EBP1 / 4EBP1 antibody IHC of human breast. Immunohistochemistry of formalin-fixed, paraffin-embedded tissue after heat-induced antigen retrieval. Antibody concentration 5 ug/ml.



### Immunohistochemistry (Formalin-fixed Paraffin-embedded Sections)

**Image 2.** Breast, Human: Formalin-Fixed, Paraffin-Embedded (FFPE)



### Immunohistochemistry (Formalin-fixed Paraffin-embedded Sections)

**Image 3.** Placenta, Human: Formalin-Fixed, Paraffin-Embedded (FFPE)