



[Go to Product page](#)

Datasheet for ABIN462451

## anti-AIF antibody (AA 593-606)

### 3 Images

#### Overview

Quantity:	0.05 mg
Target:	AIF (AIFM1)
Binding Specificity:	AA 593-606
Reactivity:	Human, Mouse, Rat, Pig, Cow, Dog, Horse, Monkey, Rabbit, Hamster, Bat
Host:	Rabbit
Clonality:	Polyclonal
Conjugate:	This AIF antibody is un-conjugated
Application:	Western Blotting (WB), ELISA, Immunohistochemistry (IHC), Immunohistochemistry (Paraffin-embedded Sections) (IHC (p)), Immunocytochemistry (ICC)

#### Product Details

Brand:	IHC-plus™
Isotype:	IgG
Predicted Reactivity:	Percent identity by BLAST analysis: Human, Gorilla, Gibbon, Monkey, Marmoset, Mouse, Rat, Hamster, Elephant, Panda, Bovine, Dog, Bat, Cat, Horse, Rabbit, Pig (100%) Opossum, Xenopus (93%) Turkey, Chicken, Stickleback, Pufferfish, Zebrafish (86%).
Purification:	Immunoaffinity purified

#### Target Details

Target:	AIF (AIFM1)
Alternative Name:	AIFM1 / AIF / PDCD8 ( <a href="#">AIFM1 Products</a> )

## Target Details

---

Background:	Name/Gene ID: AIFM1 Family: Apoptosis  Synonyms: AIFM1, AIF, COXPD6, PDCD8, Programmed cell death 8
Gene ID:	9131
UniProt:	<a href="#">O95831</a>
Pathways:	<a href="#">Apoptosis</a> , <a href="#">Positive Regulation of Endopeptidase Activity</a> , <a href="#">Cell RedoxHomeostasis</a> , <a href="#">Smooth Muscle Cell Migration</a> , <a href="#">Warburg Effect</a>

## Application Details

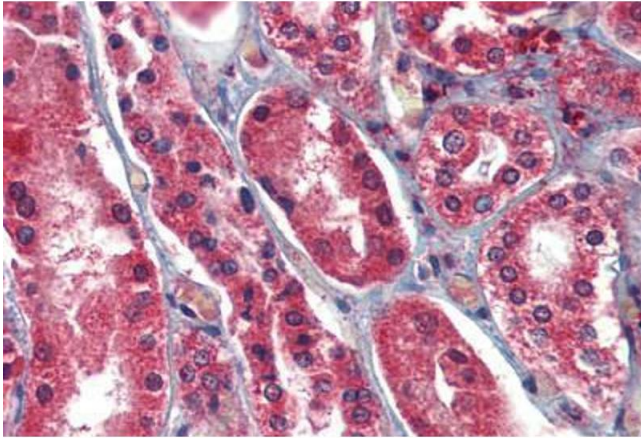
---

Application Notes:	Approved: ELISA, ICC, IHC, IHC-P (5 µg/mL), WB (0.25 - 1 µg/mL)
Comment:	Target Species of Antibody: Human
Restrictions:	For Research Use only

## Handling

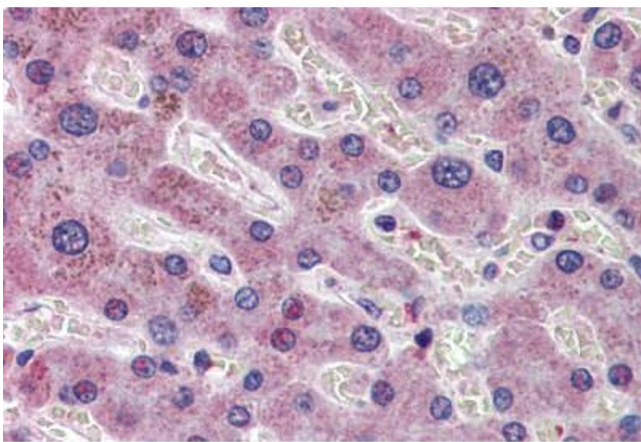
---

Format:	Liquid
Concentration:	Lot specific
Buffer:	PBS, 0.02 % sodium azide.
Preservative:	Sodium azide
Precaution of Use:	This product contains Sodium azide: a POISONOUS AND HAZARDOUS SUBSTANCE which should be handled by trained staff only.
Handling Advice:	avoid freeze thaw cycles. Store undiluted.
Storage:	4 °C,-20 °C
Storage Comment:	Store at 4°C for 3 months and -20°C, stable for up to 1 year. Avoid repeated freeze-thaw cycles.
Expiry Date:	12 months



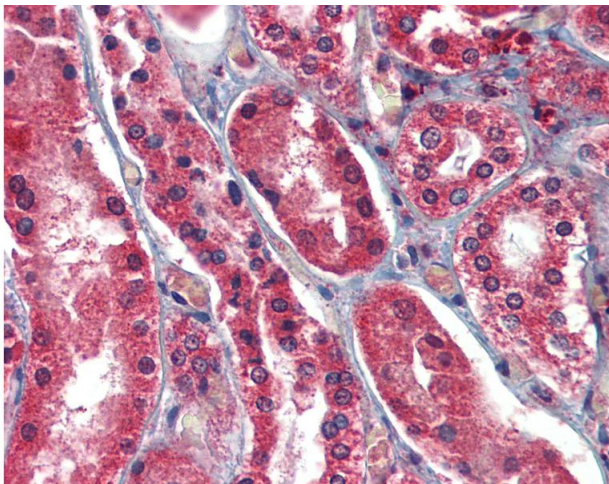
### Immunohistochemistry (Formalin-fixed Paraffin-embedded Sections)

**Image 1.** Human Kidney: Formalin-Fixed, Paraffin-Embedded (FFPE)



### Immunohistochemistry (Formalin-fixed Paraffin-embedded Sections)

**Image 2.** Human Liver: Formalin-Fixed, Paraffin-Embedded (FFPE)



### Immunohistochemistry

**Image 3.** Anti-AIFM1 / AIF antibody IHC of human kidney. Immunohistochemistry of formalin-fixed, paraffin-embedded tissue after heat-induced antigen retrieval. Antibody concentration 5 ug/ml.