



[Go to Product page](#)

Datasheet for ABIN462457

anti-COL6 antibody

2 Images

Overview

Quantity:	50 µg
Target:	COL6
Reactivity:	Human
Host:	Goat
Clonality:	Polyclonal
Application:	ELISA, Immunohistochemistry (IHC), Immunohistochemistry (Paraffin-embedded Sections) (IHC (p)), Immunohistochemistry (Frozen Sections) (IHC (fro)), Immunocytochemistry (ICC), Dot Blot (DB)

Product Details

Brand:	IHC-plus™
Immunogen:	Human type VI collagen. Type of Immunogen: Purified protein
Specificity:	Reacts with conformational determinants on bovine and human type VI collagen as demonstrated by ELISA. May react with type VI collagen from other species. Exhibits < 10 % cross-reactivity with collagen type I, II, III, IV and V. Has not been tested for reactivity with other ECM proteins (e. g., laminin, fibronectin).
Purification:	Immunoaffinity purified

Target Details

Target:	COL6
---------	------

Target Details

Alternative Name: Collagen VI ([COL6 Products](#))

Application Details

Application Notes: Approved: DB, ELISA, ICC (1:10 - 1:20), IHC, IHC-Fr, IHC-P (10 µg/mL)

Usage: Immunohistochemistry: This antibody was validated for use in immunohistochemistry on a panel of 21 formalin-fixed, paraffin-embedded (FFPE) human tissues after heat induced antigen retrieval in pH 6.0 citrate buffer. After incubation with the primary antibody, slides were incubated with biotinylated secondary antibody, followed by alkaline phosphatase-streptavidin and chromogen. The stained slides were evaluated by a pathologist to confirm staining specificity. The optimal working concentration for this antibody was determined to be 10 µg/mL.

Comment: Target Species of Antibody: Human

Restrictions: For Research Use only

Handling

Format: Liquid

Concentration: Lot specific

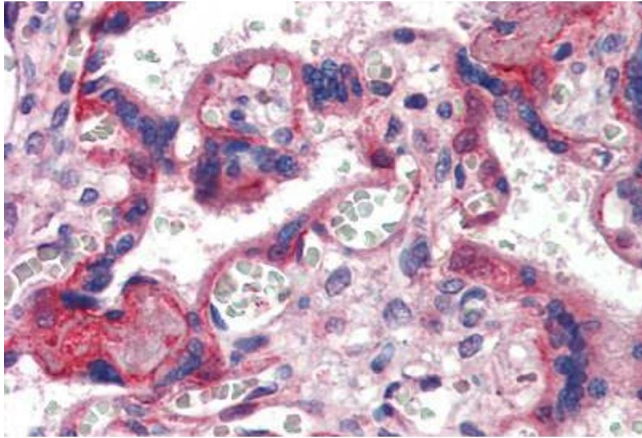
Buffer: Borate buffered saline, pH 8.2. No preservatives or amine-containing buffer salts added.

Preservative: Without preservative

Handling Advice: Avoid repeated freezing and thawing.

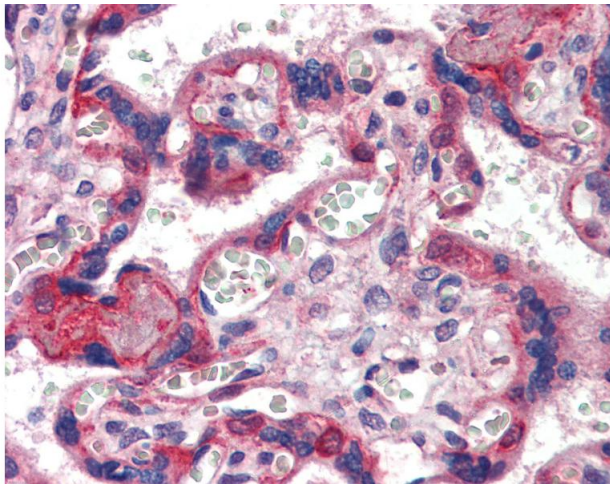
Storage: 4 °C, -20 °C

Storage Comment: 4°C or -20°C, Avoid freeze-thaw cycles.



Immunohistochemistry (Formalin-fixed Paraffin-embedded Sections)

Image 1. Placenta, Human: Formalin-Fixed, Paraffin-Embedded (FFPE)



Immunohistochemistry

Image 2. Anti-Collagen VI antibody IHC of human placenta. Immunohistochemistry of formalin-fixed, paraffin-embedded tissue after heat-induced antigen retrieval. Antibody concentration 10 ug/ml.