



[Go to Product page](#)

Datasheet for ABIN462467

## anti-DC-SIGN/CD209 antibody

### 4 Images

#### Overview

Quantity:	50 µg
Target:	DC-SIGN/CD209 (CD209)
Reactivity:	Human
Host:	Rat
Clonality:	Monoclonal
Conjugate:	This DC-SIGN/CD209 antibody is un-conjugated
Application:	Flow Cytometry (FACS), Immunohistochemistry (IHC), Immunohistochemistry (Paraffin-embedded Sections) (IHC (p)), Immunoprecipitation (IP)

#### Product Details

Brand:	IHC-plus™
Immunogen:	Human CD209
Clone:	H209
Isotype:	IgG2a kappa
Purification:	Affinity purified

#### Target Details

Target:	DC-SIGN/CD209 (CD209)
Alternative Name:	CD209 / DC-SIGN ( <a href="#">CD209 Products</a> )
Background:	Name/Gene ID: CD209

## Target Details

---

Synonyms: CD209, CD209 antigen, CD209 Molecule, CDSIGN, CLEC4L, DC-SIGN, HIV gp120-binding protein, DC-SIGN1

Gene ID: 30835

UniProt: [Q9NNX6](#)

## Application Details

---

Application Notes: Approved: Flo, IHC, IHC-P (20 µg/mL), IP

Usage: Immunohistochemistry: This antibody was validated for use in immunohistochemistry on a panel of 21 formalin-fixed, paraffin-embedded (FFPE) human tissues after heat induced antigen retrieval in pH 6.0 citrate buffer. After incubation with the primary antibody, slides were incubated with biotinylated secondary antibody, followed by alkaline phosphatase-streptavidin and chromogen. The stained slides were evaluated by a pathologist to confirm staining specificity. The optimal working concentration for this antibody was determined to be 20 µg/mL. Tested by flow cytometric analysis of cultured human dendritic cells and peripheral blood leukocytes. This can be used at less than or equal to 1 µg per test. A test is defined as the amount (ug) of antibody that will stain a cell sample in a final volume of 100 µL. Cell number should be determined empirically but can range from 10<sup>5</sup> to 10<sup>8</sup> cells/test.

Comment: Target Species of Antibody: Human

Restrictions: For Research Use only

## Handling

---

Format: Liquid

Concentration: Lot specific

Buffer: Aqueous buffer, 0.09 % sodium azide, may contain carrier protein/stabilizer.

Preservative: Sodium azide

Precaution of Use: This product contains Sodium azide: a POISONOUS AND HAZARDOUS SUBSTANCE which should be handled by trained staff only.

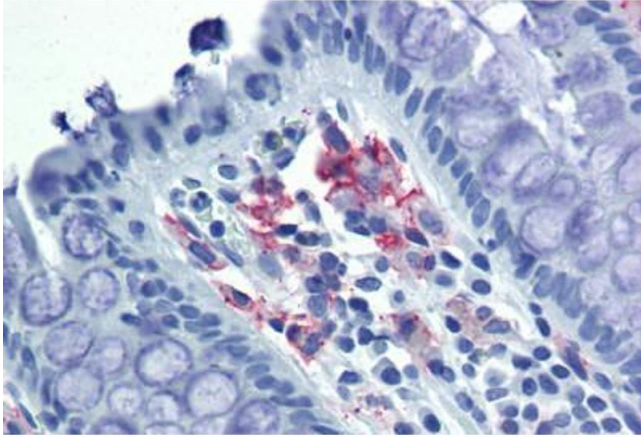
Handling Advice: avoid freezing and store undiluted.

Storage: 4 °C

## Handling

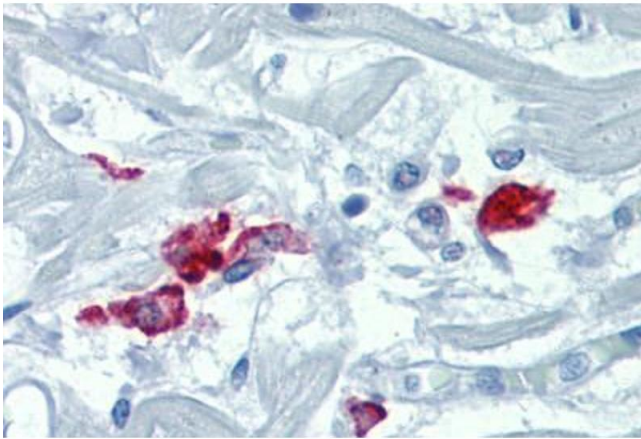
Storage Comment: Store at 4°C, avoid freeze-thaw cycles.

## Images



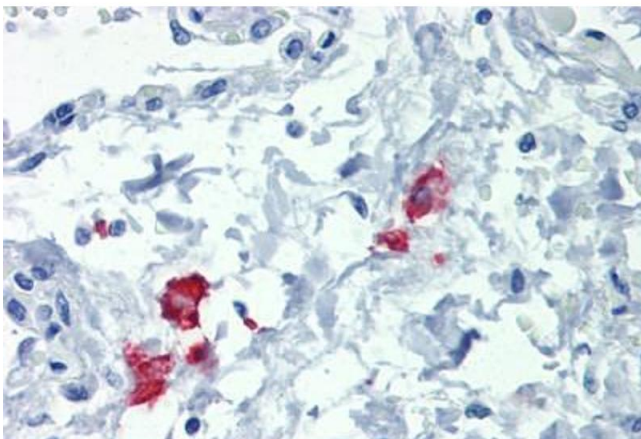
### Immunohistochemistry (Formalin-fixed Paraffin-embedded Sections)

**Image 1.** Colon, Human: Formalin-Fixed, Paraffin-Embedded (FFPE)



### Immunohistochemistry (Formalin-fixed Paraffin-embedded Sections)

**Image 2.** Heart, Human: Formalin-Fixed, Paraffin-Embedded (FFPE)



### Immunohistochemistry (Formalin-fixed Paraffin-embedded Sections)

**Image 3.** Lung, Human: Formalin-Fixed, Paraffin-Embedded (FFPE)

Please check the [product details page](#) for more images. Overall 4 images are available for ABIN462467.