



[Go to Product page](#)

Datasheet for ABIN462495

anti-Hemopexin antibody (AA 32-45)

3 Images

Overview

Quantity:	50 µg
Target:	Hemopexin (HPX)
Binding Specificity:	AA 32-45
Reactivity:	Human, Monkey
Host:	Goat
Clonality:	Polyclonal
Conjugate:	This Hemopexin antibody is un-conjugated
Application:	Immunohistochemistry (IHC), Immunohistochemistry (Paraffin-embedded Sections) (IHC (p))

Product Details

Brand:	IHC-plus™
Immunogen:	Synthetic peptide C-HGNVAEGETKPDPD from an internal region of human HPX / Hemopexin (NP_000604.1). Percent identity by BLAST analysis: Human, Gorilla, Orangutan, Monkey (100%), Marmoset (86%). Type of Immunogen: Synthetic peptide
Specificity:	Human HPX / Hemopexin.
Predicted Reactivity:	Percent identity by BLAST analysis: Human, Gorilla, Orangutan, Monkey (100%) Marmoset (86%).
Purification:	Immunoaffinity purified

Target Details

Target:	Hemopexin (HPX)
Alternative Name:	HPX / Hemopexin (HPX Products)
Background:	Name/Gene ID: HPX Synonyms: HPX, Hemopexin, HX, Beta-1B-glycoprotein
Gene ID:	3263
NCBI Accession:	NP_000604
UniProt:	P02790
Pathways:	Transition Metal Ion Homeostasis , Regulation of Leukocyte Mediated Immunity , Positive Regulation of Immune Effector Process , Production of Molecular Mediator of Immune Response

Application Details

Application Notes:	Approved: IHC, IHC-P (3.75 µg/mL) Usage: Immunohistochemistry: This antibody was validated for use in immunohistochemistry on a panel of 21 formalin-fixed, paraffin-embedded (FFPE) human tissues after heat induced antigen retrieval in pH 6.0 citrate buffer. After incubation with the primary antibody, slides were incubated with biotinylated secondary antibody, followed by alkaline phosphatase-streptavidin and chromogen. The stained slides were evaluated by a pathologist to confirm staining specificity. The optimal working concentration for this antibody was determined to be 3.75 µg/mL.
Comment:	Target Species of Antibody: Human
Restrictions:	For Research Use only

Handling

Format:	Liquid
Concentration:	Lot specific
Buffer:	Tris-buffered saline, pH 7.3, 0.5 % BSA, 0.02 % sodium azide
Preservative:	Sodium azide
Precaution of Use:	This product contains Sodium azide: a POISONOUS AND HAZARDOUS SUBSTANCE which

Handling

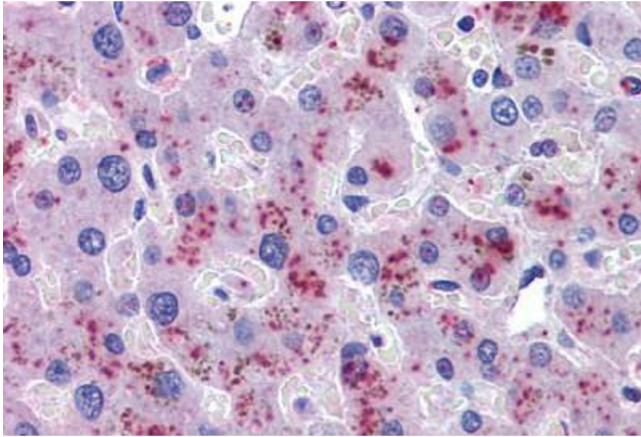
should be handled by trained staff only.

Handling Advice: Minimize freezing and thawing.

Storage: -20 °C

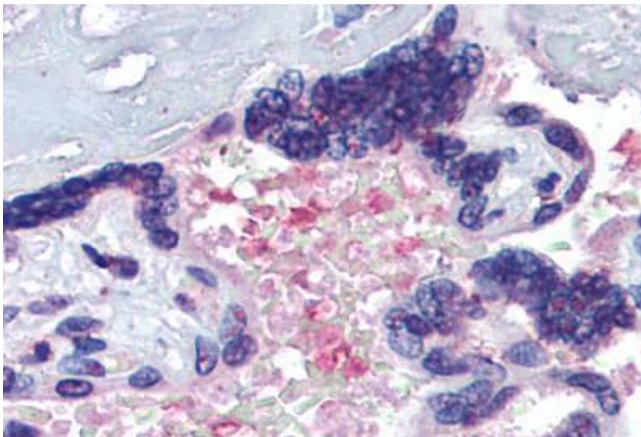
Storage Comment: Store at -20°C. Avoid freeze-thaw cycles.

Images



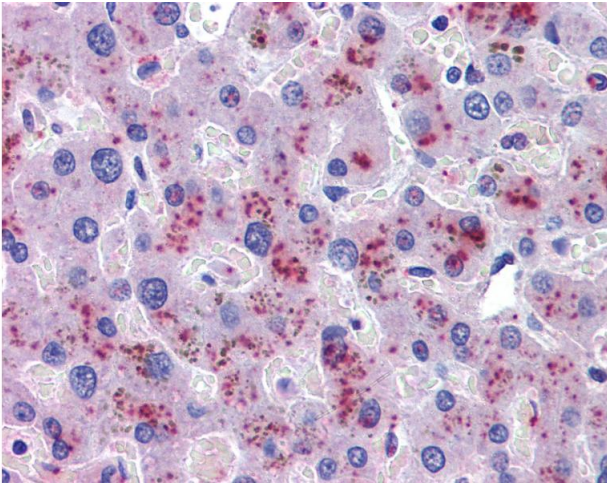
Immunohistochemistry (Formalin-fixed Paraffin-embedded Sections)

Image 1. Liver, Human: Formalin-Fixed, Paraffin-Embedded (FFPE)



Immunohistochemistry (Formalin-fixed Paraffin-embedded Sections)

Image 2. Placenta, serum, Human: Formalin-Fixed, Paraffin-Embedded (FFPE)



Immunohistochemistry

Image 3. Anti-Hemopexin antibody IHC of human liver. Immunohistochemistry of formalin-fixed, paraffin-embedded tissue after heat-induced antigen retrieval. Antibody concentration 3.75 ug/ml.