

Datasheet for ABIN462512
anti-RASSF2 antibody (AA 11-22)[Go to Product page](#)

4 Images

Overview

Quantity:	50 µg
Target:	RASSF2
Binding Specificity:	AA 11-22
Reactivity:	Human, Monkey, Cow, Dog, Horse, Rabbit, Pig
Host:	Goat
Clonality:	Polyclonal
Conjugate:	This RASSF2 antibody is un-conjugated
Application:	Immunohistochemistry (Paraffin-embedded Sections) (IHC (p)), Immunohistochemistry (IHC)

Product Details

Brand:	IHC-plus™
Immunogen:	Synthetic peptide PCGQDKYISKNE from the N-terminus of human RASSF2 (NP_055552.1, NP_739580.1). Percent identity by BLAST analysis: Human, Gorilla, Gibbon, Marmoset, Elephant, Panda, Dog, Bovine, Horse, Rabbit, Pig, Opossum (100%), Bat, Xenopus (92%), Chicken, Frog (83%). Type of Immunogen: Synthetic peptide
Specificity:	Human RASSF2. Reported variants represent identical protein: NP_055552.1, NP_739580.1.
Predicted Reactivity:	Percent identity by BLAST analysis: Human, Gorilla, Gibbon, Marmoset, Elephant, Panda, Dog, Bovine, Horse, Rabbit, Pig, Opossum (100%) Bat, Xenopus (92%) Chicken, Frog (83%).
Purification:	Immunoaffinity purified

Target Details

Target:	RASSF2
Alternative Name:	RASSF2 (RASSF2 Products)
Background:	Name/Gene ID: RASSF2 Synonyms: RASSF2, CENP-34, KIAA0168, RASFADIN, Centromere protein 34
Gene ID:	9770
NCBI Accession:	NP_055552 , NP_739580
UniProt:	P50749

Application Details

Application Notes:	Approved: IHC, IHC-P (3.75 µg/mL) Usage: Immunohistochemistry: This antibody was validated for use in immunohistochemistry on a panel of 21 formalin-fixed, paraffin-embedded (FFPE) human tissues after heat induced antigen retrieval in pH 6.0 citrate buffer. After incubation with the primary antibody, slides were incubated with biotinylated secondary antibody, followed by alkaline phosphatase-streptavidin and chromogen. The stained slides were evaluated by a pathologist to confirm staining specificity. The optimal working concentration for this antibody was determined to be 3.75 µg/mL.
Comment:	Target Species of Antibody: Human
Restrictions:	For Research Use only

Handling

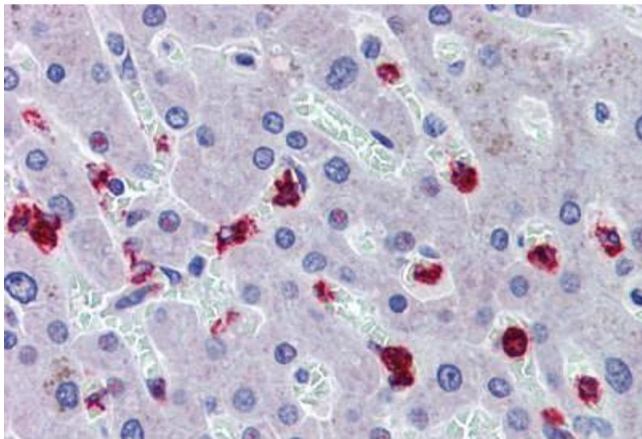
Format:	Liquid
Concentration:	Lot specific
Buffer:	Tris-buffered saline, pH 7.3, 0.5 % BSA, 0.02 % sodium azide
Preservative:	Sodium azide
Precaution of Use:	This product contains Sodium azide: a POISONOUS AND HAZARDOUS SUBSTANCE which should be handled by trained staff only.
Handling Advice:	Minimize freezing and thawing.

Handling

Storage: -20 °C

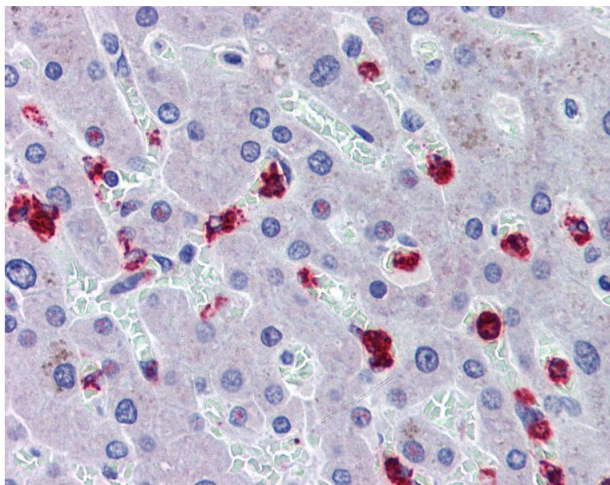
Storage Comment: Store at -20°C. Avoid freeze-thaw cycles.

Images



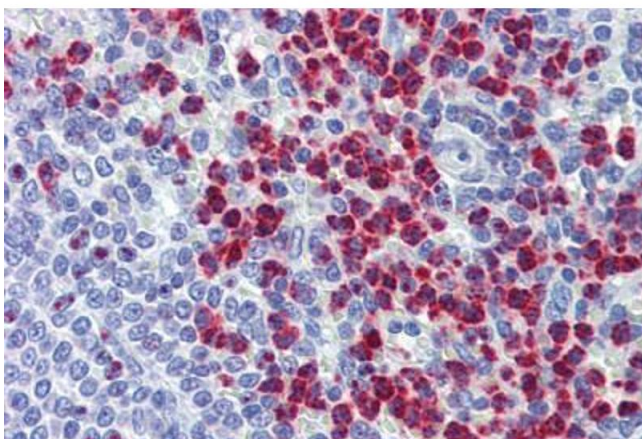
Immunohistochemistry (Formalin-fixed Paraffin-embedded Sections)

Image 1. Liver, Human: Formalin-Fixed, Paraffin-Embedded (FFPE)



Immunohistochemistry

Image 2. Anti-RASSF2 antibody IHC of human liver. Immunohistochemistry of formalin-fixed, paraffin-embedded tissue after heat-induced antigen retrieval. Antibody concentration 3.75 ug/ml.



Immunohistochemistry (Formalin-fixed Paraffin-embedded Sections)

Image 3. Spleen, Human: Formalin-Fixed, Paraffin-Embedded (FFPE)

Please check the [product details page](#) for more images. Overall 4 images are available for ABIN462512.