

Datasheet for ABIN462517  
**anti-AAK1 antibody (C-Term)**

## 3 Images

[Go to Product page](#)

## Overview

Quantity:	0.05 mg
Target:	AAK1
Binding Specificity:	C-Term
Reactivity:	Human, Mouse, Rat
Host:	Rabbit
Clonality:	Polyclonal
Conjugate:	This AAK1 antibody is un-conjugated
Application:	Western Blotting (WB), Immunohistochemistry (IHC), Immunohistochemistry (Paraffin-embedded Sections) (IHC (p))

## Product Details

Brand:	IHC-plus™
Isotype:	IgG
Purification:	Immunoaffinity purified

## Target Details

Target:	AAK1
Alternative Name:	AAK1 ( <a href="#">AAK1 Products</a> )
Background:	Name/Gene ID: AAK1 Subfamily: NAK Family: Protein Kinase

## Target Details

Synonyms: AAK1, Adaptor-associated kinase 1, AP2 associated kinase 1, KIAA1048

Gene ID: 22848

UniProt: [Q2M2I8](#)

## Application Details

Application Notes: Approved: IHC, IHC-P (5 µg/mL), WB (1 - 2 µg/mL)

Usage: Aak1 antibody can be used for detection of Aak1 by Western blot at 1-2 µg/mL

Comment: Target Species of Antibody: Human

Restrictions: For Research Use only

## Handling

Format: Liquid

Concentration: Lot specific

Buffer: PBS, 0.02 % sodium azide

Preservative: Sodium azide

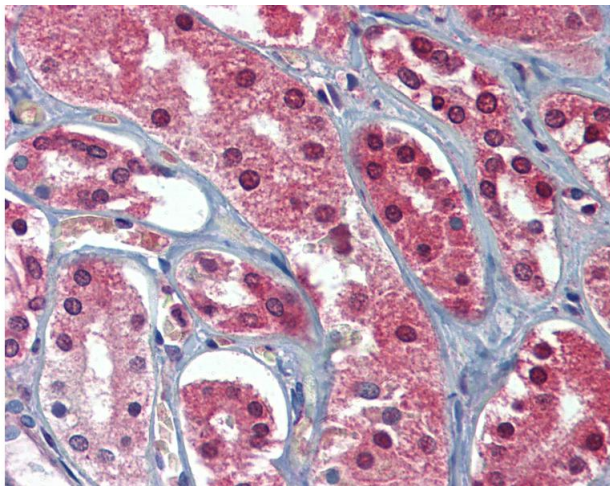
Precaution of Use: This product contains Sodium azide: a POISONOUS AND HAZARDOUS SUBSTANCE which should be handled by trained staff only.

Handling Advice: avoid freeze thaw cycles. Store undiluted.

Storage: 4 °C,-20 °C

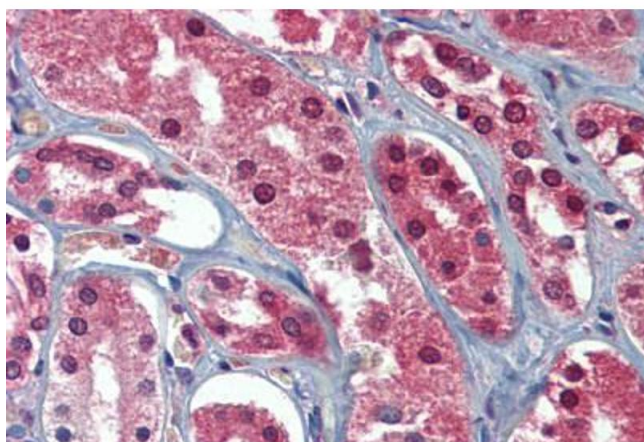
Storage Comment: Store at 4°C for 3 months and -20°C, stable for up to 1 year. Avoid repeated freeze-thaw cycles.

Expiry Date: 12 months



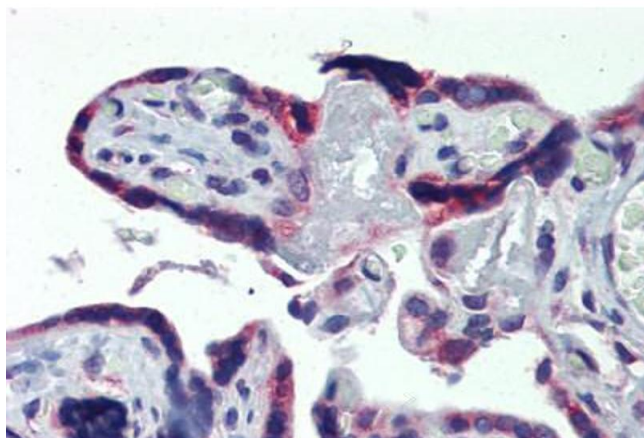
#### Immunohistochemistry

**Image 1.** Anti-AAK1 antibody IHC of human kidney. Immunohistochemistry of formalin-fixed, paraffin-embedded tissue after heat-induced antigen retrieval. Antibody concentration 5 ug/ml.



#### Immunohistochemistry (Formalin-fixed Paraffin-embedded Sections)

**Image 2.** Human Kidney: Formalin-Fixed, Paraffin-Embedded (FFPE)



#### Immunohistochemistry (Formalin-fixed Paraffin-embedded Sections)

**Image 3.** Human Placenta: Formalin-Fixed, Paraffin-Embedded (FFPE)