

Datasheet for ABIN462540
anti-METTL7A antibody (Internal Region)[Go to Product page](#)

3 Images

Overview

Quantity:	0.05 mg
Target:	METTL7A
Binding Specificity:	Internal Region
Reactivity:	Human, Mouse
Host:	Rabbit
Clonality:	Polyclonal
Conjugate:	This METTL7A antibody is un-conjugated
Application:	ELISA, Western Blotting (WB), Immunohistochemistry (IHC), Immunocytochemistry (ICC), Immunohistochemistry (Paraffin-embedded Sections) (IHC (p))

Product Details

Brand:	IHC-plus™
Isotype:	IgG
Specificity:	At least two isoforms of MettL7A are known to exist. This antibody is predicted to not cross-react with MettL7B.
Purification:	Immunoaffinity purified

Target Details

Target:	METTL7A
Alternative Name:	METTL7A (METTL7A Products)

Target Details

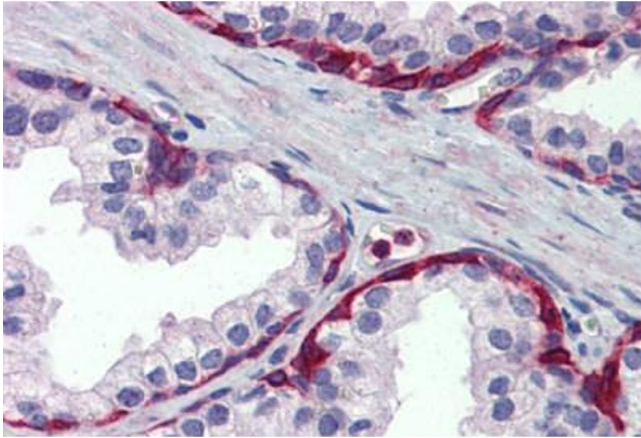
Background:	Name/Gene ID: METTL7A Synonyms: METTL7A, AAM-B, DKFZP586A0522, Methyltransferase like 7A, Protein AAM-B
Gene ID:	25840
UniProt:	Q9H8H3

Application Details

Application Notes:	Approved: ELISA, ICC (2 µg/mL), IHC, IHC-P (5 µg/mL), WB (2 - 4 µg/mL)
Comment:	Target Species of Antibody: Human
Restrictions:	For Research Use only

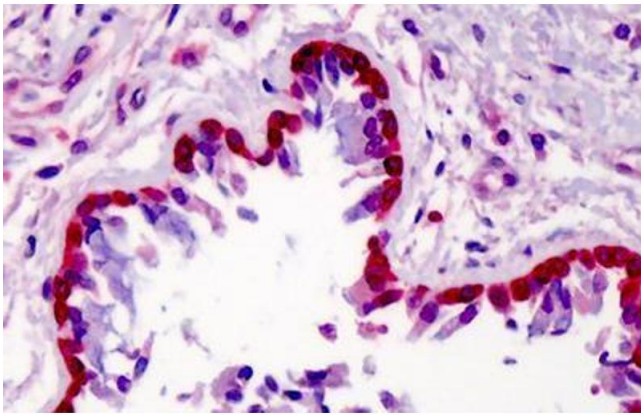
Handling

Format:	Liquid
Concentration:	Lot specific
Buffer:	PBS containing 0.02 % sodium azide
Preservative:	Sodium azide
Precaution of Use:	This product contains Sodium azide: a POISONOUS AND HAZARDOUS SUBSTANCE which should be handled by trained staff only.
Handling Advice:	avoid freeze thaw cycles. Store undiluted.
Storage:	4 °C,-20 °C
Storage Comment:	Store at 4°C for 3 months and -20°C, stable for up to 1 year. Avoid repeated freeze-thaw cycles.
Expiry Date:	12 months



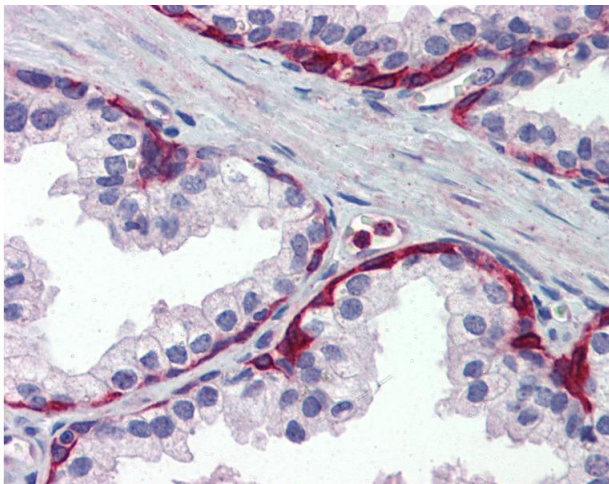
Immunohistochemistry (Formalin-fixed Paraffin-embedded Sections)

Image 1. Human Prostate: Formalin-Fixed, Paraffin-Embedded (FFPE)



Immunohistochemistry (Formalin-fixed Paraffin-embedded Sections)

Image 2. Human Lung: Formalin-Fixed, Paraffin-Embedded (FFPE)



Immunohistochemistry

Image 3. Anti-METTL7A antibody IHC of human prostate. Immunohistochemistry of formalin-fixed, paraffin-embedded tissue after heat-induced antigen retrieval. Antibody concentration 5 ug/ml.