

Datasheet for ABIN462556  
**anti-ZFYVE26 antibody (C-Term)**



[Go to Product page](#)

2 Images

### Overview

Quantity:	0.05 mg
Target:	ZFYVE26
Binding Specificity:	C-Term
Reactivity:	Human, Mouse, Rat
Host:	Rabbit
Clonality:	Polyclonal
Conjugate:	This ZFYVE26 antibody is un-conjugated
Application:	ELISA, Western Blotting (WB), Immunohistochemistry (IHC), Immunohistochemistry (Paraffin-embedded Sections) (IHC (p))

### Product Details

Brand:	IHC-plus™
Isotype:	IgG
Specificity:	Multiple isoforms of SPG15 are known to exist.
Purification:	Immunoaffinity purified

### Target Details

Target:	ZFYVE26
Alternative Name:	SPG15 / ZFYVE26 ( <a href="#">ZFYVE26 Products</a> )
Background:	Name/Gene ID: ZFYVE26

## Target Details

---

Synonyms: ZFYVE26, FYVE-CENT, Spastizin, KIAA0321, SPG15

Gene ID: 23503

UniProt: [Q68DK2](#)

## Application Details

---

Application Notes: Approved: ELISA, IHC, IHC-P (5 µg/mL), WB (0.5 - 1 µg/mL)

Comment: Target Species of Antibody: Human

Restrictions: For Research Use only

## Handling

---

Format: Liquid

Concentration: Lot specific

Buffer: PBS containing 0.02 % sodium azide

Preservative: Sodium azide

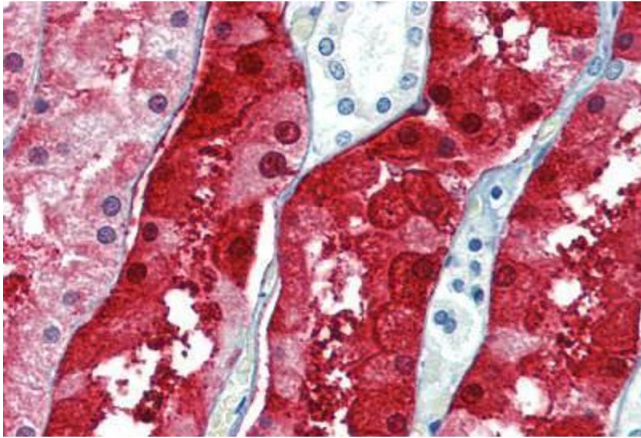
Precaution of Use: This product contains Sodium azide: a POISONOUS AND HAZARDOUS SUBSTANCE which should be handled by trained staff only.

Handling Advice: avoid freeze thaw cycles. Store undiluted.

Storage: 4 °C, -20 °C

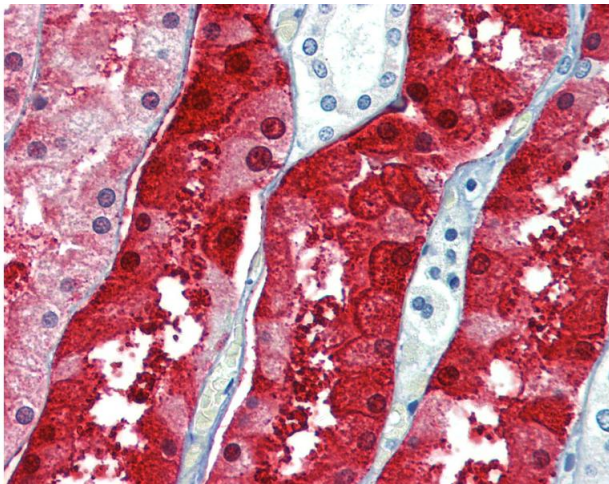
Storage Comment: Store at 4°C for 3 months and -20°C, stable for up to 1 year. Avoid repeated freeze-thaw cycles.

Expiry Date: 12 months



### Immunohistochemistry (Formalin-fixed Paraffin-embedded Sections)

**Image 1.** Human Kidney: Formalin-Fixed, Paraffin-Embedded (FFPE)



### Immunohistochemistry

**Image 2.** Anti-ZFYVE26 antibody IHC of human kidney. Immunohistochemistry of formalin-fixed, paraffin-embedded tissue after heat-induced antigen retrieval. Antibody concentration 5 ug/ml.