



[Go to Product page](#)

Datasheet for ABIN464968

## anti-CXCL6 antibody

### 3 Images

#### Overview

Quantity:	100 µg
Target:	CXCL6
Reactivity:	Human
Host:	Rabbit
Clonality:	Polyclonal
Conjugate:	This CXCL6 antibody is un-conjugated
Application:	ELISA, Western Blotting (WB), Neutralization (Neut)

#### Product Details

Immunogen:	E.coli derived recombinant Human GCP-2. Type of Immunogen: Cell extract
Specificity:	Human GCP-2
Purification:	Immunoaffinity purified

#### Target Details

Target:	CXCL6
Alternative Name:	CXCL6 ( <a href="#">CXCL6 Products</a> )
Background:	Name/Gene ID: CXCL6 Subfamily: Intercrine alpha Family: Intercrine

## Target Details

---

Synonyms: CXCL6, Chemokine alpha 3, GCP-2, GCP2, SCYB6, C-X-C motif chemokine 6, CKA-3, Small-inducible cytokine B6

Gene ID: 6372

UniProt: [P80162](#)

## Application Details

---

Application Notes: Approved: ELISA (0.5 - 2 µg/mL), Neut (2 - 5 µg/mL), WB

Usage: Neutralization: To yield one-half maximal inhibition [ND50] of the biological activity of hGCP-2 (100 ng/mL), a concentration of 2-5 µg/mL of this antibody is required. ELISA: To detect hGCP-2 by sandwich ELISA (using 100 µL/well antibody solution) a concentration of 0.5-2 µg/mL of this antibody is required. This antigen affinity purified antibody, in conjunction with Biotinylated Anti-Human GCP-2 (LS-C104349) as a detection antibody, allows the detection of at least 0.2-0.4 ng/well of recombinant hGCP-2. Western Blot: To detect hGCP-2 by Western Blot analysis this antibody can be used at a concentration of 0.1-0.2 µg/mL. Used in conjunction with compatible secondary reagents the detection limit for recombinant hGCP-2 is 1.5-3 ng/lane, under either reducing or non-reducing conditions.

Comment: Target Species of Antibody: Human

Restrictions: For Research Use only

## Handling

---

Format: Lyophilized

Reconstitution: Sterile water

Concentration: Lot specific

Buffer: Lyophilized from PBS, pH 7.2

Handling Advice: Avoid freeze/thaw cycles.

Storage: 4 °C, -20 °C

Storage Comment: Store Lyophilized at room temperature up to 1 month  
Reconstituted for up to 2 weeks at 2-8°C. Aliquot and freeze at -20°C for long term storage.  
Avoid freeze/thaw cycles.

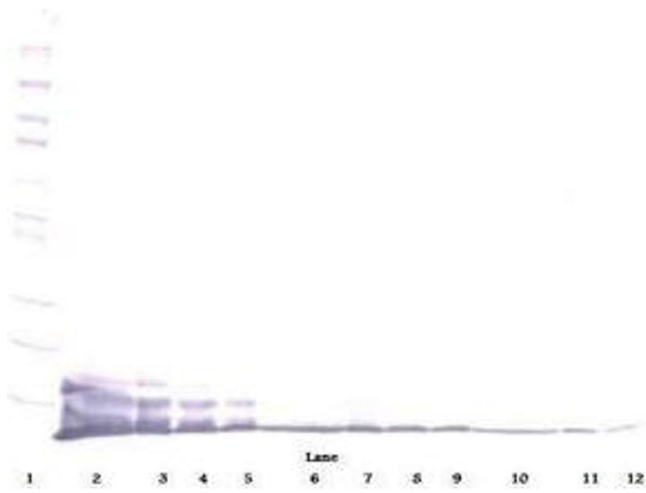


Image 1.

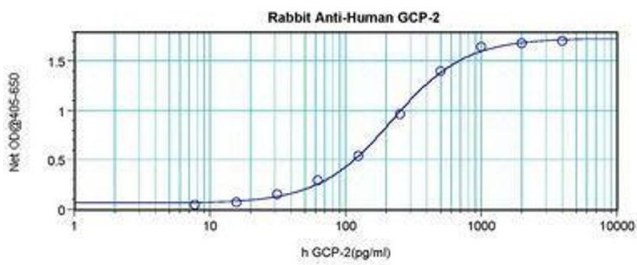


Image 2.

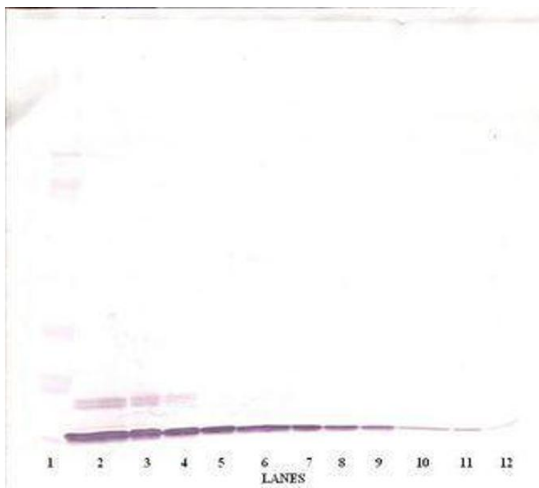


Image 3.