

Datasheet for ABIN464979
anti-CXCL1 antibody (Biotin)[Go to Product page](#)

2 Images

Overview

Quantity:	50 µg
Target:	CXCL1
Reactivity:	Human
Host:	Rabbit
Clonality:	Polyclonal
Conjugate:	This CXCL1 antibody is conjugated to Biotin
Application:	Western Blotting (WB), ELISA, Neutralization (Neut)

Product Details

Immunogen:	E.coli derived recombinant Human GRO/MGSA. Type of Immunogen: Cell extract
Specificity:	Human GRO/MGSA
Purification:	Immunoaffinity purified

Target Details

Target:	CXCL1
Alternative Name:	GRO / CXCL1 (CXCL1 Products)
Background:	Name/Gene ID: CXCL1 Subfamily: Interocrine alpha Family: Interocrine

Target Details

Synonyms: CXCL1, C-X-C motif chemokine 1, Fibroblast secretory protein, FSP, GRO1, GROa, Growth-regulated alpha protein, GRO-alpha(1-73), MGSA, MGSA-a, Small inducible cytokine b1, GRO, MGSA alpha, NAP-3, SCYB1

Gene ID: 2919

UniProt: [P09341](#)

Pathways: [Autophagy](#)

Application Details

Application Notes: Approved: ELISA (1 µg/mL), Neut, WB (0.1 - 0.2 µg/mL)

Usage: The applications listed have been tested for the unconjugated form of this product. Other forms have not been tested. ELISA: To detect Human GRO/MGSA by direct ELISA (using 100 µL/well antibody solution) a concentration of 0.25-1 µg/mL of this antibody is required. This biotinylated polyclonal antibody, in conjunction with compatible secondary reagents, allows the detection of at least 0.2-0.4 ng/well of recombinant Human GRO/MGSA. To detect Human GRO/MGSA by sandwich ELISA (using 100 µL/well antibody solution) a concentration of 0.25-1 µg/mL of this antibody is required. This biotinylated polyclonal antibody, in conjunction with Polyclonal Anti-Human GRO/MGSA (LS-C104351) as a capture antibody, allows the detection of at least 0.2-0.4 ng/well of recombinant Human GRO/MGSA. Western Blot: To detect Human GRO/MGSA by Western Blot analysis this antibody can be used at a concentration of 0.1-0.2 µg/mL. Used in conjunction with compatible secondary reagents the detection limit for recombinant Human GRO/MGSA is 1.5-3 ng/lane, under either reducing or non-reducing conditions.

Comment: Target Species of Antibody: Human

Restrictions: For Research Use only

Handling

Format: Lyophilized

Reconstitution: Sterile PBS containing 0.1 % BSA

Concentration: Lot specific

Buffer: Lyophilized from PBS, pH 7.2

Handling

Handling Advice:	Avoid freeze/thaw cycles.
Storage:	4 °C,-20 °C
Storage Comment:	Store Lyophilized at room temperature up to 1 month Reconstituted for up to 2 weeks at 2-8°C. Aliquot and freeze at -20°C for long term storage. Avoid freeze/thaw cycles.

Images

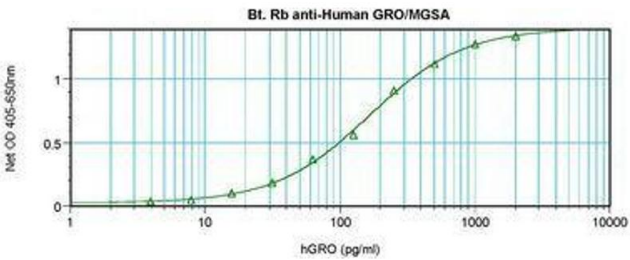


Image 1.

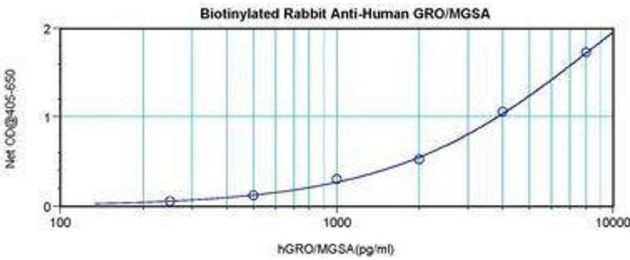


Image 2.