

Datasheet for ABIN465001

## anti-CCL2 antibody

### 4 Images



[Go to Product page](#)

### Overview

Quantity:	100 µg
Target:	CCL2
Reactivity:	Mouse
Host:	Rabbit
Clonality:	Polyclonal
Conjugate:	This CCL2 antibody is un-conjugated
Application:	Western Blotting (WB), ELISA, Neutralization (Neut)

### Product Details

Immunogen:	E.coli derived recombinant Murine JE. Type of Immunogen: Cell extract
Specificity:	Mouse JE (MCP-1)
Purification:	Immunoaffinity purified

### Target Details

Target:	CCL2
Alternative Name:	CCL2 / MCP-1 ( <a href="#">CCL2 Products</a> )
Background:	Name/Gene ID: CCL2 Subfamily: Intercrine beta Family: Intercrine

## Target Details

---

Synonyms: CCL2, C-C motif chemokine 2, Chemokine (C-C motif) ligand 2, GDCF-2, HC11, HSMCR30, MCP1, SCYA2, Small-inducible cytokine A2, Monocyte secretory protein JE, MCAF, MCP-1, Monocyte chemotactic protein 1, SMC-CF

Gene ID: 6347

UniProt: [P13500](#)

Pathways: [Cellular Response to Molecule of Bacterial Origin](#), [Positive Regulation of Immune Effector Process](#), [ER-Nucleus Signaling](#), [Unfolded Protein Response](#), [The Global Phosphorylation Landscape of SARS-CoV-2 Infection](#)

## Application Details

---

Application Notes: Approved: ELISA (0.5 - 2 µg/mL), Neut (4 - 6 µg/mL), WB

Usage: IHC: Stained colchicine injected mouse brain (including caudate putamen) tissue. Primary antibody was incubated at 1.0 µg/mL overnight at 4 °C, followed by a peroxidase conjugated secondary antibody and then a fluorescein Tyramide Signal Amplification (TSA) reagent.

Comment: Target Species of Antibody: Mouse

Restrictions: For Research Use only

## Handling

---

Format: Lyophilized

Reconstitution: Sterile water

Concentration: Lot specific

Buffer: Lyophilized from PBS, pH 7.2

Handling Advice: Avoid freeze/thaw cycles.

Storage: 4 °C,-20 °C

Storage Comment: Store Lyophilized at room temperature up to 1 month  
Reconstituted for up to 2 weeks at 2-8°C. Aliquot and freeze at -20°C for long term storage.  
Avoid freeze/thaw cycles.

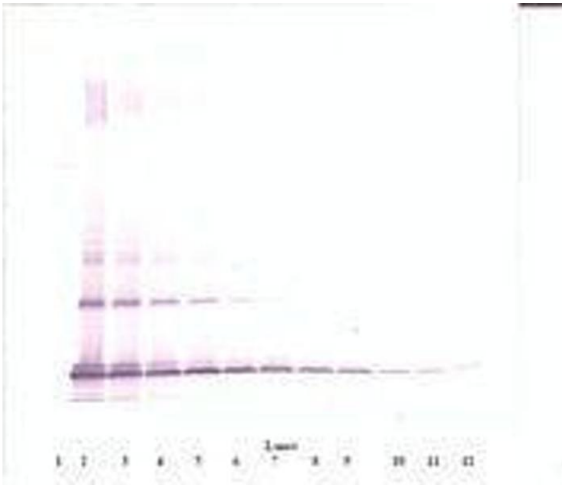


Image 1.

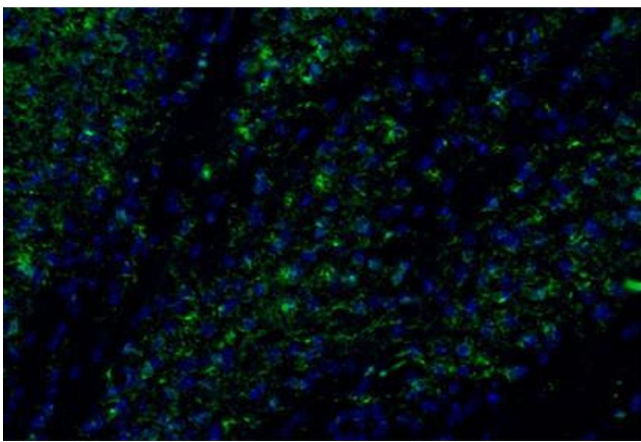


Image 2.

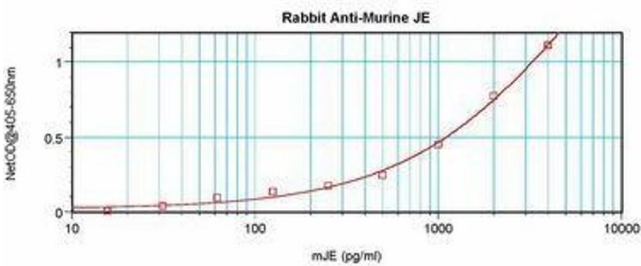


Image 3.

Please check the [product details page](#) for more images. Overall 4 images are available for ABIN465001.