



Datasheet for ABIN465317  
**anti-TGFB1 antibody**



[Go to Product page](#)

3 Images

Overview

Quantity:	500 µg
Target:	TGFB1
Reactivity:	Human, Mouse, Monkey
Host:	Mouse
Clonality:	Monoclonal
Conjugate:	This TGFB1 antibody is un-conjugated
Application:	Western Blotting (WB), ELISA

Product Details

Immunogen:	Hi-5 Insect cell derived recombinant Human TGF-beta1.
Isotype:	IgG1
Specificity:	Human TGF-beta1
Purification:	Protein G purified

Target Details

Target:	TGFB1
Alternative Name:	TGFB1 / TGF Beta 1 ( <a href="#">TGFB1 Products</a> )
Background:	Name/Gene ID: TGFB1 Family: TGF beta

Synonyms: TGFB1, CED, DPD1, Diaphyseal dysplasia 1, LAP, Latency-associated peptide, TGF

## Target Details

---

Beta, TGFbeta, TGF-beta 1 protein, TGF-beta-1, TGFB

Gene ID: 7040

UniProt: [P01137](#)

Pathways: [EGFR Signaling Pathway](#), [Dopaminergic Neurogenesis](#), [Cellular Response to Molecule of Bacterial Origin](#), [Glycosaminoglycan Metabolic Process](#), [Regulation of Leukocyte Mediated Immunity](#), [Regulation of Muscle Cell Differentiation](#), [Positive Regulation of Immune Effector Process](#), [Cell-Cell Junction Organization](#), [Production of Molecular Mediator of Immune Response](#), [Ribonucleoside Biosynthetic Process](#), [Skeletal Muscle Fiber Development](#), [Regulation of Carbohydrate Metabolic Process](#), [Protein targeting to Nucleus](#), [Autophagy](#), [Cancer Immune Checkpoints](#)

## Application Details

---

Application Notes: Approved: ELISA, WB

Usage: Immunohistochemistry: This antibody stained formalin-fixed paraffin-embedded sections of human pancreas adenocarcinoma tissue. The recommended concentration is 5 µg/mL with an overnight incubation at 4 °C. An HRP-labeled polymer detection system was used with an alcohol-soluble AEC chromogen. Heat induced antigen retrieval with a pH 6 sodium citrate buffer is recommended. Optimal concentrations and conditions may vary. Tissue samples were provided by the Cooperative Human Tissue Network, which is funded by the National Cancer Institute. \*Additional Immunostaining data available. Please contact Tech Support for information. ELISA: In a sandwich ELISA (assuming 100 µL/well), a concentration of 4-8 µg/mL of this antibody will detect at least 100 pg/mL of recombinant Human TGF-beta1 when used in conjunction with compatible secondary reagents. Western Blot: To detect Human TGF-beta1 by Western Blot analysis this antibody can be used at a concentration of 2-4 µg/mL. Used in conjunction with compatible secondary reagents the detection limit for recombinant Human TGF-beta1 is 2-4 ng/lane, under non-reducing conditions. In a dot blot, a 1:500 dilution of this antibody exhibited complete cross reactivity with Human TGF-beta2 and TGF-beta3 isotypes. Reduced cross reactivity was shown at a 1:1000 dilution.

Comment: Target Species of Antibody: Human

Restrictions: For Research Use only

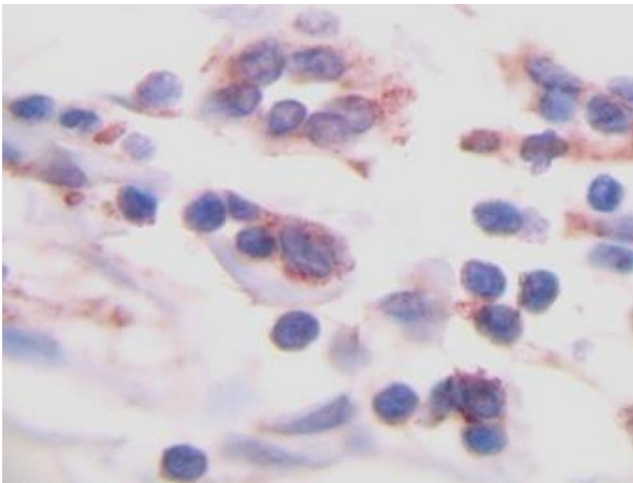
## Handling

---

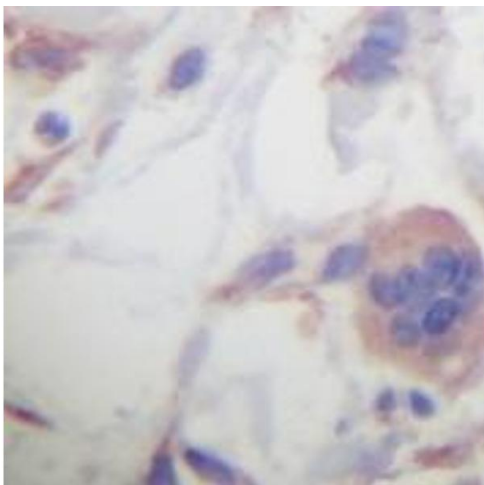
Format:	Lyophilized
Reconstitution:	Sterile water
Concentration:	Lot specific
Buffer:	Lyophilized from PBS
Handling Advice:	Avoid freeze/thaw cycles.
Storage:	4 °C,-20 °C
Storage Comment:	Store Lyophilized at room temperature up to 1 month Reconstituted for up to 2 weeks at 2-8°C. Aliquot and freeze at -20°C for long term storage. Avoid freeze/thaw cycles.

## Images

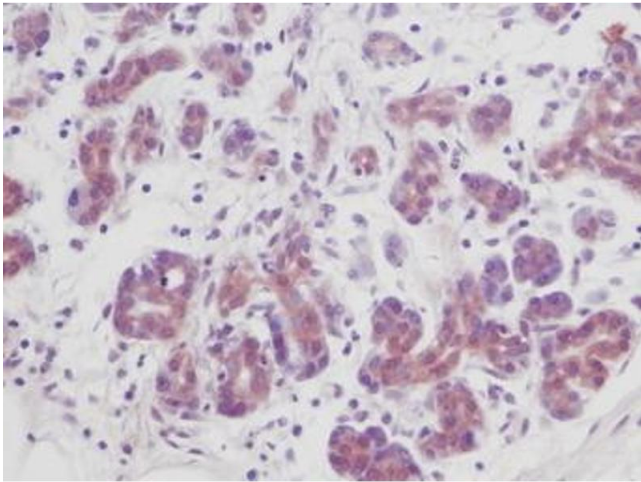
---



**Image 1.**



**Image 2.**



**Image 3.**