

Datasheet for ABIN465357

anti-IL-8 antibody

4 Images

[Go to Product page](#)

Overview

Quantity:	100 µg
Target:	IL-8 (IL8)
Reactivity:	Human
Host:	Rabbit
Clonality:	Polyclonal
Conjugate:	This IL-8 antibody is un-conjugated
Application:	Western Blotting (WB), ELISA, Neutralization (Neut)

Product Details

Immunogen:	E.coli derived recombinant Human IL-8.
	Type of Immunogen: Cell extract
Specificity:	Human IL-8
Purification:	Immunoaffinity purified

Target Details

Target:	IL-8 (IL8)
Alternative Name:	CXCL8 (IL8 Products)
Background:	Name/Gene ID: CXCL8 Subfamily: Interocrine alpha Family: Interocrine

Target Details

Synonyms: CXCL8, 3-10C, AMCF-I, B-ENAP, C-X-C motif chemokine 8, GCP-1, IL-8, IL8, Interleukin-8, K60, LECT, GCP1, LUCT, NAF, NAP1, Neutrophil-activating factor, Interleukin 8, Protein 3-10C, MDNCF, TSG-1, Emotakin, LYAP, MONAP, NAP-1, SCYB8, T-cell chemotactic factor

Gene ID: 3576

Pathways: [TLR Signaling](#), [Cellular Response to Molecule of Bacterial Origin](#), [Regulation of G-Protein Coupled Receptor Protein Signaling](#), [ER-Nucleus Signaling](#), [Hepatitis C](#), [Autophagy](#)

Application Details

Application Notes: Approved: ELISA (0.5 - 2 µg/mL), Neut, WB (0.1 - 0.2 µg/mL)

Usage: Immunohistochemistry: This antibody stained formalin-fixed, paraffin-embedded sections of normal human skin. The recommended concentrations are 1 µg/mL for two hours at room temperature or 0.25 µg/mL overnight at 4 °C. An HRP-labeled polymer detection system was used with a non-alcohol soluble AEC chromogen and a proteinase K antigen retrieval. Optimal concentrations and conditions may vary. . Neutralization: To yield one-half maximal inhibition [ND] of the biological activity of Human IL-8 (100 ng/mL), a concentration of 2-3 µg/mL of this antibody is required. ELISA: To detect Human IL-8 by sandwich ELISA (using 100 µL/well antibody solution) a concentration of 0.5-2 µg/mL of this antibody is required. This antigen affinity purified antibody, in conjunction with Biotinylated Anti-Human IL-8 (LS-C104790) as a detection antibody, allows the detection of at least 0.2-0.4 ng/well of recombinant Human IL-8. Western Blot: To detect Human IL-8 by Western Blot analysis this antibody can be used at a concentration of 0.1-0.2 µg/mL. When used in conjunction with compatible secondary reagents, the detection limit for recombinant Human IL-8 is 1.5-3 ng/lane, under either reducing or non-reducing conditions.

Comment: Target Species of Antibody: Human

Restrictions: For Research Use only

Handling

Format: Lyophilized

Reconstitution: Sterile water

Concentration: Lot specific

Handling

Buffer:	Lyophilized from PBS, pH 7.2
Storage:	4 °C,-20 °C
Storage Comment:	Store Lyophilized at room temperature up to 1 month Reconstituted for up to 2 weeks at 2-8°C. Aliquot and freeze at -20°C for long term storage. Avoid freeze/thaw cycles.

Images

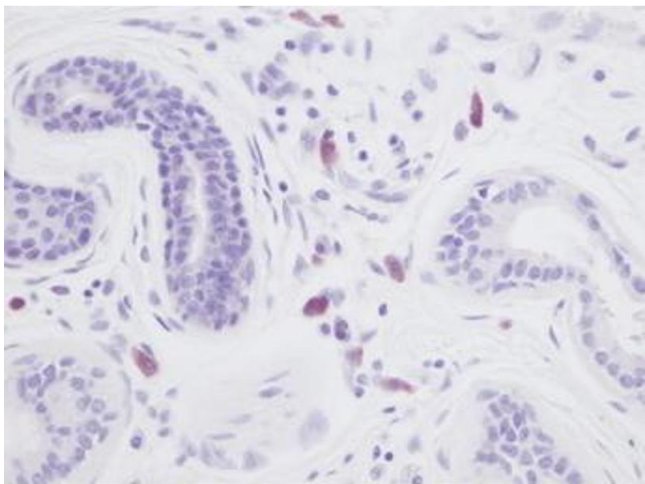


Image 1.

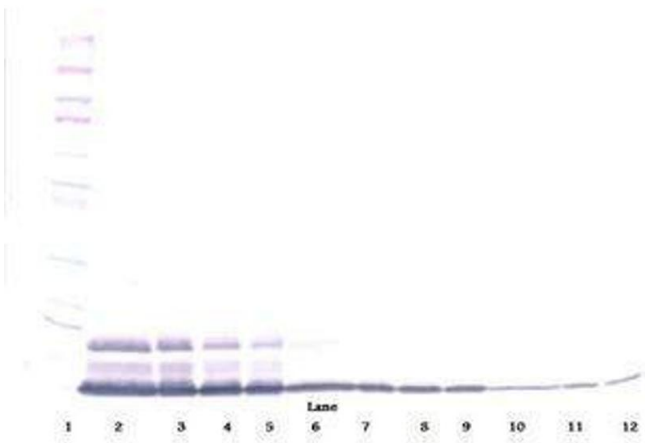
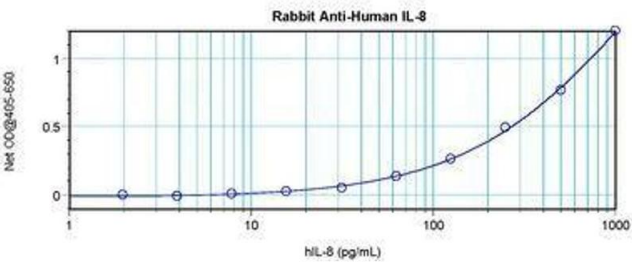


Image 2.

Image 3.



Please check the [product details page](#) for more images. Overall 4 images are available for ABIN465357.