

Datasheet for ABIN465512
anti-XCL1 antibody (Biotin)[Go to Product page](#)

2 Images

Overview

Quantity:	50 µg
Target:	XCL1
Reactivity:	Human
Host:	Rabbit
Clonality:	Polyclonal
Conjugate:	This XCL1 antibody is conjugated to Biotin
Application:	Western Blotting (WB), ELISA, Neutralization (Neut)

Product Details

Immunogen:	E.coli derived recombinant Human Lymphotactin.
	Type of Immunogen: Cell extract
Specificity:	Human Lymphotactin
Purification:	Immunoaffinity purified

Target Details

Target:	XCL1
Alternative Name:	XCL1 / Lymphotactin (XCL1 Products)
Background:	Name/Gene ID: XCL1 Subfamily: Interocrine gamma Family: Interocrine

Target Details

Synonyms: XCL1, ATAC, C motif chemokine 1, Chemokine (C motif) ligand 1, Cytokine SCM-1, Cytokine scm, LPTN, SCM-1, SCM-1-alpha, SCM-1a, SCM1, SCYC1, Scyc2, Single cysteine motif 1a, Lymphotoxin, Xc chemokine ligand, LTN, Lymphotoxin, SCM1A, Small-inducible cytokine C1, XC chemokine ligand 1

Gene ID: 6375

UniProt: [P47992](#)

Pathways: [Regulation of Leukocyte Mediated Immunity](#), [Positive Regulation of Immune Effector Process](#), [Production of Molecular Mediator of Immune Response](#), [Activated T Cell Proliferation](#)

Application Details

Application Notes: Approved: ELISA (1 µg/mL), Neut, WB (0.1 - 0.2 µg/mL)

Usage: The applications listed have been tested for the unconjugated form of this product. Other forms have not been tested. ELISA: To detect hLymphotoxin by direct ELISA (using 100 µL/well antibody solution) a concentration of 0.25-1 µg/mL of this antibody is required. This biotinylated polyclonal antibody, in conjunction with compatible secondary reagents, allows the detection of at least 0.2-0.4 ng/well of recombinant hLymphotoxin. To detect hLymphotoxin by sandwich ELISA (using 100 µL/well antibody solution) a concentration of 0.25-1 µg/mL of this antibody is required. This biotinylated polyclonal antibody, in conjunction with Polyclonal Anti-Human Lymphotoxin (LS-C104661) as a capture antibody, allows the detection of at least 0.2-0.4 ng/well of recombinant hLymphotoxin. Western Blot: To detect hLymphotoxin by Western Blot analysis this antibody can be used at a concentration of 0.1-0.2 µg/mL. Used in conjunction with compatible secondary reagents the detection limit for recombinant hLymphotoxin is 1.5-3 ng/lane, under either reducing or non-reducing conditions.

Comment: Target Species of Antibody: Human

Restrictions: For Research Use only

Handling

Format: Lyophilized

Reconstitution: Sterile PBS containing 0.1 % BSA

Concentration: Lot specific

Handling

Buffer:	Lyophilized from PBS, pH 7.2
Handling Advice:	Avoid freeze/thaw cycles.
Storage:	4 °C,-20 °C
Storage Comment:	Store Lyophilized at room temperature up to 1 month Reconstituted for up to 2 weeks at 2-8°C. Aliquot and freeze at -20°C for long term storage. Avoid freeze/thaw cycles.

Images

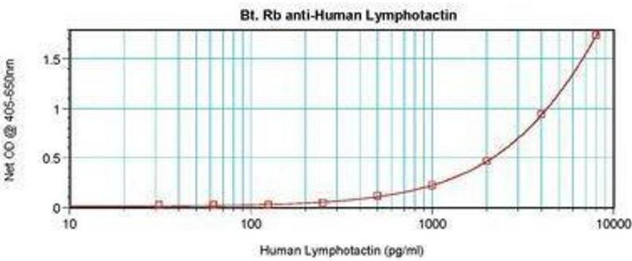


Image 1.

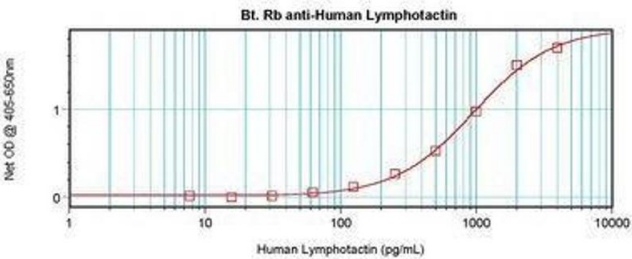


Image 2.