

Datasheet for ABIN465703

anti-CXCL12 antibody

3 Images

[Go to Product page](#)

Overview

Quantity:	100 µg
Target:	CXCL12
Reactivity:	Human
Host:	Goat
Clonality:	Polyclonal
Conjugate:	This CXCL12 antibody is un-conjugated
Application:	Western Blotting (WB), ELISA

Product Details

Immunogen:	E.coli derived recombinant Human SDF-1beta.
	Type of Immunogen: Cell extract
Specificity:	Human SDF-1beta
Purification:	Immunoaffinity purified

Target Details

Target:	CXCL12
Alternative Name:	SDF-1 / CXCL12 (CXCL12 Products)
Background:	Name/Gene ID: CXCL12
	Subfamily: Interocrine alpha
	Family: Interocrine

Target Details

Synonyms: CXCL12, C-X-C motif chemokine 12, HIRH, IRH, SDF-1, SDF-1b, SDF1A, SDF1B, TPAR1, TLSF-a, TLSF-b, SDF-1a, SDF1, Sdf1alpha, Stromal cell-derived factor 1, TLSF, HSDF-1, PBSF, SCYB12

Gene ID: 6387

UniProt: [P48061](#)

Pathways: [Regulation of Cell Size](#), [CXCR4-mediated Signaling Events](#), [Negative Regulation of intrinsic apoptotic Signaling](#)

Application Details

Application Notes: Approved: ELISA (0.5 - 2 µg/mL), WB (0.1 - 0.2 µg/mL)

Usage: ELISA: To detect Human SDF-1beta by sandwich ELISA (using 100 µL/well antibody solution) a concentration of 0.5-2 µg/mL of this antibody is required. This antigen affinity purified antibody, in conjunction with Biotinylated Anti-Human SDF-1beta (LS-C104644) as a detection antibody, allows the detection of at least 0.2-0.4 ng/well of recombinant Human SDF-1beta. Western Blot: To detect Human SDF-1beta by Western Blot analysis this antibody can be used at a concentration of 0.1-0.2 µg/mL. When used in conjunction with compatible secondary reagents, the detection limit for recombinant Human SDF-1beta is 1.5-3 ng/lane, under either reducing or non-reducing conditions.

Comment: Target Species of Antibody: Human

Restrictions: For Research Use only

Handling

Format: Lyophilized

Reconstitution: Sterile water

Concentration: Lot specific

Buffer: Lyophilized from PBS, pH 7.2

Handling Advice: Avoid freeze/thaw cycles.

Storage: 4 °C,-20 °C

Storage Comment: Store Lyophilized at room temperature up to 1 month

Handling

Reconstituted for up to 2 weeks at 2-8°C. Aliquot and freeze at -20°C for long term storage.
Avoid freeze/thaw cycles.

Images

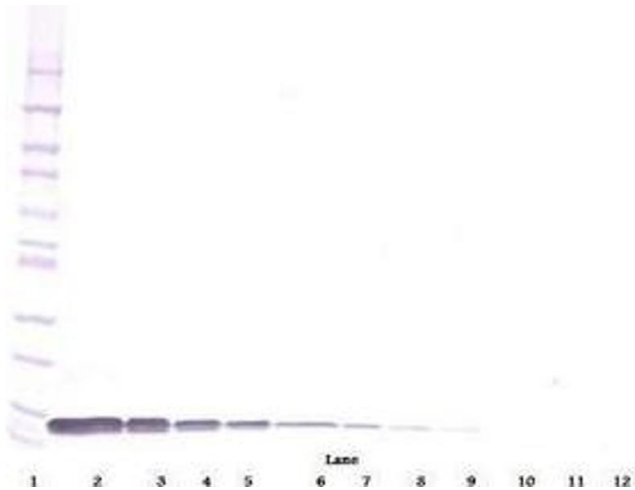


Image 1.

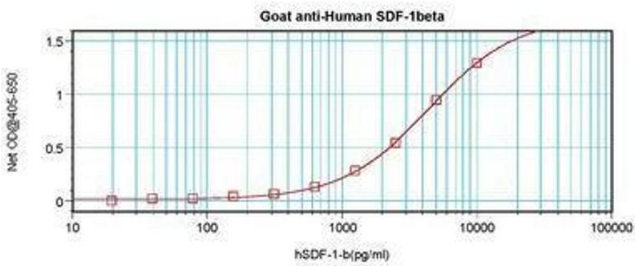


Image 2.

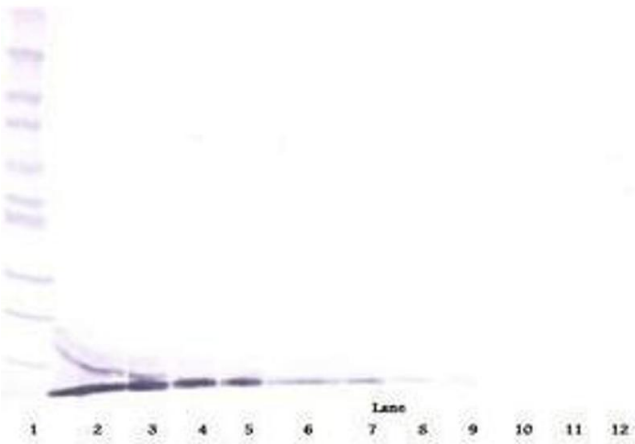


Image 3.