

Datasheet for ABIN465708

anti-Nerve Growth Factor antibody (Biotin)**2** Images[Go to Product page](#)

Overview

| | |
|--------------|---|
| Quantity: | 50 µg |
| Target: | Nerve Growth Factor (NGF) |
| Reactivity: | Human |
| Host: | Rabbit |
| Clonality: | Polyclonal |
| Conjugate: | This Nerve Growth Factor antibody is conjugated to Biotin |
| Application: | Western Blotting (WB), ELISA, Neutralization (Neut) |

Product Details

| | |
|---------------|--|
| Immunogen: | E.coli derived recombinant Human beta-NGF. |
| | Type of Immunogen: Cell extract |
| Specificity: | Human beta-NGF |
| Purification: | Immunoaffinity purified |

Target Details

| | |
|-------------------|---------------------------------------|
| Target: | Nerve Growth Factor (NGF) |
| Alternative Name: | NGF (NGF Products) |
| Background: | Name/Gene ID: NGF Family: NGF Beta |

Target Details

| | |
|-----------|--|
| | Synonyms: NGF, Beta-nerve growth factor, ProNGF, Beta-NGF, HSAN5, NGFB |
| Gene ID: | 4803 |
| UniProt: | P01138 |
| Pathways: | Regulation of Cell Size |

Application Details

| | |
|--------------------|---|
| Application Notes: | Approved: ELISA (1 µg/mL), Neut, WB (0.1 - 0.2 µg/mL) Usage: The applications listed have been tested for the unconjugated form of this product. Other forms have not been tested. ELISA: To detect Human beta-NGF by direct ELISA (using 100 µL/well antibody solution) a concentration of 0.25-1 µg/mL of this antibody is required. This biotinylated polyclonal antibody, in conjunction with compatible secondary reagents, allows the detection of at least 0.2-0.4 ng/well of recombinant Human beta-NGF. To detect Human beta-NGF by sandwich ELISA (using 100 µL/well antibody solution) a concentration of 0.25-1 µg/mL of this antibody is required. This biotinylated polyclonal antibody, in conjunction with Polyclonal Anti-Human beta-NGF (LS-C104703) as a capture antibody, allows the detection of at least 0.2-0.4 ng/well of recombinant Human beta-NGF. Western Blot: To detect Human beta-NGF by Western Blot analysis this antibody can be used at a concentration of 0.1-0.2 µg/mL. When used in conjunction with compatible secondary reagents, the detection limit for recombinant Human beta-NGF is 1.5-3 ng/lane, under either reducing or non-reducing conditions. |
| Comment: | Target Species of Antibody: Human |
| Restrictions: | For Research Use only |

Handling

| | |
|------------------|----------------------------------|
| Format: | Lyophilized |
| Reconstitution: | Sterile PBS containing 0.1 % BSA |
| Concentration: | Lot specific |
| Buffer: | Lyophilized from PBS, pH 7.2 |
| Handling Advice: | Avoid freeze/thaw cycles. |
| Storage: | 4 °C, -20 °C |

Handling

| | |
|------------------|--|
| Storage Comment: | Store Lyophilized at room temperature up to 1 month |
| | Reconstituted for up to 2 weeks at 2-8°C. Aliquot and freeze at -20°C for long term storage. |
| | Avoid freeze/thaw cycles. |

Images

Image 1.

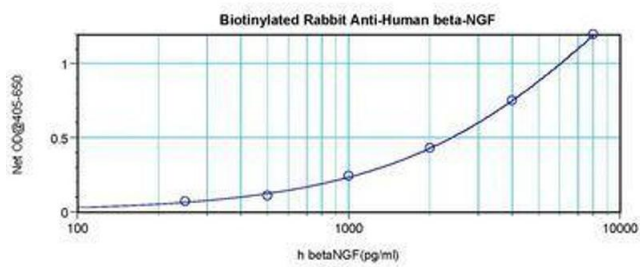


Image 2.

