

Datasheet for ABIN465752  
**anti-CXCL2 antibody (Biotin)**[Go to Product page](#)

## 2 Images

## Overview

Quantity:	50 µg
Target:	CXCL2
Reactivity:	Rat
Host:	Rabbit
Clonality:	Polyclonal
Conjugate:	This CXCL2 antibody is conjugated to Biotin
Application:	Western Blotting (WB), ELISA, Neutralization (Neut)

## Product Details

Immunogen:	E.coli derived recombinant Rat GRObeta/MIP-2.
	Type of Immunogen: Cell extract
Specificity:	Rat GRObeta/MIP-2
Purification:	Immunoaffinity purified

## Target Details

Target:	CXCL2
Alternative Name:	MIP2 / GRO2 / CXCL2 ( <a href="#">CXCL2 Products</a> )
Background:	Name/Gene ID: CXCL2
	Subfamily: Interocrine alpha
	Family: Interocrine

## Target Details

Synonyms: CXCL2, C-X-C motif chemokine 2, CINC-2a, GROb, Growth-regulated protein beta, MIP-2a, MIP2-alpha, MGSA-b, MIP-2, SCYB2, MGSA beta, MIP2, Gro-beta, GRO2, GRO2 oncogene, MIP2A

Gene ID: 2920

UniProt: [P19875](#)

Pathways: [Cellular Response to Molecule of Bacterial Origin](#)

## Application Details

Application Notes: Approved: ELISA (1 µg/mL), Neut, WB (0.1 - 0.2 µg/mL)

Usage: The applications listed have been tested for the unconjugated form of this product. Other forms have not been tested. ELISA: To detect Rat GRO-beta/MIP-2 by direct ELISA (using 100 µL/well antibody solution) a concentration of 0.25-1 µg/mL of this antibody is required. This biotinylated polyclonal antibody, in conjunction with compatible secondary reagents, allows the detection of at least 0.2-0.4 ng/well of recombinant Rat GRO-beta/MIP-2.. To detect Rat GRO-beta/MIP-2 by sandwich ELISA (using 100 µL/well antibody solution) a concentration of 0.25-1 µg/mL of this antibody is required. This biotinylated polyclonal antibody, in conjunction with Polyclonal Anti-Rat GRO-beta/MIP-2 (LS-C104776) as a capture antibody, allows the detection of at least 0.2-0.4 ng/well of recombinant Rat GRO-beta/MIP-2. Western Blot: To detect Rat GRO-beta/MIP-2 by Western Blot analysis this antibody can be used at a concentration of 0.1-0.2 µg/mL. Used in conjunction with compatible secondary reagents the detection limit for recombinant Rat GRO-beta/MIP-2 is 1.5-3 ng/lane, under either reducing or non-reducing conditions.

Comment: Target Species of Antibody: Rat

Restrictions: For Research Use only

## Handling

Format: Lyophilized

Reconstitution: Sterile PBS containing 0.1 % BSA

Concentration: Lot specific

Buffer: Lyophilized from PBS, pH 7.2

Handling

Handling Advice:	Avoid freeze/thaw cycles.
Storage:	4 °C,-20 °C
Storage Comment:	Store Lyophilized at room temperature up to 1 month Reconstituted for up to 2 weeks at 2-8°C. Aliquot and freeze at -20°C for long term storage. Avoid freeze/thaw cycles.

Images

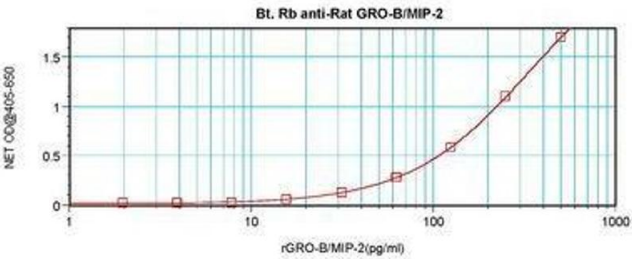


Image 1.

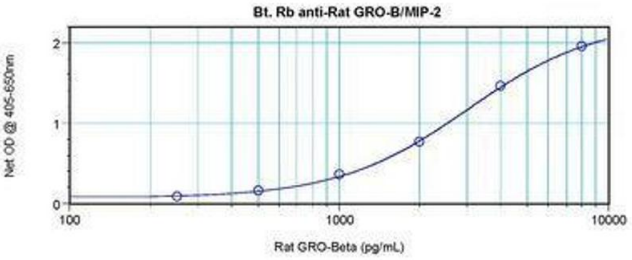


Image 2.