

Datasheet for ABIN465802  
**anti-KIT Ligand antibody (Biotin)**[Go to Product page](#)

## 2 Images

## Overview

Quantity:	50 µg
Target:	KIT Ligand (KITLG)
Reactivity:	Mouse
Host:	Rabbit
Clonality:	Polyclonal
Conjugate:	This KIT Ligand antibody is conjugated to Biotin
Application:	Western Blotting (WB), ELISA, Neutralization (Neut)

## Product Details

Immunogen:	E.coli derived recombinant Murine SCF.
	Type of Immunogen: Cell extract
Specificity:	Mouse SCF
Purification:	Immunoaffinity purified

## Target Details

Target:	KIT Ligand (KITLG)
Alternative Name:	KITLG / SCF ( <a href="#">KITLG Products</a> )
Background:	Name/Gene ID: KITLG
	Synonyms: KITLG, C-Kit ligand, KIT ligand, Kitl, KL-1, SHEP7, SF, Steel factor, Stem cell factor,

## Target Details

	SCF, FPH2, Mast cell growth factor, MGF
Gene ID:	4254
UniProt:	<a href="#">P21583</a>
Pathways:	<a href="#">RTK Signaling</a> , <a href="#">Fc-epsilon Receptor Signaling Pathway</a> , <a href="#">EGFR Signaling Pathway</a> , <a href="#">Neurotrophin Signaling Pathway</a>

## Application Details

Application Notes:	Approved: ELISA (1 µg/mL), Neut, WB (0.1 - 0.2 µg/mL)  Usage: The applications listed have been tested for the unconjugated form of this product. Other forms have not been tested. ELISA: To detect mSCF by direct ELISA (using 100 µL/well antibody solution) a concentration of 0.25-1 µg/mL of this antibody is required. This biotinylated polyclonal antibody, in conjunction with compatible secondary reagents, allows the detection of at least 0.2-0.4 ng/well of recombinant mSCF. To detect mSCF by sandwich ELISA (using 100 µL/well antibody solution) a concentration of 0.25-1 µg/mL of this antibody is required. This biotinylated polyclonal antibody, in conjunction with Polyclonal Anti-Murine SCF (LS-C104783) as a capture antibody, allows the detection of at least 0.2-0.4 ng/well of recombinant mSCF. Western Blot: To detect mSCF by Western Blot analysis this antibody can be used at a concentration of 0.1-0.2 µg/mL. Used in conjunction with compatible secondary reagents the detection limit for recombinant mSCF is 1.5-3 ng/lane, under either reducing or non-reducing conditions.
Comment:	Target Species of Antibody: Mouse
Restrictions:	For Research Use only

## Handling

Format:	Lyophilized
Reconstitution:	Sterile PBS containing 0.1 % BSA
Concentration:	Lot specific
Buffer:	Lyophilized from PBS, pH 7.2
Handling Advice:	Avoid freeze/thaw cycles.
Storage:	4 °C, -20 °C

Handling

Storage Comment:	Store Lyophilized at room temperature up to 1 month
	Reconstituted for up to 2 weeks at 2-8°C. Aliquot and freeze at -20°C for long term storage.
	Avoid freeze/thaw cycles.

Images

Image 1.

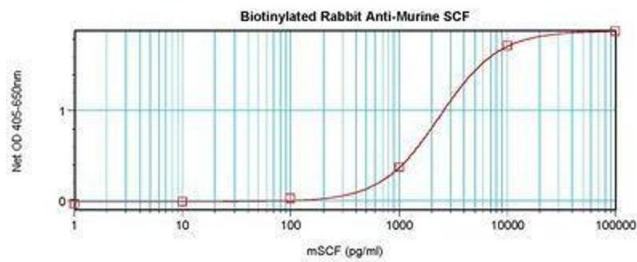


Image 2.

