



[Go to Product page](#)

Datasheet for ABIN465938
anti-CALML3 antibody (AA 1-150)

2 Images

Overview

| | |
|----------------------|---------------------------------------|
| Quantity: | 100 µg |
| Target: | CALML3 |
| Binding Specificity: | AA 1-150 |
| Reactivity: | Human |
| Host: | Mouse |
| Clonality: | Monoclonal |
| Conjugate: | This CALML3 antibody is un-conjugated |
| Application: | Western Blotting (WB), ELISA |

Product Details

| | |
|---------------|--|
| Immunogen: | CALML3 (AAH31889, 1 a.a. ~ 150 a.a) full-length recombinant protein with GST tag. MW of the GST tag alone is 26 KDa. Type of Immunogen: Recombinant protein |
| Clone: | 2A11 |
| Isotype: | IgG2b kappa |
| Purification: | Purified from ascites by Protein A |

Target Details

| | |
|-------------------|--|
| Target: | CALML3 |
| Alternative Name: | CALML3 (CALML3 Products) |

Target Details

| | |
|-------------|---|
| Background: | Name/Gene ID: CALML3 Synonyms: CALML3, Calmodulin-like 3, Calmodulin-like protein 3, CLP, CaM-like protein |
| Gene ID: | 810 |
| UniProt: | P27482 |
| Pathways: | Phototransduction |

Application Details

| | |
|--------------------|--|
| Application Notes: | Approved: ELISA, WB Usage: Western Blot (Transfected lysate) - positive control transfected 293T cell line. Sandwich ELISA (Recombinant protein). Not recommended for: IHC-P |
| Comment: | Target Species of Antibody: Human |
| Restrictions: | For Research Use only |

Handling

| | |
|------------------|--|
| Format: | Liquid |
| Concentration: | Lot specific |
| Buffer: | PBS, pH 7.4 |
| Handling Advice: | Aliquot to Avoid freeze/thaw cycles. |
| Storage: | -20 °C |
| Storage Comment: | Store at -20°C. Aliquot to avoid freeze/thaw cycles. |

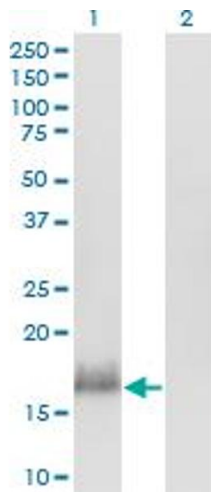


Image 1.

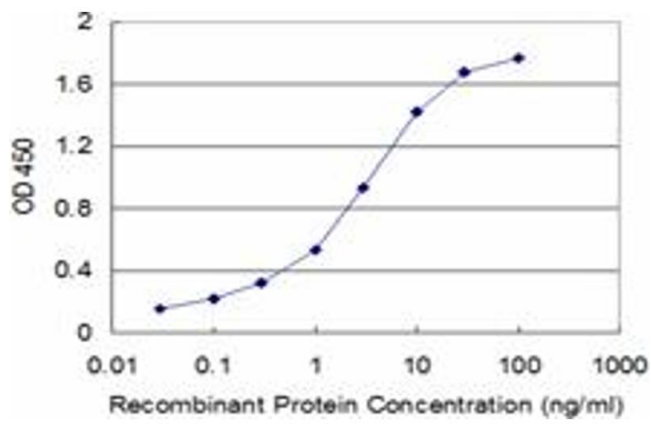


Image 2.