



[Go to Product page](#)

Datasheet for ABIN465974

anti-CLIC3 antibody (AA 137-237)

6 Images

Overview

Quantity:	100 µg
Target:	CLIC3
Binding Specificity:	AA 137-237
Reactivity:	Human
Host:	Mouse
Clonality:	Monoclonal
Application:	Western Blotting (WB), ELISA, Immunofluorescence (IF)

Product Details

Immunogen: CLIC3 (NP_004660, 137 a.a. ~ 237 a.a) partial recombinant protein with GST tag. MW of the GST tag alone is 26 KDa.

Type of Immunogen: Recombinant protein

Clone: 3F8

Isotype: IgG2a kappa

Purification: Purified from ascites by Protein A

Target Details

Target: CLIC3

Alternative Name: CLIC3 ([CLIC3 Products](#))

Background: Name/Gene ID: CLIC3

Target Details

Subfamily: Chloride channel - intracellular

Family: Ion Channel

Synonyms: CLIC3

Gene ID: 9022

NCBI Accession: [NP_004660](#)

UniProt: [O95833](#)

Application Details

Application Notes: Approved: ELISA, IF (15 µg/mL), WB

Usage: Western Blot (Cell lysate) - positive control A-431. Western Blot (Transfected lysate) - positive control transfected 293T cell line. Immunohistochemistry (Formalin/PFA-fixed paraffin-embedded sections, 3 µg/mL) - positive control human placenta. Immunohistochemistry (Formalin/PFA-fixed paraffin-embedded sections, 3 µg/mL) - positive control human tonsil. Immunofluorescence (15 µg/mL) - positive control HeLa cells. Sandwich ELISA (Recombinant protein).

Not recommended for: IHC-P

Comment: Target Species of Antibody: Human

Restrictions: For Research Use only

Handling

Format: Liquid

Concentration: Lot specific

Buffer: PBS, pH 7.4

Handling Advice: Aliquot to Avoid freeze/thaw cycles.

Storage: -20 °C

Storage Comment: Store at -20°C. Aliquot to avoid freeze/thaw cycles.

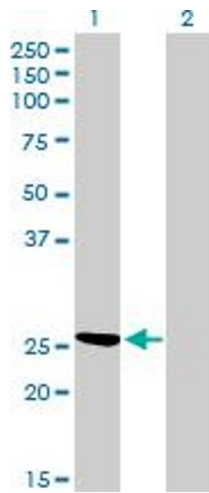


Image 1.

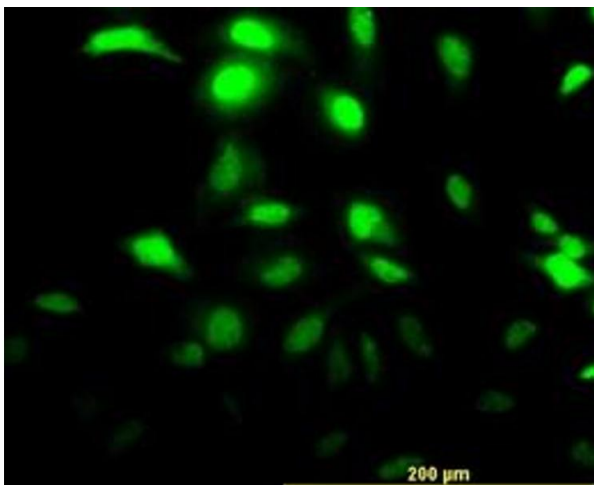


Image 2.

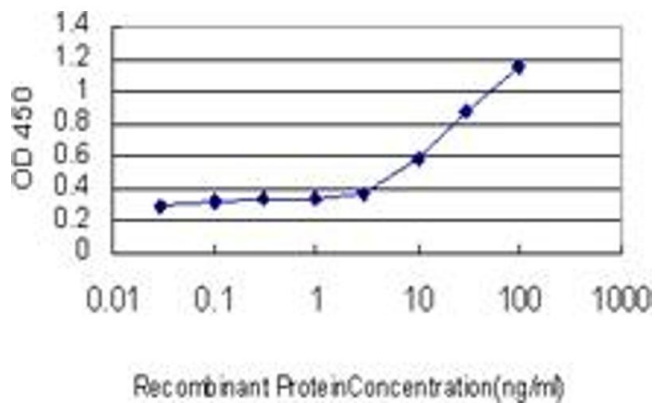


Image 3.

Please check the [product details page](#) for more images. Overall 6 images are available for ABIN465974.