

Datasheet for ABIN465994
anti-Exportin 2 antibody (AA 872-972)



[Go to Product page](#)

3 Images

Overview

Quantity:	100 µg
Target:	Exportin 2 (CSE1L)
Binding Specificity:	AA 872-972
Reactivity:	Human
Host:	Mouse
Clonality:	Monoclonal
Conjugate:	This Exportin 2 antibody is un-conjugated
Application:	Western Blotting (WB), ELISA, Immunofluorescence (IF)

Product Details

Immunogen:	CSE1L (NP_001307, 872 a.a. ~ 972 a.a) partial recombinant protein with GST tag. MW of the GST tag alone is 26 KDa. Type of Immunogen: Recombinant protein
Clone:	3D8
Isotype:	IgG
Purification:	Purified from ascites by Protein A

Target Details

Target:	Exportin 2 (CSE1L)
Alternative Name:	CSE1L (CSE1L Products)

Target Details

Background:	Name/Gene ID: CSE1L Synonyms: CSE1L, CAS, CSE1, Exp2, Importin-alpha re-exporter, Exportin-2, XPO2
Gene ID:	1434
NCBI Accession:	NP_001307
UniProt:	P55060
Pathways:	Protein targeting to Nucleus

Application Details

Application Notes:	Approved: ELISA, IF (10 µg/mL), WB Usage: Western Blot (Cell lysate) - positive control HeLa NE. Immunofluorescence (10 µg/mL) - positive control HeLa cells. Sandwich ELISA (Recombinant protein). Not recommended for: IHC-P
Comment:	Target Species of Antibody: Human
Restrictions:	For Research Use only

Handling

Format:	Liquid
Concentration:	Lot specific
Buffer:	PBS, pH 7.4
Handling Advice:	Aliquot to Avoid freeze/thaw cycles.
Storage:	-20 °C
Storage Comment:	Store at -20°C. Aliquot to avoid freeze/thaw cycles.

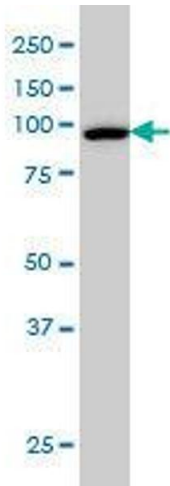


Image 1.

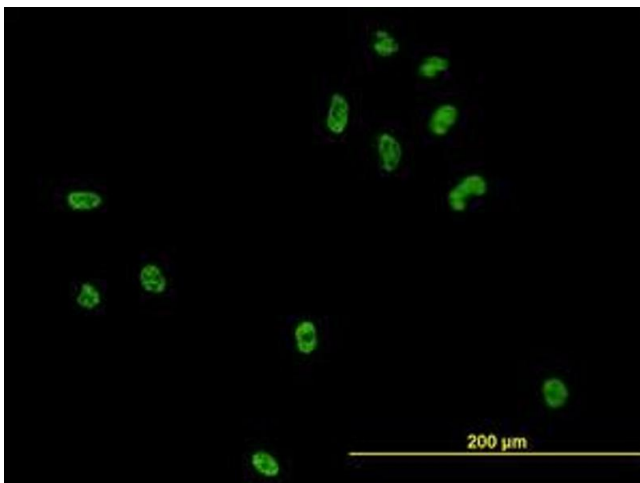


Image 2.

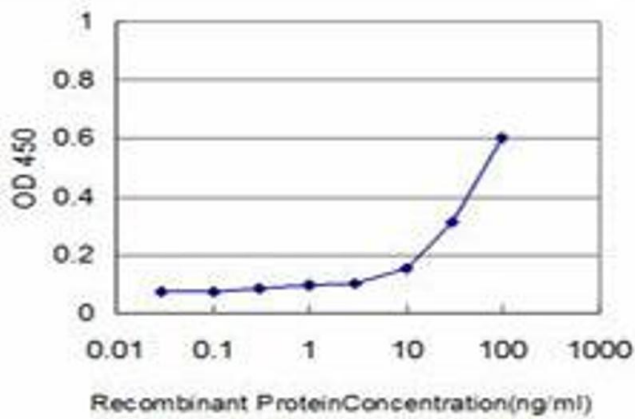


Image 3.