



[Go to Product page](#)

Datasheet for ABIN466089
anti-SDHC antibody (AA 1-170)

1 Image

Overview

| | |
|----------------------|---|
| Quantity: | 100 µg |
| Target: | SDHC |
| Binding Specificity: | AA 1-170 |
| Reactivity: | Human |
| Host: | Mouse |
| Clonality: | Monoclonal |
| Conjugate: | This SDHC antibody is un-conjugated |
| Application: | Western Blotting (WB), ELISA, Immunohistochemistry (IHC), Immunohistochemistry (Paraffin-embedded Sections) (IHC (p)) |

Product Details

| | |
|---------------|--|
| Immunogen: | SDHC (AAH33626, 1 a.a. ~ 170 a.a) full length recombinant protein with GST tag. MW of the GST tag alone is 26 KDa. Type of Immunogen: Recombinant protein |
| Clone: | 3E2 |
| Isotype: | IgG2a kappa |
| Purification: | Purified from ascites by Protein A |

Target Details

| | |
|---------|------|
| Target: | SDHC |
|---------|------|

Target Details

Alternative Name: [SDHC \(SDHC Products\)](#)

Background: Name/Gene ID: SDHC

Synonyms: SDHC, CYB560, CYBL, QPs-1, SDH3, PGL3, QPS1

Gene ID: 6391

UniProt: [Q99643](#)

Application Details

Application Notes: Approved: ELISA, IHC, IHC-P (3 µg/mL), WB

Usage: Immunohistochemistry (Formalin/PFA-fixed paraffin-embedded sections, 3 µg/mL) - positive control human skeletal muscle.

Comment: Target Species of Antibody: Human

Restrictions: For Research Use only

Handling

Format: Liquid

Concentration: Lot specific

Buffer: PBS, pH 7.4

Handling Advice: Aliquot to Avoid freeze/thaw cycles.

Storage: -20 °C

Storage Comment: Store at -20°C. Aliquot to avoid freeze/thaw cycles.

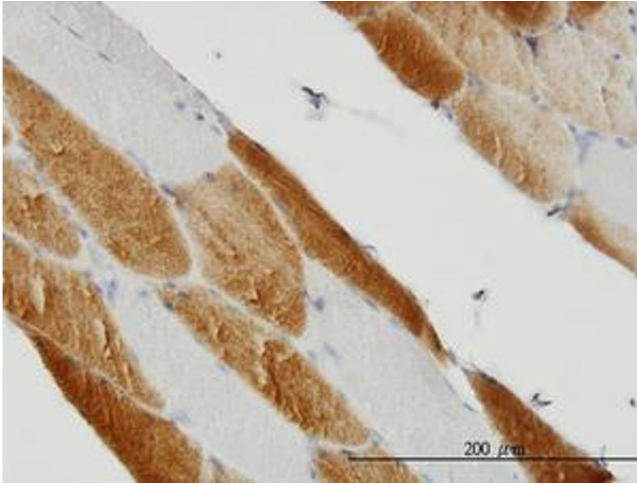


Image 1.