



[Go to Product page](#)

Datasheet for ABIN466193
anti-CCRN4L antibody (AA 64-153)

1 Image

Overview

Quantity:	100 µg
Target:	CCRN4L
Binding Specificity:	AA 64-153
Reactivity:	Human
Host:	Mouse
Clonality:	Monoclonal
Conjugate:	This CCRN4L antibody is un-conjugated
Application:	Western Blotting (WB), ELISA

Product Details

Immunogen:	CCRN4L (NP_036250, 64 a.a. ~ 153 a.a) partial recombinant protein with GST tag. MW of the GST tag alone is 26 KDa. Type of Immunogen: Recombinant protein
Clone:	3E8
Isotype:	IgG2a kappa
Purification:	Purified from ascites by Protein A

Target Details

Target:	CCRN4L
Alternative Name:	CCRN4L / Nocturnin (CCRN4L Products)

Target Details

Background:	Name/Gene ID: CCRN4L Synonyms: CCRN4L, CCR4 protein homolog, CCR4L, NOC, Nocturnin
Gene ID:	25819
NCBI Accession:	NP_036250
UniProt:	Q9UK39
Pathways:	Ribonucleoprotein Complex Subunit Organization

Application Details

Application Notes:	Approved: ELISA, WB Usage: Immunohistochemistry (Formalin/PFA-fixed paraffin-embedded sections, 3 µg/mL) - positive control human placenta. Not recommended for: IHC-P
Comment:	Target Species of Antibody: Human
Restrictions:	For Research Use only

Handling

Format:	Liquid
Concentration:	Lot specific
Buffer:	PBS, pH 7.4
Handling Advice:	Aliquot to Avoid freeze/thaw cycles.
Storage:	-20 °C
Storage Comment:	Store at -20°C. Aliquot to avoid freeze/thaw cycles.

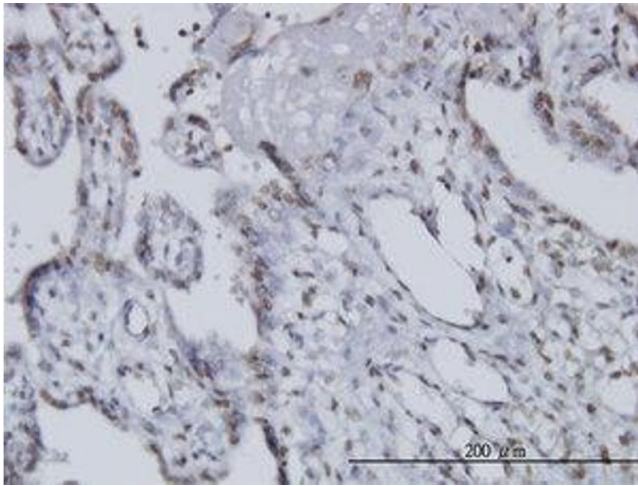


Image 1.