



[Go to Product page](#)

Datasheet for ABIN466200  
**anti-EML4 antibody (AA 1-63)**

1 Image

### Overview

Quantity:	100 µg
Target:	EML4
Binding Specificity:	AA 1-63
Reactivity:	Human
Host:	Mouse
Clonality:	Monoclonal
Application:	Western Blotting (WB), ELISA

### Product Details

Immunogen:	EML4 (AAH08685, 1 a.a. ~ 63 a.a) full length recombinant protein with GST tag. MW of the GST tag alone is 26 KDa.  Type of Immunogen: Recombinant protein
Clone:	3C10
Isotype:	IgG1 kappa
Purification:	Purified from ascites by Protein A

### Target Details

Target:	EML4
Alternative Name:	EML4 ( <a href="#">EML4 Products</a> )
Background:	Name/Gene ID: EML4

## Target Details

---

Synonyms: EML4, C2orf2, EMAP-4, EMAPL4, Ropp 120, ELP120, ROPP120

Gene ID: 27436

UniProt: [Q9HC35](#)

## Application Details

---

Application Notes: Approved: ELISA, WB

Usage: Immunohistochemistry (Formalin/PFA-fixed paraffin-embedded sections, 10 µg/mL) - positive control human prostate cancer.

Not recommended for: IHC-P

Comment: Target Species of Antibody: Human

Restrictions: For Research Use only

## Handling

---

Format: Liquid

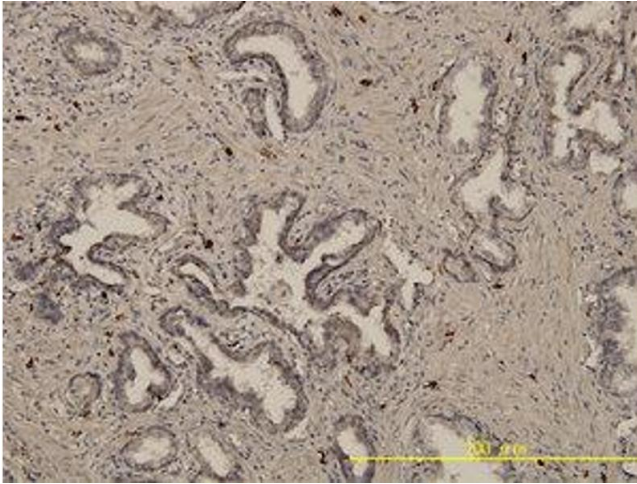
Concentration: Lot specific

Buffer: PBS, pH 7.4

Handling Advice: Aliquot to Avoid freeze/thaw cycles.

Storage: -20 °C

Storage Comment: Store at -20°C. Aliquot to avoid freeze/thaw cycles.



**Image 1.**