



[Go to Product page](#)

Datasheet for ABIN467371
anti-ADORA1 antibody (AA 162-227)

2 Images

Overview

Quantity:	100 µL
Target:	ADORA1
Binding Specificity:	AA 162-227
Reactivity:	Human, Rat, Mouse, Dog, Cow
Host:	Rabbit
Clonality:	Polyclonal
Conjugate:	This ADORA1 antibody is un-conjugated
Application:	Western Blotting (WB)

Product Details

Immunogen:	Synthetic peptide containing a sequence corresponding to a region within amino acids 162 and 227 of Adenosine receptor A1. Type of Immunogen: Synthetic peptide
Specificity:	Human and mouse Adenosine receptor A1. Predicted cross-reactivity based on amino acid sequence homology: mouse (100 %), rat (100 %), bovine (100 %), dogs (100 %).
Purification:	Immunoaffinity purified

Target Details

Target:	ADORA1
Alternative Name:	ADORA1 / Adenosine A1 Receptor (ADORA1 Products)

Target Details

Background: Name/Gene ID: ADORA1
Subfamily: Adenosine
Family: GPCR

Synonyms: ADORA1, A1 adenosine receptor, A1ar, Adenosine A1 receptor, Adenosine receptor A1, ADO-A1 receptor, RDC7

Gene ID: 134

UniProt: [P30542](#)

Pathways: [EGFR Signaling Pathway](#), [Negative Regulation of Hormone Secretion](#), [Synaptic Membrane](#)

Application Details

Application Notes: Approved: WB (1:500 - 1:3000)

Not recommended for: IHC-P

Comment: Target Species of Antibody: Human

Restrictions: For Research Use only

Handling

Format: Liquid

Concentration: Lot specific

Buffer: PBS, pH 7, 1 % BSA, 20 % Glycerol, 0.01 % Thimerosal

Preservative: Thimerosal (Merthiolate)

Precaution of Use: This product contains Thimerosal (Merthiolate): a POISONOUS AND HAZARDOUS SUBSTANCE which should be handled by trained staff only.

Handling Advice: Minimize freezing and thawing.

Storage: -20 °C

Storage Comment: Aliquot and store at -20°C. Avoid freeze-thaw cycles.

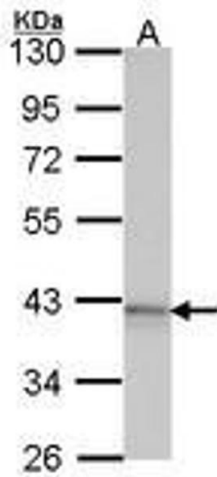


Image 1.

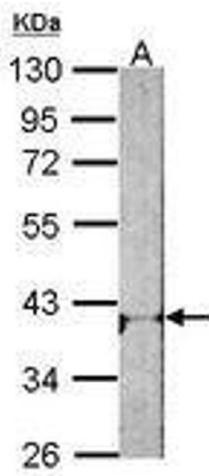


Image 2.