

Datasheet for ABIN467399

anti-Dopamine Receptor d1 antibody (AA 347-411)[Go to Product page](#)**1** Image

Overview

Quantity:	100 µL
Target:	Dopamine Receptor d1 (DRD1)
Binding Specificity:	AA 347-411
Reactivity:	Human
Host:	Rabbit
Clonality:	Polyclonal
Conjugate:	This Dopamine Receptor d1 antibody is un-conjugated
Application:	Western Blotting (WB)

Product Details

Immunogen:	Synthetic peptide containing a sequence corresponding to a region within amino acids 347 and 411 of dopamine receptor D1. Type of Immunogen: Synthetic peptide
Specificity:	Human Dopamine receptor D1.
Purification:	Protein A purified

Target Details

Target:	Dopamine Receptor d1 (DRD1)
Alternative Name:	DRD1 / Dopamine Receptor D1 (DRD1 Products)
Background:	Name/Gene ID: DRD1

Target Details

Subfamily: Dopamine

Family: GPCR

Synonyms: DRD1, D(1A) dopamine receptor, D1a dopamine receptor, Dopamine d-1 receptor, Dopamine receptor d1a, DRD1A, DADR, Dopamine d1a receptor, Dopamine receptor D1, Dopamine 1 receptor, Dopamine type 1 receptor, D-1 dopamine receptor, D1 dopamine receptor, D1a receptor, Dopamine D1 receptor

Gene ID: 1812

UniProt: [P21728](#)

Pathways: [cAMP Metabolic Process](#), [Inositol Metabolic Process](#), [Protein targeting to Nucleus](#), [Feeding Behaviour](#), [Smooth Muscle Cell Migration](#), [Regulation of long-term Neuronal Synaptic Plasticity](#)

Application Details

Application Notes: Approved: WB (1:500 - 1:3000)

Not recommended for: IHC-P

Comment: Target Species of Antibody: Human

Restrictions: For Research Use only

Handling

Format: Liquid

Concentration: Lot specific

Buffer: PBS, pH 7, 40 % Glycerol, 0.01 % Thimerosal

Preservative: Thimerosal (Merthiolate)

Precaution of Use: This product contains Thimerosal (Merthiolate): a POISONOUS AND HAZARDOUS SUBSTANCE which should be handled by trained staff only.

Handling Advice: Minimize freezing and thawing.

Storage: -20 °C

Storage Comment: Aliquot and store at -20°C. Avoid freeze-thaw cycles.

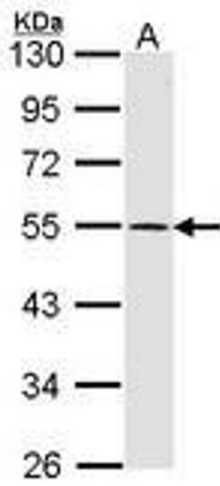


Image 1.