



Datasheet for ABIN467500
anti-CCDC6 antibody (AA 1-232)



[Go to Product page](#)

3 Images

Overview

Quantity:	100 µL
Target:	CCDC6
Binding Specificity:	AA 1-232
Reactivity:	Human
Host:	Rabbit
Clonality:	Polyclonal
Conjugate:	This CCDC6 antibody is un-conjugated
Application:	Western Blotting (WB), Immunohistochemistry (IHC), Immunohistochemistry (Paraffin-embedded Sections) (IHC (p))

Product Details

Immunogen:	Recombinant protein fragment containing a sequence corresponding to a region within amino acids 1 and 232 of coiled-coil domain containing 6. Type of Immunogen: Recombinant protein
Specificity:	Human CCDC6. Predicted cross-reactivity based on amino acid sequence homology: mouse (87 %), zebrafish (97 %).
Purification:	Immunoaffinity purified

Target Details

Target:	CCDC6
---------	-------

Target Details

Alternative Name:	CCDC6 (CCDC6 Products)
Background:	Name/Gene ID: CCDC6 Synonyms: CCDC6, D10S170, H4, Protein H4, TPC, TST1, PTC
Gene ID:	8030
UniProt:	Q16204

Application Details

Application Notes:	Approved: IHC, IHC-P (10 µg/mL), WB (1:500 - 1:3000)
Comment:	Target Species of Antibody: Human
Restrictions:	For Research Use only

Handling

Format:	Liquid
Concentration:	Lot specific
Buffer:	0.1 M Tris-glycine, pH 7, 10 % Glycerol, 0.01 % Thimerosal
Preservative:	Thimerosal (Merthiolate)
Precaution of Use:	This product contains Thimerosal (Merthiolate): a POISONOUS AND HAZARDOUS SUBSTANCE which should be handled by trained staff only.
Handling Advice:	Minimize freezing and thawing.
Storage:	-20 °C
Storage Comment:	Aliquot and store at -20°C. Avoid freeze-thaw cycles.



Image 1.

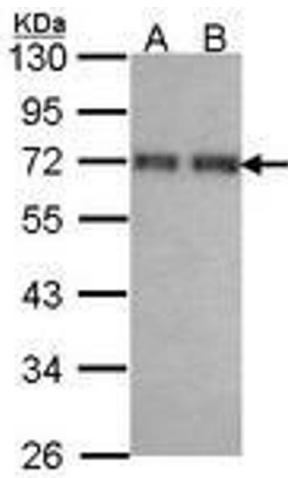
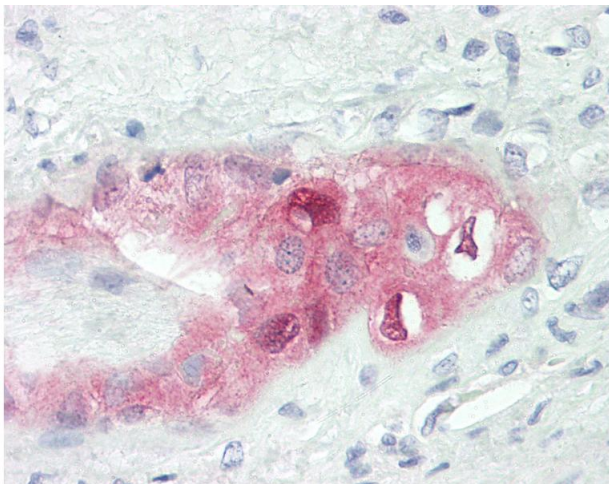


Image 2.



Immunohistochemistry

Image 3. Human Placenta: Formalin-Fixed, Paraffin-Embedded (FFPE)