

Datasheet for ABIN467558  
**anti-CDK7 antibody (AA 1-311)**



[Go to Product page](#)

1 Image

## Overview

Quantity:	100 µL
Target:	CDK7
Binding Specificity:	AA 1-311
Reactivity:	Human
Host:	Rabbit
Clonality:	Polyclonal
Conjugate:	This CDK7 antibody is un-conjugated
Application:	Western Blotting (WB)

## Product Details

Immunogen:	Recombinant protein fragment containing a sequence corresponding to a region within amino acids 1 and 311 of Human Cdk7.  Type of Immunogen: Recombinant protein
Specificity:	Human CDK7. Predicted cross-reactivity based on amino acid sequence homology: mouse (95 %), bovine (96 %), pig (97 %), zebrafish (85 %).
Purification:	Immunoaffinity purified

## Target Details

Target:	CDK7
Alternative Name:	CDK7 ( <a href="#">CDK7 Products</a> )

## Target Details

---

Background:	Name/Gene ID: CDK7 Subfamily: CDC2/CDK Family: Protein Kinase  Synonyms: CDK7, 39 kDa protein kinase, CDK-activating kinase, CDK-activating kinase 1, CDKN7, Cell division protein kinase 7, Cyclin-dependent kinase 7, HCAK, Protein kinase, Mpk-7, Serine/threonine kinase stk1, CAK, CAK1, Crk4, Kinase subunit of CAK, MO15, p39 Mo15, p39MO15, STK1
Gene ID:	1022
UniProt:	<a href="#">P50613</a>
Pathways:	<a href="#">Cell Division Cycle</a> , <a href="#">DNA Damage Repair</a> , <a href="#">Intracellular Steroid Hormone Receptor Signaling Pathway</a> , <a href="#">Mitotic G1-G1/S Phases</a> , <a href="#">M Phase</a>

## Application Details

---

Application Notes:	Approved: WB (1:500 - 1:3000)
Comment:	Target Species of Antibody: Human
Restrictions:	For Research Use only

## Handling

---

Format:	Liquid
Concentration:	Lot specific
Buffer:	0.1 M Tris-glycine, pH 7, 10 % Glycerol, 0.01 % Thimerosal
Preservative:	Thimerosal (Merthiolate)
Precaution of Use:	This product contains Thimerosal (Merthiolate): a POISONOUS AND HAZARDOUS SUBSTANCE which should be handled by trained staff only.
Handling Advice:	Minimize freezing and thawing.
Storage:	-20 °C
Storage Comment:	Aliquot and store at -20°C. Avoid freeze-thaw cycles.

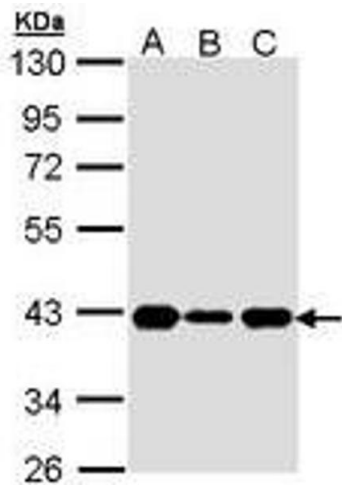


Image 1.