



[Go to Product page](#)

Datasheet for ABIN467562

anti-PTGES2 antibody (AA 106-313)

3 Images

Overview

Quantity:	100 µL
Target:	PTGES2
Binding Specificity:	AA 106-313
Reactivity:	Human
Host:	Rabbit
Clonality:	Polyclonal
Application:	Western Blotting (WB), Immunohistochemistry (IHC), Immunohistochemistry (Paraffin-embedded Sections) (IHC (p))

Product Details

Immunogen:	Recombinant protein fragment containing a sequence corresponding to a region within amino acids 106 and 313 of Human PTGES2. Type of Immunogen: Recombinant protein
Specificity:	Human PTGES2. Predicted cross-reactivity based on amino acid sequence homology: mouse (89 %), rat (88 %), bovine (87 %), dogs (92 %).
Purification:	Immunoaffinity purified

Target Details

Target:	PTGES2
Alternative Name:	PTGES2 (PTGES2 Products)

Target Details

Background:	Name/Gene ID: PTGES2 Synonyms: PTGES2, C9orf15, GATE-binding factor 1, GBF-1, MPGES-2, PGES2, Prostaglandin E synthase 2
Gene ID:	80142
UniProt:	Q9H7Z7
Pathways:	Interferon-gamma Pathway , Cell RedoxHomeostasis , SARS-CoV-2 Protein Interactome

Application Details

Application Notes:	Approved: IHC, IHC-P (10 µg/mL), WB (1:500 - 1:3000)
Comment:	Target Species of Antibody: Human
Restrictions:	For Research Use only

Handling

Format:	Liquid
Concentration:	Lot specific
Buffer:	0.1 M Tris-glycine, pH 7, 10 % Glycerol, 0.01 % Thimerosal
Preservative:	Thimerosal (Merthiolate)
Precaution of Use:	This product contains Thimerosal (Merthiolate): a POISONOUS AND HAZARDOUS SUBSTANCE which should be handled by trained staff only.
Handling Advice:	Minimize freezing and thawing.
Storage:	-20 °C
Storage Comment:	Aliquot and store at -20°C. Avoid freeze-thaw cycles.

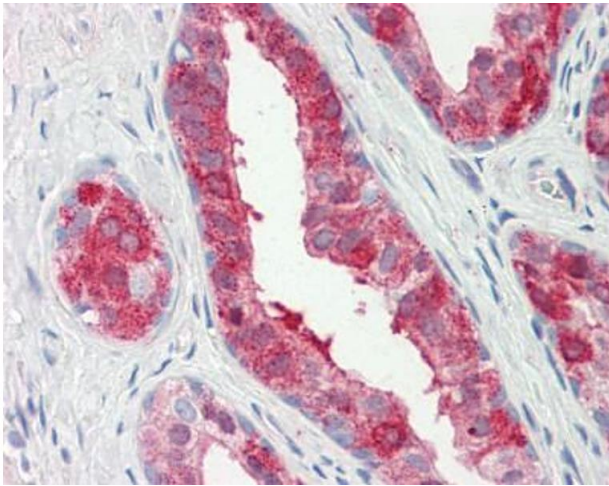


Image 1.

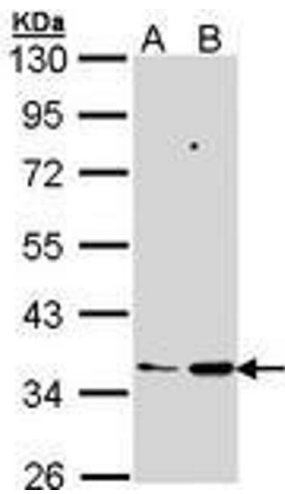
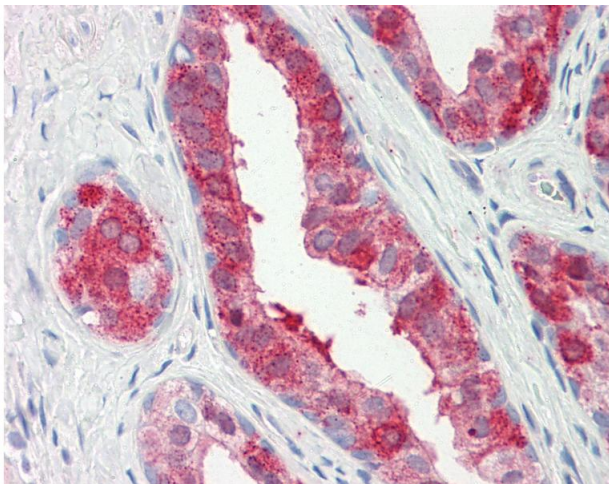


Image 2.



Immunohistochemistry

Image 3. Human Prostate: Formalin-Fixed, Paraffin-Embedded (FFPE)