



[Go to Product page](#)

Datasheet for ABIN467566  
**anti-ACLY antibody (AA 793-1008)**

2 Images

Overview

|                      |                                                                           |
|----------------------|---------------------------------------------------------------------------|
| Quantity:            | 100 µL                                                                    |
| Target:              | ACLY                                                                      |
| Binding Specificity: | AA 793-1008                                                               |
| Reactivity:          | Human                                                                     |
| Host:                | Rabbit                                                                    |
| Clonality:           | Polyclonal                                                                |
| Conjugate:           | This ACLY antibody is un-conjugated                                       |
| Application:         | Western Blotting (WB), Immunofluorescence (IF), Immunocytochemistry (ICC) |

Product Details

|               |                                                                                                                                                                                  |
|---------------|----------------------------------------------------------------------------------------------------------------------------------------------------------------------------------|
| Immunogen:    | Recombinant protein fragment containing a sequence corresponding to a region within amino acids 793 and 1008 of ATP citrate lyase.<br><br>Type of Immunogen: Recombinant protein |
| Specificity:  | Human ATP citrate lyase. Predicted cross-reactivity based on amino acid sequence homology: mouse (97 %), rat (97 %), bovine (99 %), pig (98 %), zebrafish (88 %).                |
| Purification: | Immunoaffinity purified                                                                                                                                                          |

Target Details

|                   |                                                            |
|-------------------|------------------------------------------------------------|
| Target:           | ACLY                                                       |
| Alternative Name: | ACLY / ATP Citrate Lyase ( <a href="#">ACLY Products</a> ) |

## Target Details

---

|             |                                                                                                                                                                                               |
|-------------|-----------------------------------------------------------------------------------------------------------------------------------------------------------------------------------------------|
| Background: | Name/Gene ID: ACLY<br><br>Synonyms: ACLY, ACL, ATP citrate synthase, ATPCL, ATP citrate lyase, ATP-citrate (pro-S)-lyase, CLATP, ATP-citrate synthase, Citrate cleavage enzyme, Citrate Lyase |
| Gene ID:    | 47                                                                                                                                                                                            |
| UniProt:    | <a href="#">P53396</a>                                                                                                                                                                        |
| Pathways:   | <a href="#">Warburg Effect</a>                                                                                                                                                                |

## Application Details

---

|                    |                                                                                                          |
|--------------------|----------------------------------------------------------------------------------------------------------|
| Application Notes: | Approved: ICC (1:100 - 1:200), IF (1:100 - 1:200), WB (1:500 - 1:3000)<br><br>Not recommended for: IHC-P |
| Comment:           | Target Species of Antibody: Human                                                                        |
| Restrictions:      | For Research Use only                                                                                    |

## Handling

---

|                    |                                                                                                                                    |
|--------------------|------------------------------------------------------------------------------------------------------------------------------------|
| Format:            | Liquid                                                                                                                             |
| Concentration:     | Lot specific                                                                                                                       |
| Buffer:            | 0.1 M Tris-glycine, pH 7, 10 % Glycerol, 0.01 % Thimerosal                                                                         |
| Preservative:      | Thimerosal (Merthiolate)                                                                                                           |
| Precaution of Use: | This product contains Thimerosal (Merthiolate): a POISONOUS AND HAZARDOUS SUBSTANCE which should be handled by trained staff only. |
| Handling Advice:   | Minimize freezing and thawing.                                                                                                     |
| Storage:           | -20 °C                                                                                                                             |
| Storage Comment:   | Aliquot and store at -20°C. Avoid freeze-thaw cycles.                                                                              |

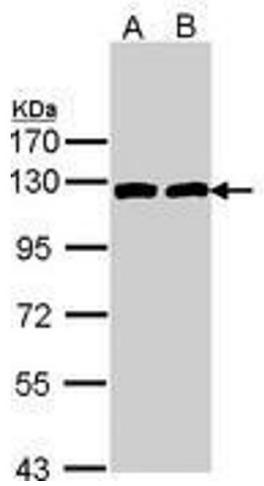


Image 1.

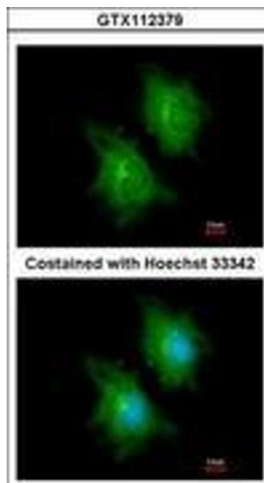


Image 2.