



[Go to Product page](#)

Datasheet for ABIN467591
anti-PIN1 antibody (AA 1-133)

2 Images

Overview

Quantity:	100 µL
Target:	PIN1
Binding Specificity:	AA 1-133
Reactivity:	Human
Host:	Rabbit
Clonality:	Polyclonal
Conjugate:	This PIN1 antibody is un-conjugated
Application:	Western Blotting (WB), Immunofluorescence (IF), Immunocytochemistry (ICC)

Product Details

Immunogen:	Recombinant protein fragment containing a sequence corresponding to a region within amino acids 1 and 133 of PIN1. Type of Immunogen: Recombinant protein
Specificity:	Human PIN1. Predicted cross-reactivity based on amino acid sequence homology: mouse (93 %), rat (95 %), bovine (97 %).
Purification:	Immunoaffinity purified

Target Details

Target:	PIN1
Alternative Name:	PIN1 (PIN1 Products)

Target Details

Background:	Name/Gene ID: PIN1
	Synonyms: PIN1, DOD, PPlase Pin1, Rotamase Pin1
Gene ID:	5300
UniProt:	Q13526

Application Details

Application Notes:	Approved: ICC, IF (1:100 - 1:200), WB (1:500 - 1:3000)
	Not recommended for: IHC-P
Comment:	Target Species of Antibody: Human
Restrictions:	For Research Use only

Handling

Format:	Liquid
Concentration:	Lot specific
Buffer:	0.1 M Tris-glycine, pH 7, 10 % Glycerol, 0.01 % Thimerosal
Preservative:	Thimerosal (Merthiolate)
Precaution of Use:	This product contains Thimerosal (Merthiolate): a POISONOUS AND HAZARDOUS SUBSTANCE which should be handled by trained staff only.
Handling Advice:	Minimize freezing and thawing.
Storage:	-20 °C
Storage Comment:	Aliquot and store at -20°C. Avoid freeze-thaw cycles.

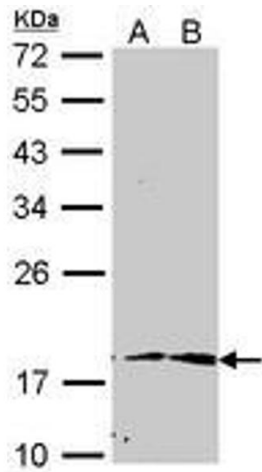


Image 1.

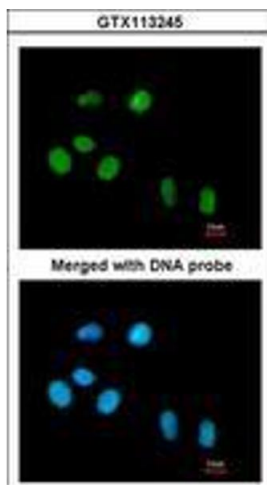


Image 2.