



Datasheet for ABIN474407

anti-Allophycocyanin antibody (Biotin)



[Go to Product page](#)

2 Images

Overview

Quantity:	100 µg
Target:	Allophycocyanin (APC)
Reactivity:	Please inquire
Host:	Mouse
Clonality:	Monoclonal
Conjugate:	This Allophycocyanin antibody is conjugated to Biotin
Application:	Flow Cytometry (FACS)

Product Details

Immunogen:	Allophycocyanin
Clone:	APC-6A2
Isotype:	IgG1
Purification:	Affinity Purified

Target Details

Target:	Allophycocyanin (APC)
Alternative Name:	Allophycocyanin (APC Products)
Target Type:	Chemical

Application Details

Application Notes: Flo

Restrictions: For Research Use only

Handling

Buffer: PBS, pH 7.2, <=0.09 % sodium azide

Preservative: Sodium azide

Precaution of Use: This product contains sodium azide: a POISONOUS AND HAZARDOUS SUBSTANCE which should be handled by trained staff only.

Handling Advice: Do not freeze.

Storage: 4 °C

Storage Comment: Store at 4°C. Do not freeze.

Images

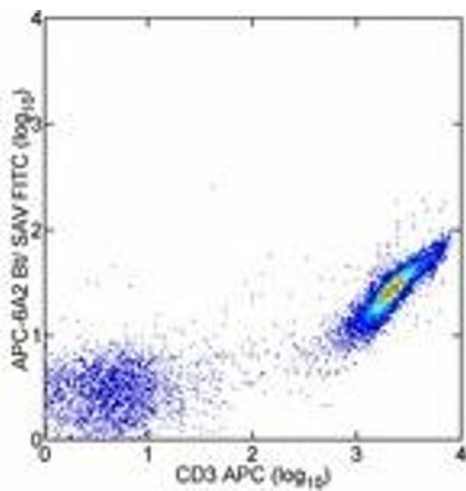


Image 1.

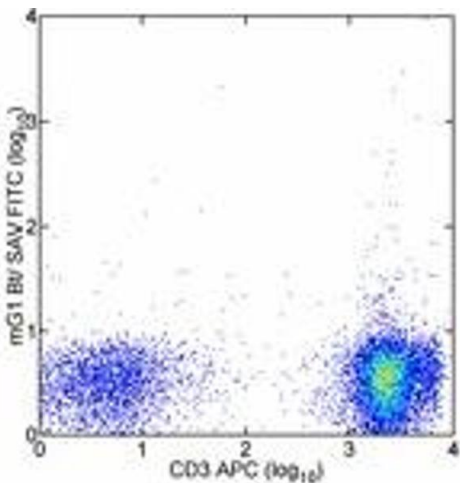


Image 2.